



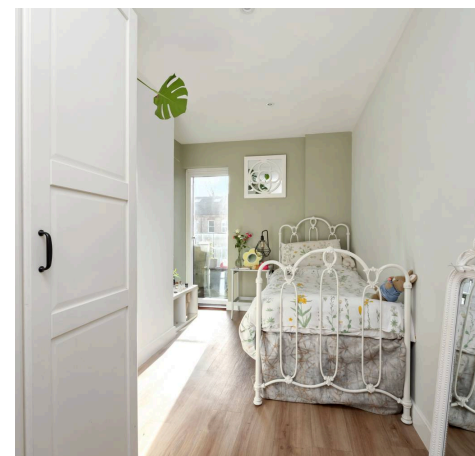
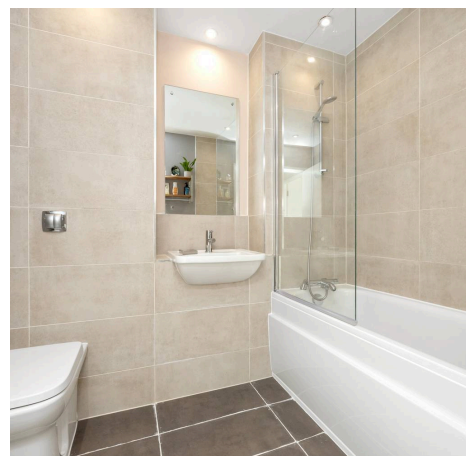
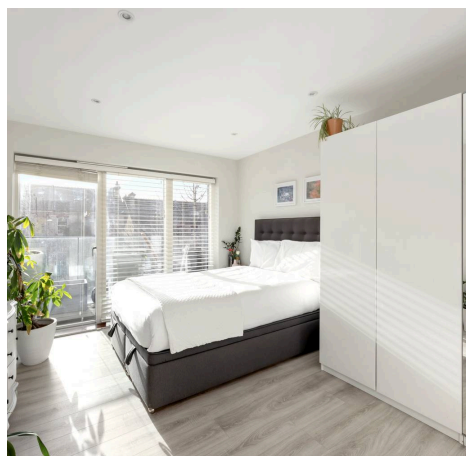
Flat 6, Park House, 1 Hove Park Gardens BN3 6AJ
£2,300 pcm

Flat 6 Park House, 1 Hove Gardens

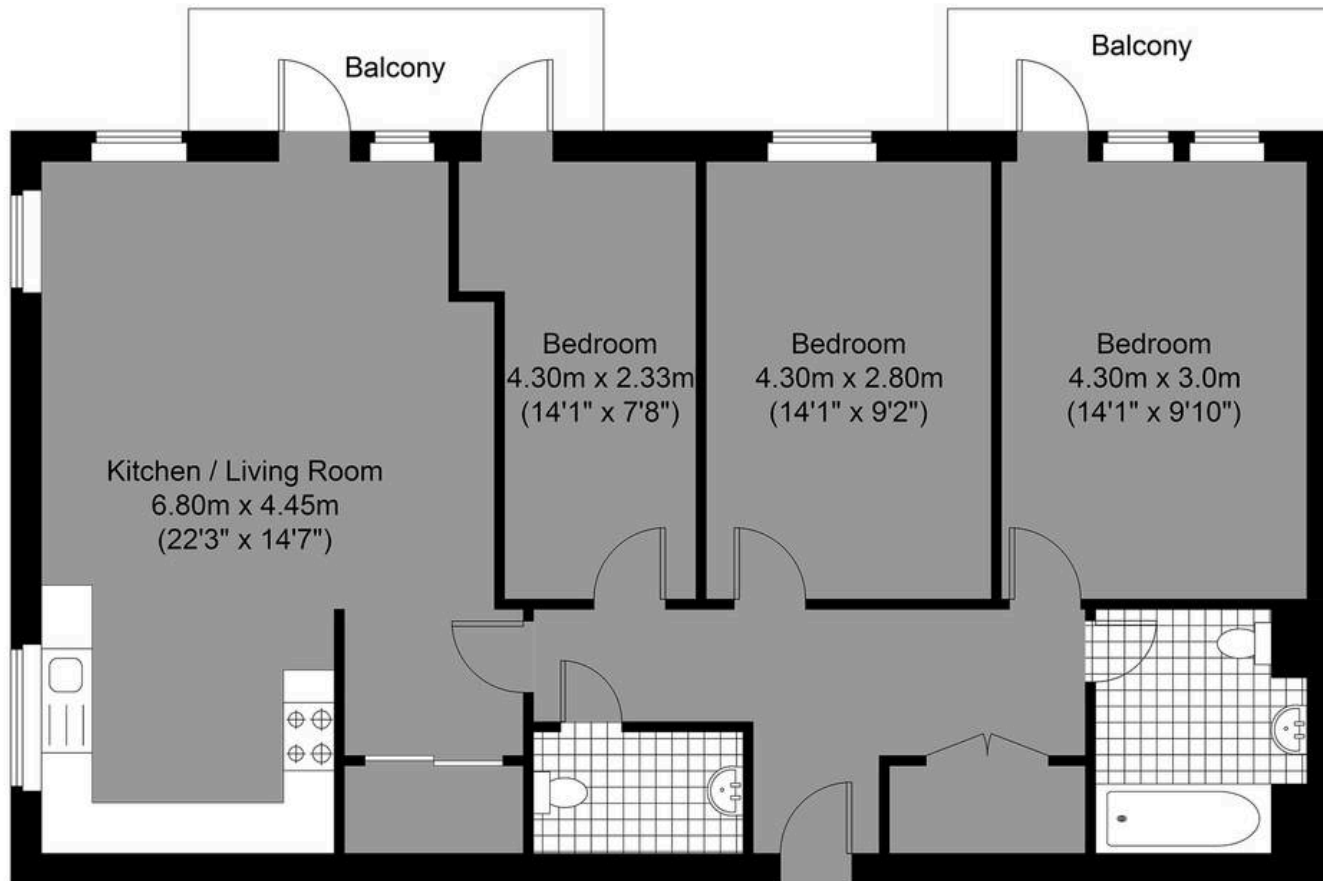
Hove BN3 6AJ

Council Tax band: D

- THREE DOUBLE BEDROOM, MODERN, EXEXECUTIVE APARTMENT
- CLOSE TO HOVE PARK
- HALLWAY WITH CLOAKROOM AND STORAGE CUPBOARD HOUSING WASHING MACHINE & TUMBLE DRIER
- LARGE DOUBLE ASPECT, BRIGHT LIVING ROOM WITH BALCONY
- OPEN PLAN MODERN KITCHEN
- DOUBLE BEDROOM WITH WARDROBES AND DOOR LEADING TO BALCONY
- FURTHER DOUBLE BEDROOM WITH ACCESS TO THE BALCONY
- FURTHER DOUBLE BEDROOM
- MODERN BATHROOM WITH SHOWER OVER THE BATH
- UNDER FLOOR HEATING



Approximate Gross Internal Area = 84.32 sq m / 907.61 sq ft



**MANSELL
McTAGGART**
— Trusted since 1947 —

Hove Park Gardens

First Floor
Approximate Floor Area
907.61 sq ft (84.32 sq m)



Illustration for identification purposed only, measurements are approximate, not to scale.

© Mansell McTaggart



Mansell McTaggart Brighton & Hove

Mansell McTaggart, 138 Old London Road - BN1 8YA

01273 508955

patcham@mansellmctaggart.co.uk

www.mansellmctaggart.co.uk/branch/brighton

