



1 Khartoum Road, London  
£600,000 Share of Freehold



haboodle



**Stylish Two-Bedroom Maisonette with Private Garden | Extended Open-Plan Living | Chain-Free | Prime Tooting Broadway Location**

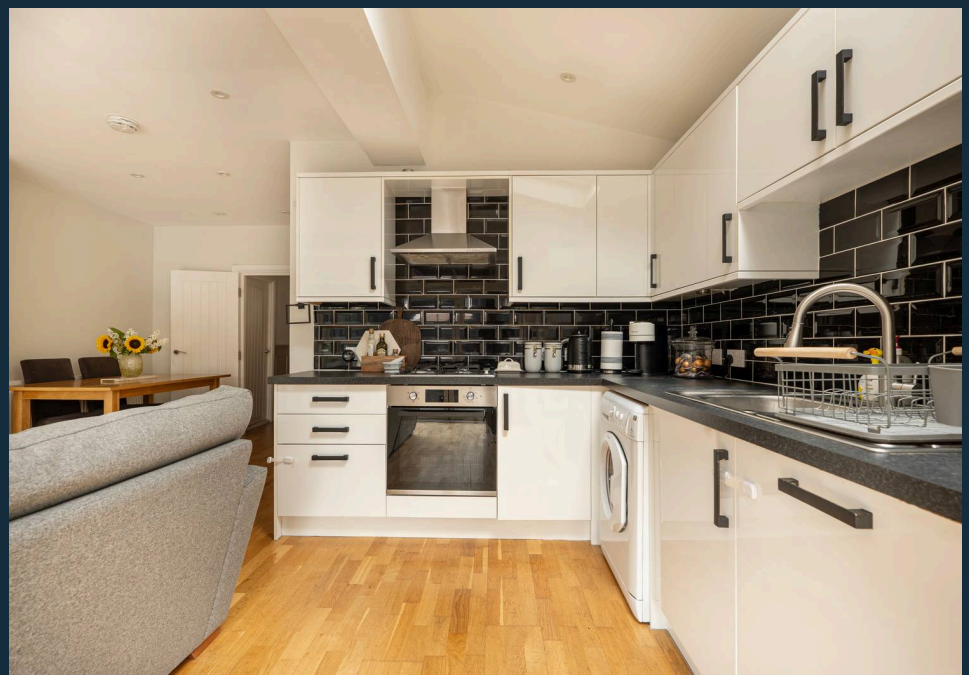
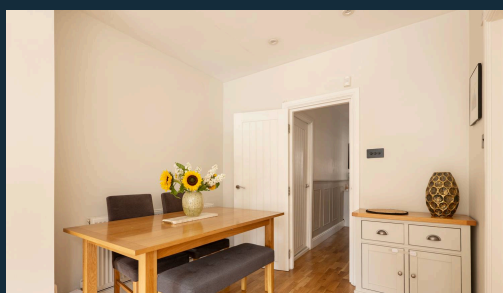
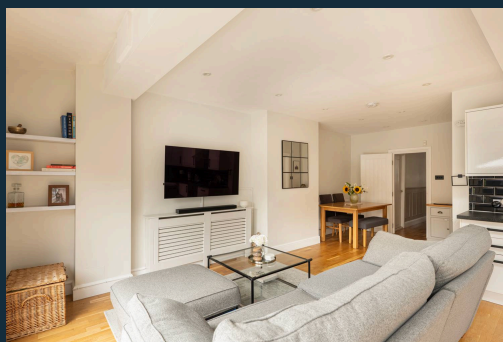
Tucked away on a quiet residential street yet only moments from the heart of Tooting Broadway, this beautifully finished two-bedroom maisonette offers the best of modern living with a rare sense of space and privacy. With its own front door, a light-filled open-plan layout, and a south-facing garden, it's a home that balances style and convenience in one of South London's most vibrant neighbourhoods.

***We have an open day booked for Thursday, 18th September, from 5:00 pm to 7:00 pm, and Saturday, 20th September, from 10:00 am to 11:30 am (please feel free to call us or make any enquiry on any of the platforms, and you will receive a link to book in).***

Inside, the property opens to a welcoming hallway and a bright living space, thoughtfully extended to create a seamless flow from the kitchen to the dining area to the lounge. The kitchen features integrated



- › Two Double Bedroom Ground Floor Masionette
- › Chain Free
- › Share of Freehold
- › Extended Open-plan Kitchen, Dining & Living Space
- › Bi-folding Doors Leading South Facing Private Garden
- › Stylish Three-Piece Bathroom
- › Prime Tooting Broadway Location
- › Short Walk to Tooting Broadway Tube Station
- › Easy Access to Earlsfield Train Station



# Khartoum Road, London, SW17

Approximate Gross Internal Area = 76.3 sq m / 821 sq ft



Illustration for identification purposes only, measurements are approximate, not to scale. Produced by Haboodle Estate Agents (ID1236807)



**haboodle**