



Blue Horizon, 5 Kimberley Grove, La Rue De Haut, St. Lawrence

£1,195,000

BROADLANDS

FINDING YOU A HOME SINCE 1972

Blue Horizon, 5 Kimberley Grove, La Rue De Haut

St. Lawrence, Jersey

- Substantial detached family home
- Superb convenient location
- Four double bedrooms, three bathrooms
- Large open plan kitchen/diner
- Light and bright lounge with feature fireplace
- Double garage and parking for 3 cars
- Good size west facing garden
- Vacant possession and no onward chain
- Sunny balcony and roof terrace
- Sole agent
- Ciara 07797960571 / ciara@broadlandsjersey.com
- Tony 07797726677 / tony@broadlandsjersey.com



Blue Horizon, 5 Kimberley Grove, La Rue De Haut

St. Lawrence, Jersey

Presenting a substantial detached family home situated in a superbly convenient location, this impressive property boasts four double bedrooms and three bathrooms, catering perfectly to the modern family's needs. The large open-plan kitchen/diner offers a fantastic space for entertaining and daily living, while the light and bright lounge showcases a feature fireplace, creating a warm and inviting atmosphere. Both living areas have access onto the west facing balcony overlooking agricultural fields.

Further enhancing the property's appeal are the double garage and parking for three cars, ensuring ample space for vehicles. The residence also benefits from a good-sized west-facing garden, providing a tranquil outdoor retreat. Additionally, a sunny balcony and roof terrace offer ideal spots for enjoying the sunshine. Situated in a central location, whilst being close to the west of the island and St Helier centre.





Living

Good size fully fitted kitchen/diner with integrated appliances and access to the balcony. Spacious cosy living room with feature fireplace and sliding doors outside.

Sleeping

Four double bedrooms, two en suite with fitted wardrobes, all opening onto the patio garden. House bathroom.

Outside

Large well manicured west facing garden with patio. Sunny balcony and spacious roof terrace. Integral double garage and driveway parking for 3 cars.

Services

All mains, oil fired central heating. Underfloor heating in the downstairs bathroom.

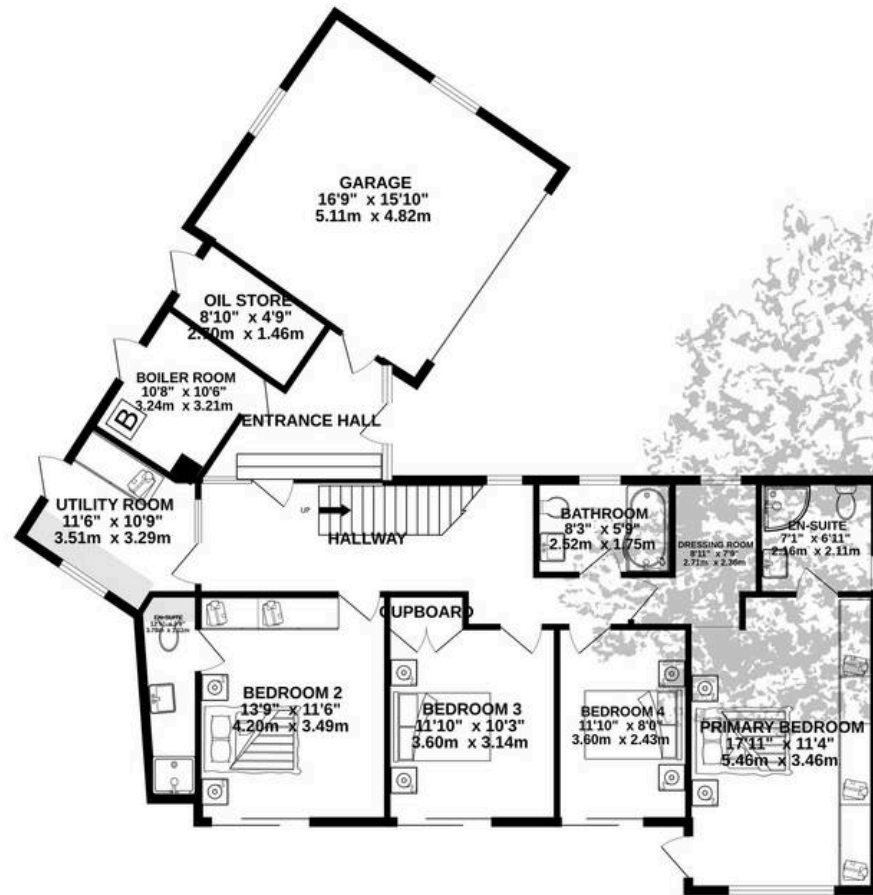




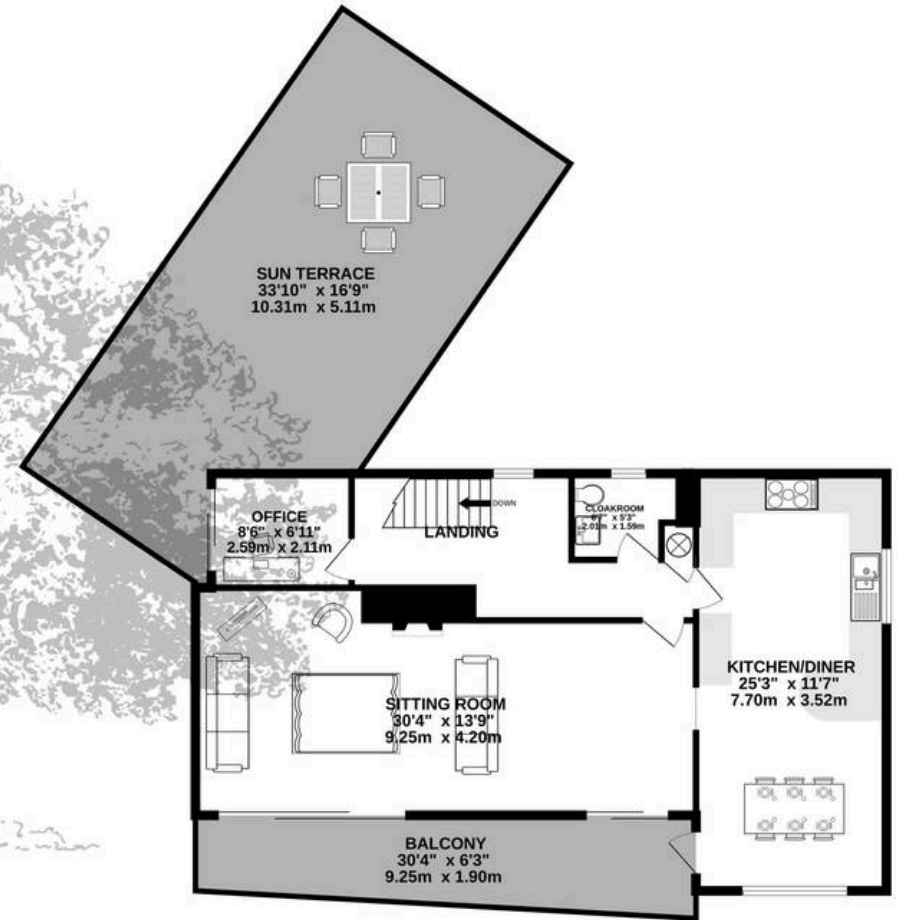




GROUND FLOOR
1446 sq.ft. (134.4 sq.m.) approx.



1ST FLOOR
895 sq.ft. (83.1 sq.m.) approx.



TOTAL FLOOR AREA : 2341 sq.ft. (217.5 sq.m.) approx.

Whilst every attempt has been made to ensure the accuracy of the floorplan contained here, measurements of doors, windows, rooms and any other items are approximate and no responsibility is taken for any error, omission or mis-statement. This plan is for illustrative purposes only and should be used as such by any prospective purchaser. The services, systems and appliances shown have not been tested and no guarantee as to their operability or efficiency can be given.

Made with Metropix ©2025



Broadlands

Broadlands Estates, Library Place - JE2 3NL

01534 880770 • enquiries@broadlandsjersey.com • www.broadlandsjersey.com/

BROADLANDS

FINDING YOU A HOME SINCE 1972