



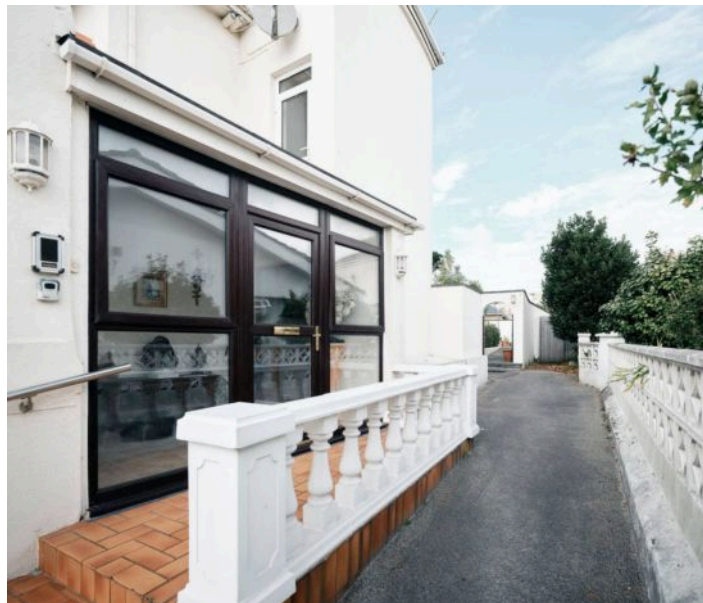
The Penthouse, Ocean View Victoria Avenue
£1,350,000

BROADLANDS
FINDING YOU A HOME SINCE 1972

The Penthouse

Ocean View Victoria Avenue, Jersey

- Unique penthouse arranged over three floors with its own private entrance
- Over 3,000 sq. ft. of accommodation with the feel of a house
- Three bedrooms and two bathrooms and two WC's
- Wraparound balconies offering uninterrupted sea views from every principal room
- Full-size private rooftop garden with panoramic coastal outlooks
- Exclusive swimming pool, sun terrace and barbecue area for this apartment only
- Double garage plus parking for two additional vehicles
- Available immediately
- Contact Angela Binnie at angela@broadlandsjersey.com or 07829 900010
- Sole agent



The Penthouse

Ocean View Victoria Avenue, Jersey

Exceptional Penthouse with Panoramic Sea Views

This unique penthouse apartment, arranged over three floors with its own private entrance, offers the space and feel of a house while enjoying all the benefits of apartment living. Occupying over 3,000 sq. ft. in an exclusive block of just two homes, it is perfectly positioned to capture sweeping views across St Aubin's Bay and Millbrook Park.

The accommodation comprises three generous bedrooms, two bathrooms, and bright, open-plan living areas with direct access to extensive wraparound balconies. Every principal room enjoys uninterrupted sea views, with the added luxury of a spectacular rooftop garden the size of the entire apartment—an extraordinary private retreat ideal for entertaining or relaxation.

At the rear, the penthouse boasts its own private swimming pool, sun terrace, and barbecue area, creating a true resort-style lifestyle that can be enjoyed in complete seclusion. Practical features include a double garage and additional parking for two vehicles, as well as excellent access to the beach, town centre, and nearby amenities, all just a short stroll away.

Available immediately, this exceptional coastal home combines scale, privacy, and luxury in a prime Jersey location.





Living

The living space is arranged to take full advantage of the coastal setting, with large open-plan reception areas that are flooded with natural light and flow directly onto the extensive wraparound balconies. Offering plenty of room for both formal dining and relaxed family living.

Sleeping

The bedroom accommodation has three bedrooms including two doubles (two en-suite) and single or study, each designed to make the most of the stunning outlook.

Services

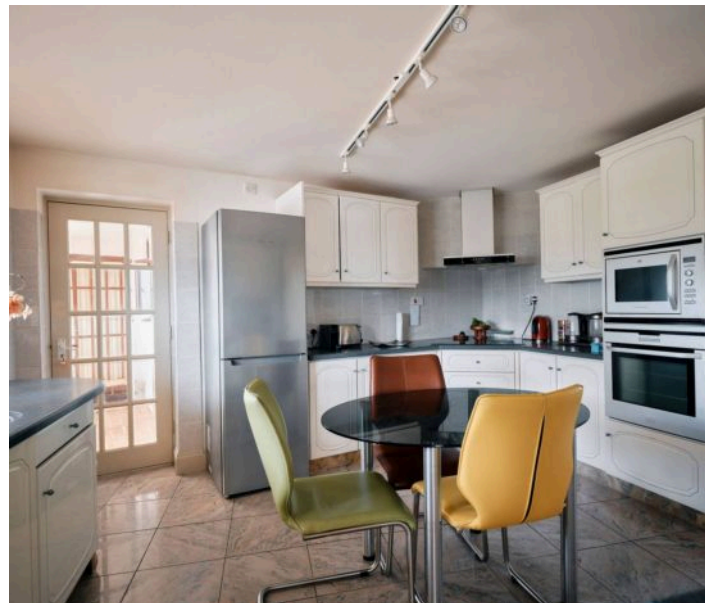
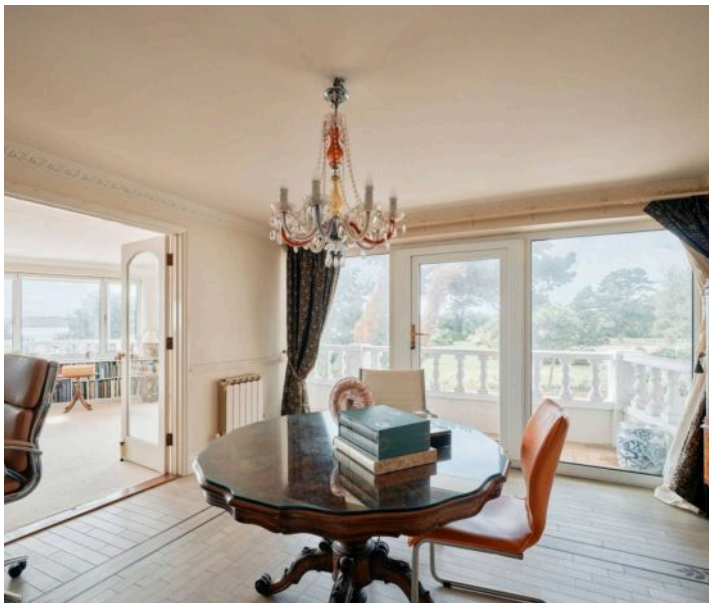
Tenure is Share Transfer. Oil Fired Central Heating. Mains drains and water.

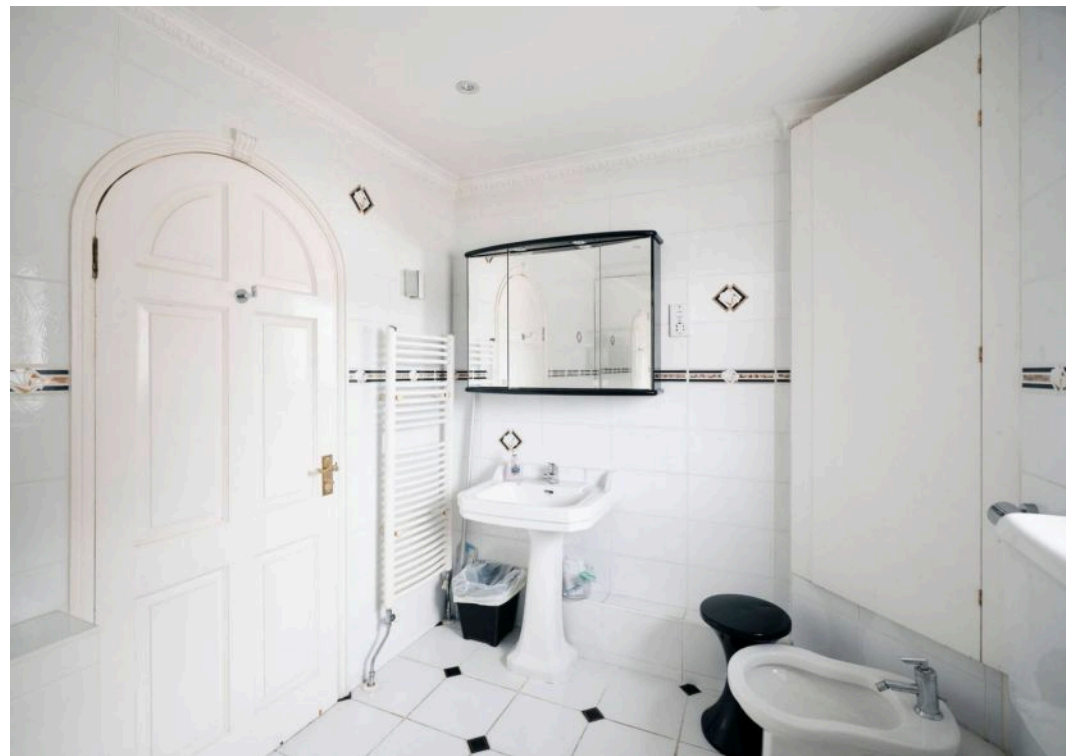
Parking

Double garage and parking for 2 vehicles.

Tenure - Share Transfer

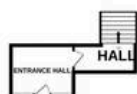
Contact Angela Binnie on angela@broadlandsjersey.com or 07829 900010



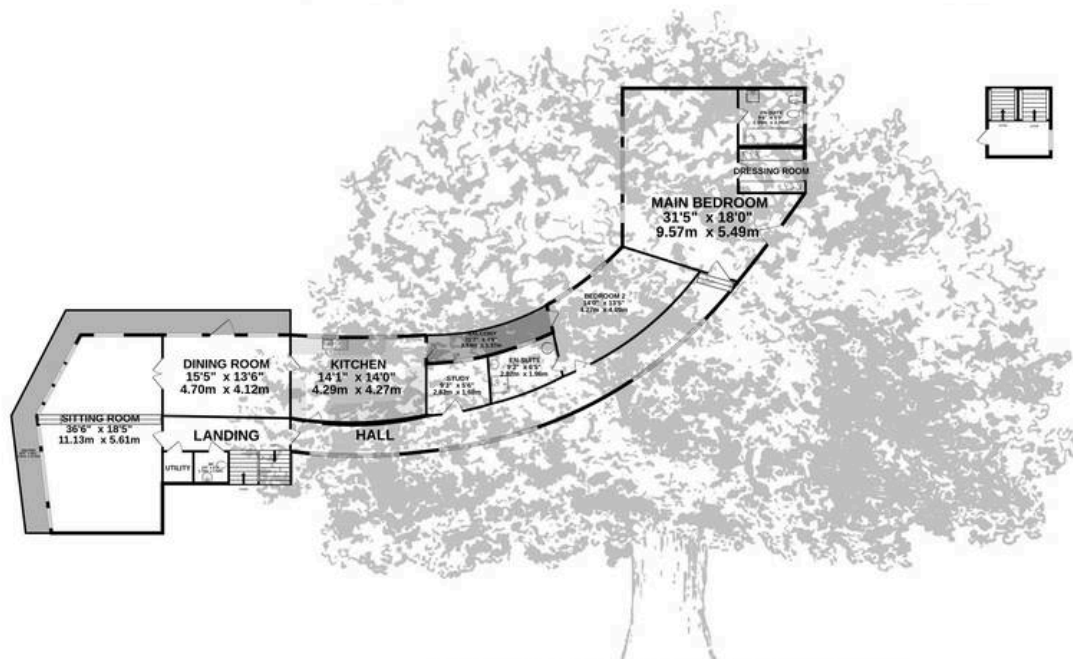




GROUND FLOOR
104 sq.m. (1117 sq.ft.) approx.



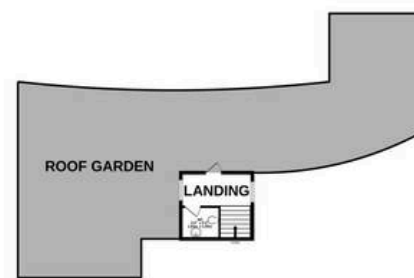
1ST FLOOR
204 sq.m. (2197 sq.ft.) approx.



2ND FLOOR
101 sq.m. (1087 sq.ft.) approx.



3RD FLOOR
8 sq.m. (86 sq.ft.) approx.



TOTAL FLOOR AREA : 3616 sq.ft. (335.9 sq.m.) approx.

Whilst every attempt has been made to ensure the accuracy of the floorplan contained here, measurements of doors, windows, rooms and any other items are approximate and no responsibility is taken for any error, omission or mis-statement. This plan is for illustrative purposes only and should be used as such by any prospective purchaser. The services, systems and appliances shown have not been tested and no guarantee as to their operability or efficiency can be given.

Made with Metropix ©2025



Broadlands

Broadlands Estates, Library Place - JE2 3NL

01534 880770 • enquiries@broadlandsjersey.com • www.broadlandsjersey.com/

BROADLANDS

FINDING YOU A HOME SINCE 1972