



HARRISON
Sales &
Lettings
HARDEN

Evenlode Road, Moreton-In-Marsh



We are pleased to welcome to the market this spacious four bedroom detached house with countryside views.

The property features a hallway with storage space which is used as a utility/boiler room, downstairs toilet/shower room, sitting room, open plan dining/snug/kitchen, three double bedrooms on the first floor, one complete with an ensuite shower room and main bathroom. On the top floor there is an additional double bedroom with ensuite shower room. Benefits include modern décor throughout, double glazing, central heating with underfloor heating, integrated dishwasher, water softener and loft space.

Step outside to find a low-maintenance, south west facing garden, which is well presented and maintained. There is a rear gate which leads to two allocated parking spaces, and there is an additional parking space at the front of the house on the driveway. The property also benefits from solar panels fitted at the rear of the property.

EPC: B

Council Tax Band: D

Tenure: Freehold

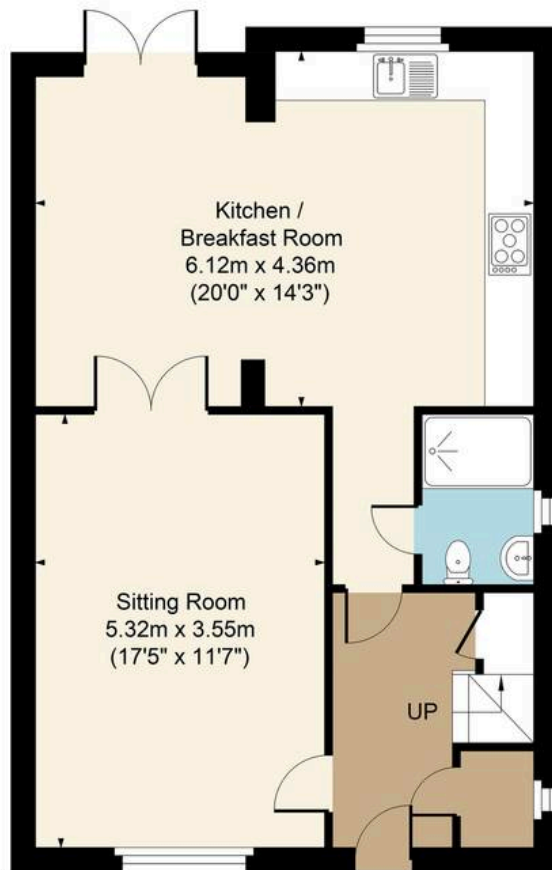
What3Words: ///blaring.array.pacifist

Moreton in Marsh has been a prosperous market town for many years - and the commercial tradition continues today, with weekly Tuesday markets and a thriving high street that provides residents with a wide range of amenities. The town enjoys excellent public transport links including a direct rail link to London Paddington (via Oxford), and amenities include two large supermarkets, two smaller food stores and a variety of tearooms, cafes, shops, and pubs. Moreton in Marsh has a local primary school in the town, and is within the catchment area for two secondary schools.

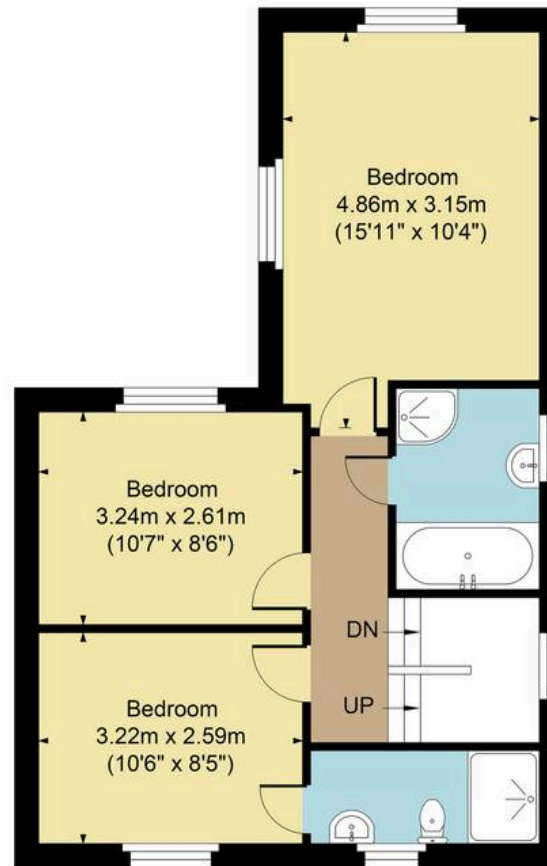




Main House Approx. Gross Internal Area:- 129.94 sq.m. 1399 sq.ft.



Ground Floor



First Floor



Second Floor

FOR ILLUSTRATIVE PURPOSES ONLY-NOT TO SCALE
The position & size of doors, windows, appliances and other features are approximate only.
□ □ Denotes restricted head height
www.dmlphotography.co.uk