



27 Southdown Close, Haywards Heath, West Sussex RH16 4JR

Guide Price £375,000-£400,000



**MANSELL
McTAGGART**
Trusted since 1947



A 3 bedroom semi-detached house requiring general modernisation throughout, occupying a large plot within a cul-de-sac on the southern side of town within walking distance of the town centre. For sale with no onward chain.

- Family home in need of complete modernisation
- Tremendous potential for extending STPP
- Fabulous plot with 100+' x 35' rear garden
- Driveway, garage and large front garden
- Double aspect lounge/dining room with fireplace
- 3 generous bedrooms - upstairs bathroom
- Warden Park Secondary School catchment area
- Walking distance of several primary schools
- Close to Ashenground Woods
- 15 minute walk to the hospital
- EPC rating: D - Council Tax Band: D

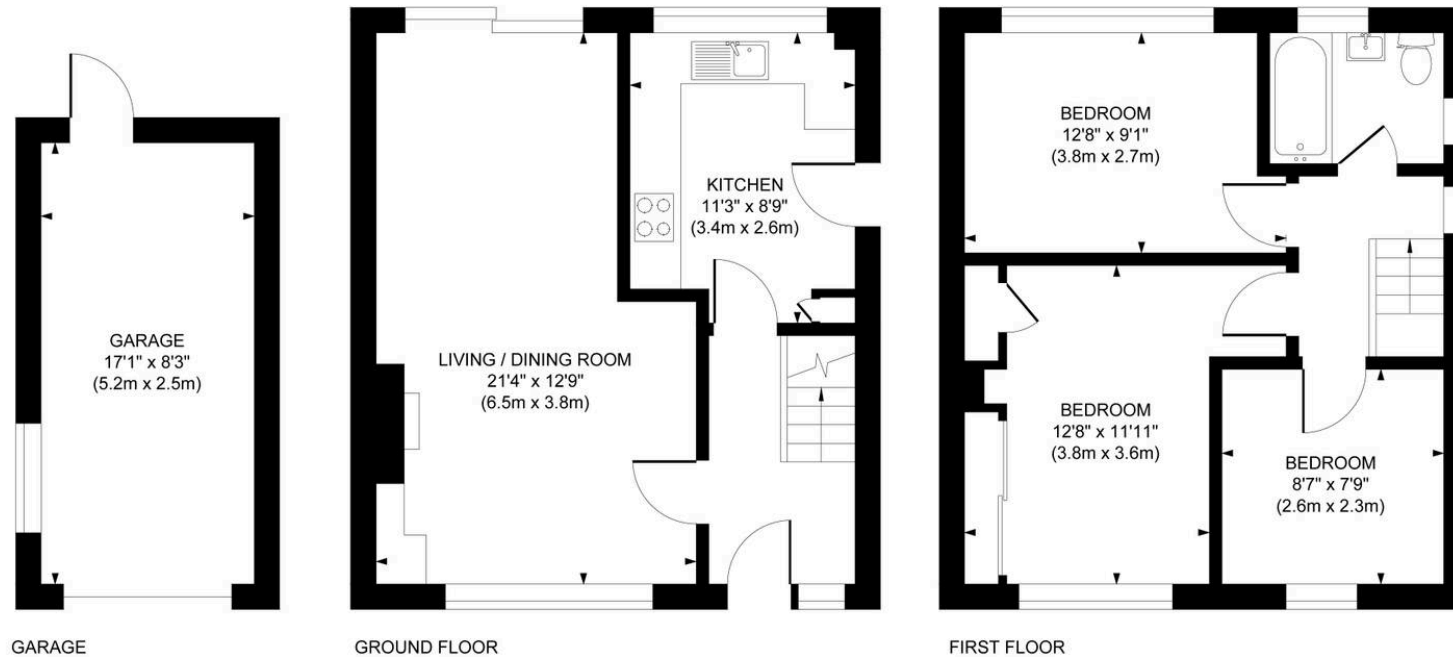


Southdown Close is situated off Vale Road which is located on the southern side of town close to the Vale Surgery. A bus service runs along Vale Road linking with the hospital, town centre and railway station.

The town has an extensive range of shops, restaurants, cafés and bars. Schools are well represented and there are several primary schools within walking distance and children from this side of town generally fall into the catchment area for the Warden Park Secondary Academy School in neighbouring Cuckfield. The town also has a 6th form college, leisure centre and numerous parks.



Approximate Gross Internal Area
 Main House 793 sq. ft / 73.70 sq. m
 Garage 141 sq. ft / 13.12 sq. m
 Total 935 sq. ft / 86.82 sq. m



This plan is for layout guidance only. Not drawn to scale unless stated. Whilst every care is taken in the preparation of this plan, please check all dimensions, shapes and compass bearings before making decisions reliant upon them.

Mansell McTaggart Haywards Heath
 Mansell McTaggart Estate Agents, 7 Muster Green South – RH16 4AP
 01444 456431

hh@mansellmctaggart.co.uk

www.mansellmctaggart.co.uk/branch/haywardsheath

Consumer Protection from Unfair Trading Regulations 2008 We have not tested any apparatus, equipment, fixtures, fittings or services and so cannot verify that they are in working order or fit for purpose. You are advised to obtain verification from your solicitor or surveyor. References to the tenure of a property are based on information supplied by the seller. We have not had sight of the title documents and a buyer is advised to obtain verification from their solicitor. Items shown in photographs are not included unless specifically mentioned within the sales particulars, but may be available by separate negotiation.