



4 Westborough Drive, Halifax
£130,000

boococks
ESTATE AGENTS & LETTINGS



4 Westborough Drive

Halifax, Halifax

****Renovation Project****

****Traditional semi****

****Fabulous position with far reaching views from first floor****

****Some original stained glass leaded windows****

****Good sized family accommodation****

****Potential to extend to the side, subject to planning and building regulations approvals****

This really is a great opportunity for the right buyer, a complete renovation project which, finished to your own specification, could see you with the house you've always dreamed of. A traditional semi-detached house which retains some of the original stained glass leaded windows and offers good sized family accommodation. The gardens are positioned mainly to the side, but also to the front, whilst to the rear is a garden which is shared with the neighbouring home. The side garden provides plenty of scope to extend, subject to the required consents, and the views at the rear, particularly from the rear bedroom windows, is sure to be one of the most appealing features for many.

Council tax band: C

Tenure: Freehold

ENTRANCE HALL

With a useful, cellar type storage cupboard extending under the stairs.

LOUNGE

Dimensions: 4.26 x 4.55 max. The measurement goes into the large square bay. Please see the floor plan. With fireplace and fire.

DINING ROOM

Dimensions: 4.26 x 3.54. With a serving hatch through to the kitchen and a fireplace.

KITCHEN

Dimensions: 2.42 x 2.11. With older style units.

STAIRS and LANDING

With a beautiful stained glass, leaded window.

BEDROOM ONE

Dimensions: 4.23 x 3.59. With wardrobes fitted beside the chimney breast and a fireplace.

BEDROOM TWO

Dimensions: 3.56 x 3.52. With wardrobes fitted beside the chimney breast and a fireplace.

BEDROOM THREE

Dimensions: 2.17 x 2.13.

BATHROOM

With an older, two piece suite of wash basin and bath.

WC

With a low flush WC.

EXTRA INFORMATION

Tenure: Freehold Council Tax Band: C Please note that fires have not been tested, and we assume they are not working.





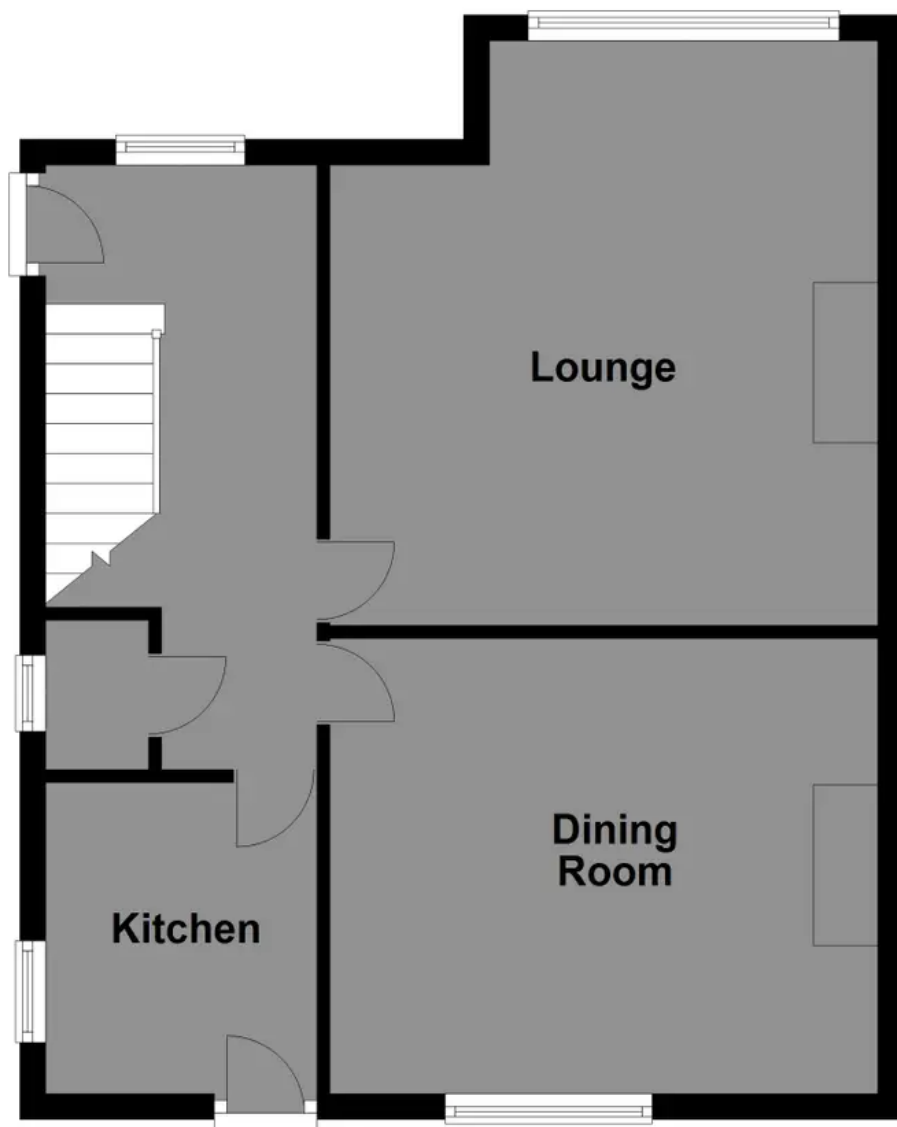


GARDEN

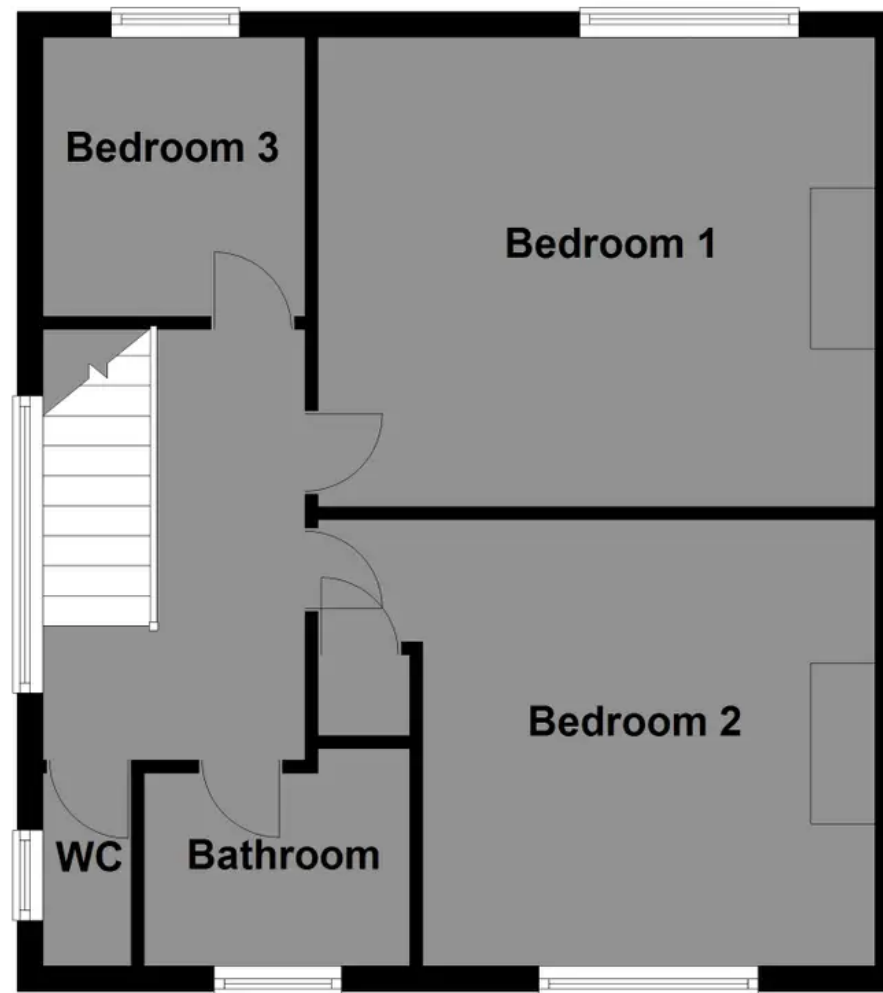
There is a garden to the front and to the side, allowing for room to extend, subject to planning consent and building regulations approval. The garden at the rear is shared with the neighbouring house, and there is a fabulous, far reaching view, particularly from the upper floor windows.



Ground Floor



First Floor



Floor plans are indicative and are not drawn to scale.
Plan produced using PlanUp.



Boococks

Boococks Estate Agents, 3 Fountain Street - HX1 1LW

01422 386376

agency@wilkinsonwoodward.co.uk

<https://www.boococks.co.uk/>

 **boococks**
ESTATE AGENTS & LETTINGS