



21 Le Clos Vaze St. Johns Road, St. Helier
£655,000

BROADLANDS
FINDING YOU A HOME SINCE 1972

21 Le Clos Vaze St. Johns Road

St. Helier, Jersey

- Superbly presented First Time Buyers House
- 3 double bedrooms 2 bathrooms
- Garage and one parking space and ample visitor parking.
- Eat in kitchen
- Lounge with garden access
- Convenient location for Town and schools
- Study/Office area
- Semi detached and light and airy throughout
- Call Doug on 07700702585 or doug@broadlandsjersey.com
- Call James on 07829835076 or james@broadlandsjersey.com



21 Le Clos Vaze St. Johns Road

St. Helier, Jersey

First Time Buyers Only. This impeccably presented 3 bedroom semi-detached residence boasts a spacious interior, with three generously proportioned double bedrooms complemented by two bathrooms one being an En-suite.

Built over three floors the property has a great size lounge area with seamless access to the outdoor oasis, alongside an ambient eat-in kitchen designed for both functionality and allure. For those in need of a designated workspace you have a study/office.

Beyond the interior, the residence flaunts a secure garage, accompanied by a designated parking space in addition to ample visitor parking. Bathed in an abundance of natural light, the property exudes a sense of airiness and spaciousness throughout, making it an ideal setting to call home.

Situated in close proximity to the town centre and schools, convenience is effortlessly achieved. The property's prime location allows for easy access to an array of amenities and services, ensuring a lifestyle of comfort and practicality.





Living

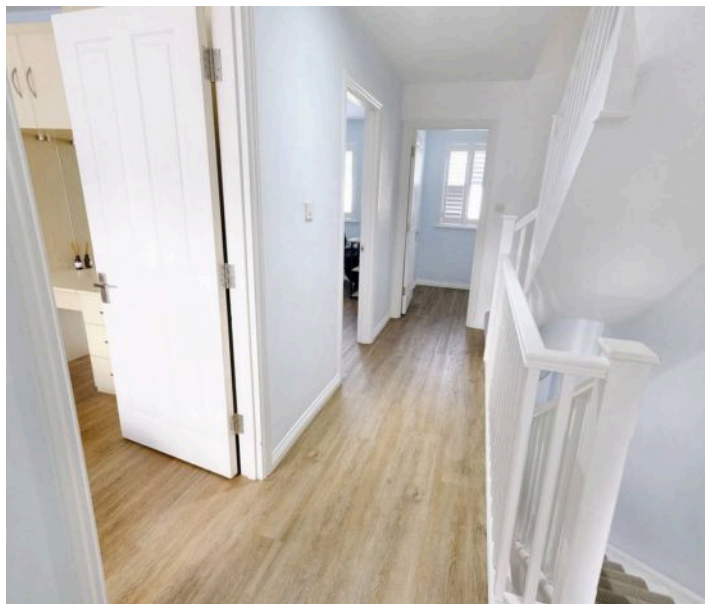
Eat in kitchen, great size lounge with double doors to your garden.

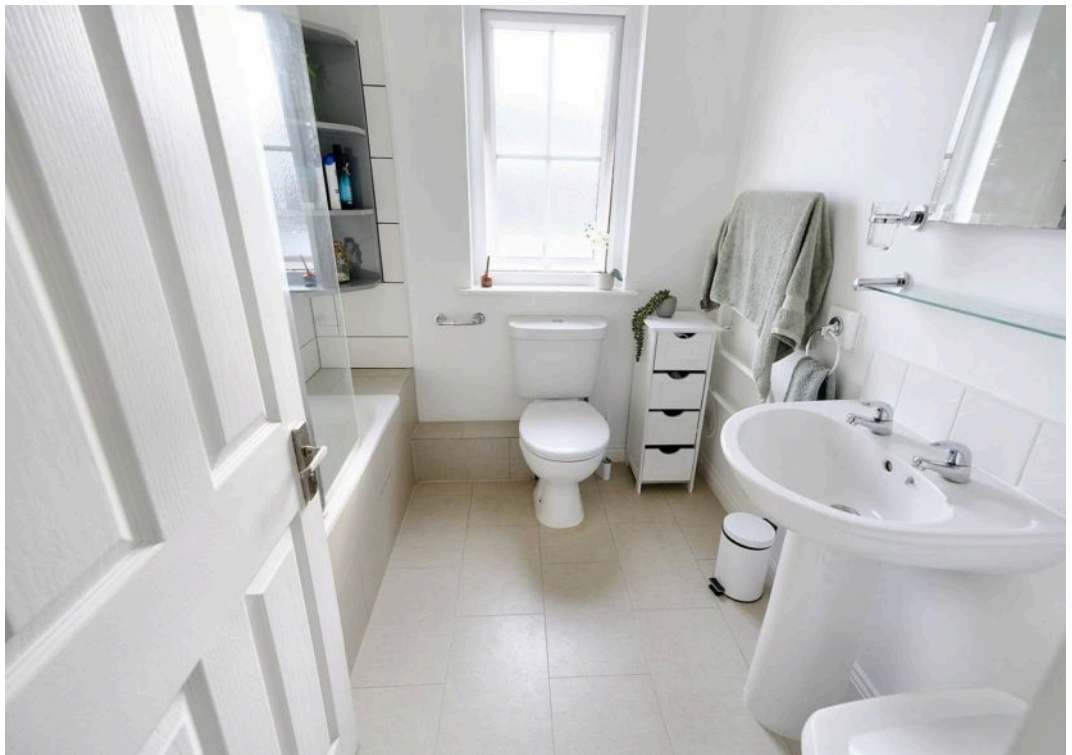
Sleeping

3 double bedrooms, 2 bathrooms, 1 being and En-suite.

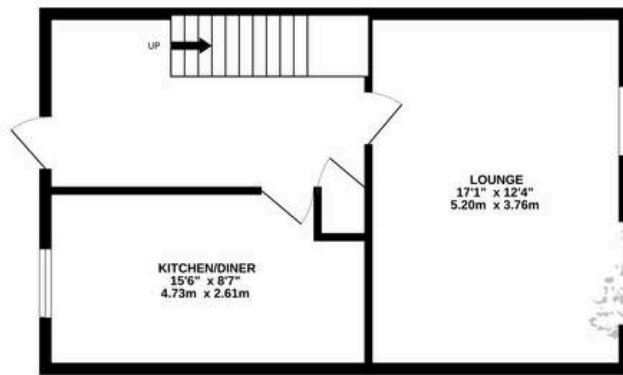
Services

All main services. Double glazing and electric heating.

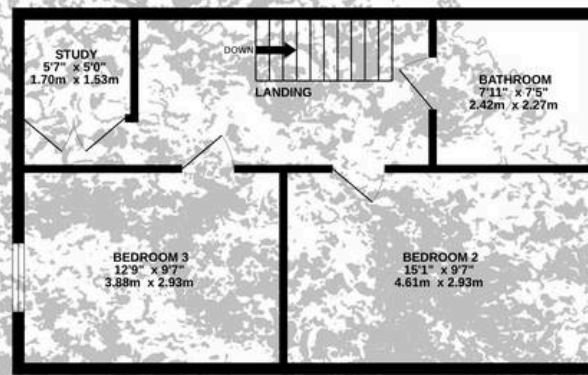




GROUND FLOOR
475 sq.ft. (44.1 sq.m.) approx.



1ST FLOOR
475 sq.ft. (44.1 sq.m.) approx.



2ND FLOOR
297 sq.ft. (27.6 sq.m.) approx.



TOTAL FLOOR AREA : 1247 sq.ft. (115.9 sq.m.) approx.

Whilst every attempt has been made to ensure the accuracy of the floorplan contained here, measurements of doors, windows, rooms and any other items are approximate and no responsibility is taken for any error, omission or mis-statement. This plan is for illustrative purposes only and should be used as such by any prospective purchaser. The services, systems and appliances shown have not been tested and no guarantee as to their operability or efficiency can be given.
Made with Metropix ©2025



Broadlands

Broadlands Estates, Library Place - JE2 3NL

01534 880770 • enquiries@broadlandsjersey.com • www.broadlandsjersey.com/

BROADLANDS

FINDING YOU A HOME SINCE 1972