



Treadgold Street

London, W11 4BP

£3,358 PCM

RIGBY & MARCHANT

Nestled within a delightful Victorian house, this stunning two-bedroom ground floor flat offers an elegant blend of period charm and contemporary living in Notting Hill W11.

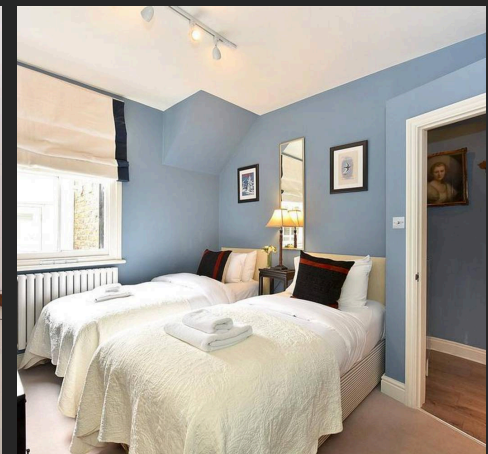
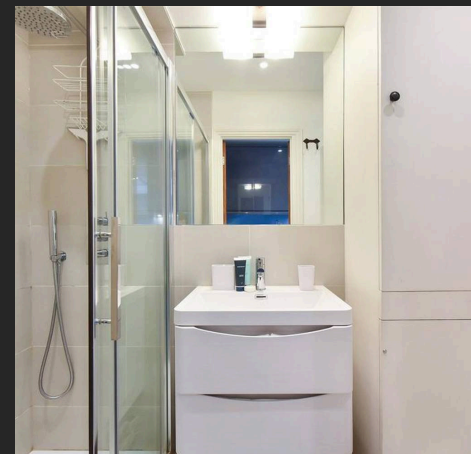
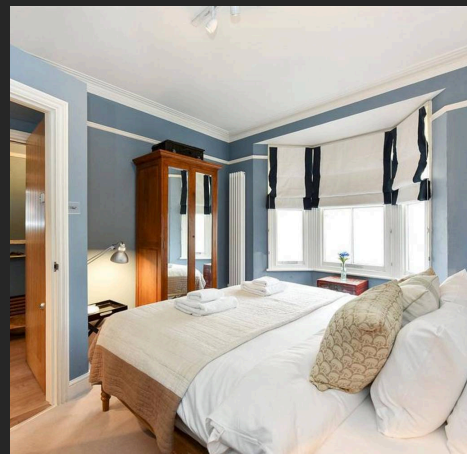
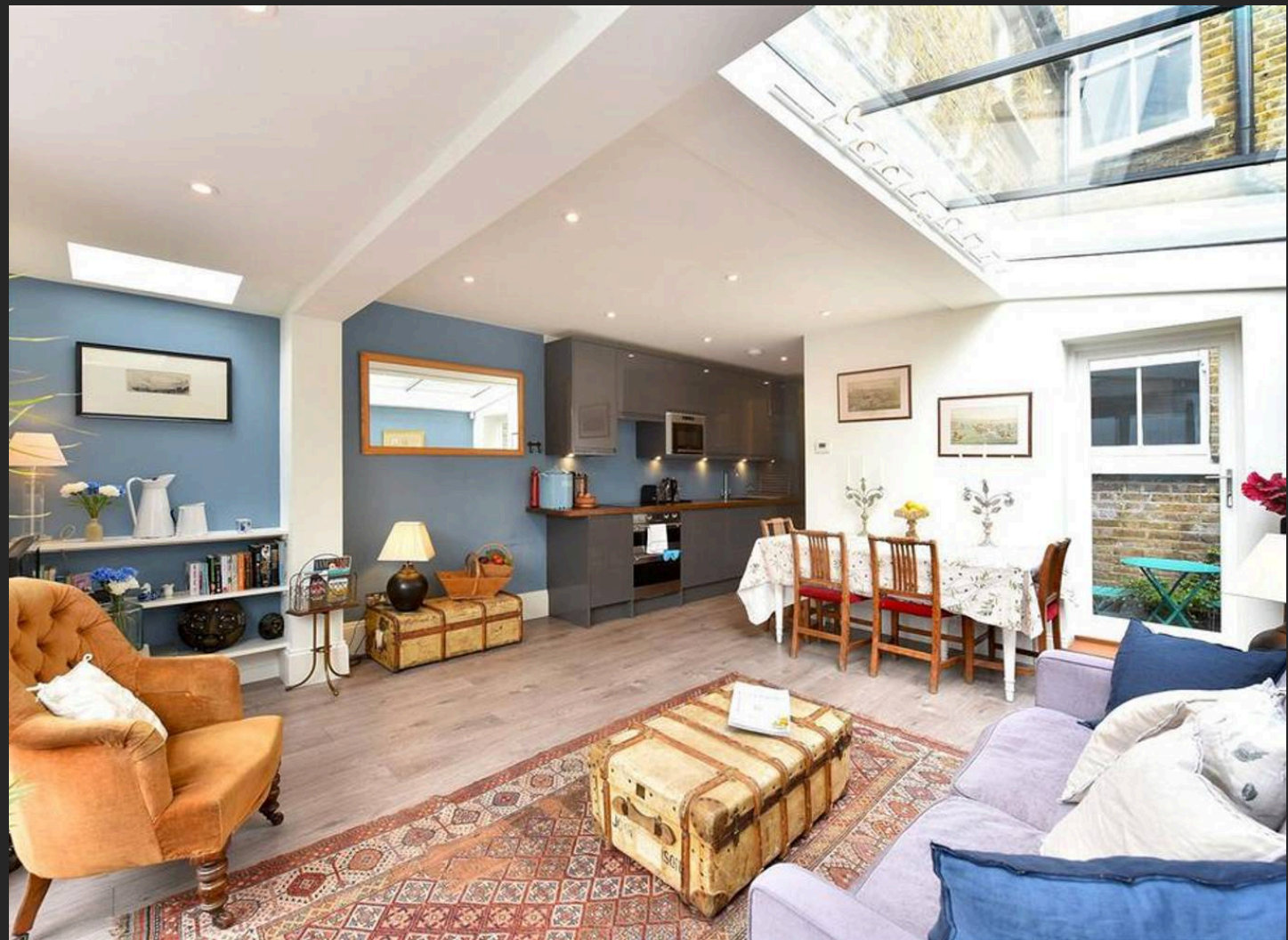
Beautifully presented throughout, the flat retains its original character while benefiting from tasteful modern décor. The front of the property provides the accommodation and comprises two generous double bedrooms and a stylishly appointed shower room. A spacious open-plan kitchen, dining, and reception area occupy the rear of the home with a small inner patio area providing extra light to the large entertaining space.

Ideally situated just to the west of Clarendon Cross within the sought-after Holland Park Avondale Conservation Area. Treadgold Street benefits from being moments away from a wealth of local amenities, including the vibrant shops, cafes, and restaurants of Westfield London as well as Holland Park Avenue to the south and Ladbroke Grove and the iconic Portobello Market to the east. The Kensington Leisure Centre is also just a stone's throw away. For those seeking excellent transport links, both Latimer Road, Ladbroke Grove, and Holland Park Underground Stations are within easy reach, providing swift access to the city.

Council Tax band: TBD

EPC Energy Efficiency Rating: C

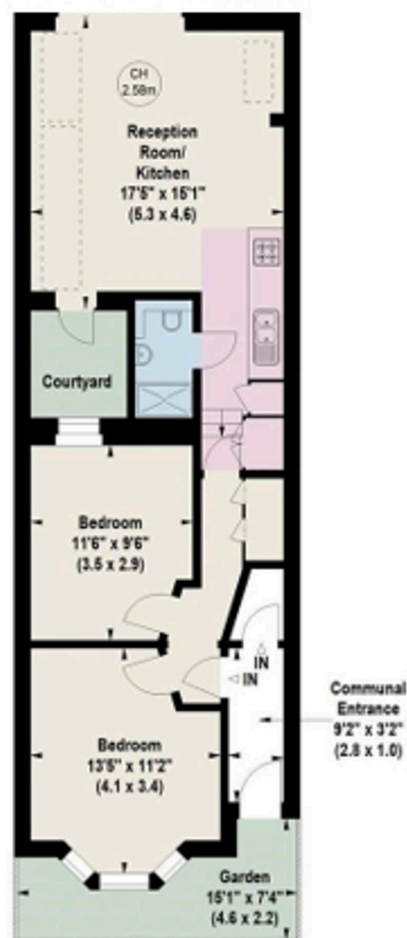
EPC Environmental Impact Rating: C



Treadgold Street, W11

Approximate Gross Internal Area 633 sq ft (58.8 sq m)

Key :
CH - Ceiling Height



Ground Floor

For identification purposes only, not to scale



Rigby & Marchant

115 Westbourne Studios 242 Acklam Road, London - W10 5JJ

020 7221 7210

sales@rigbyandmarchant.co.uk

www.rigbyandmarchant.co.uk/

RIGBY &
MARCHANT