



Flat 2, 8 Victoria Street, St. Helier, Jersey  
£315,000

**BROADLANDS**  
FINDING YOU A HOME SINCE 1972



## Flat 2, 8 Victoria Street

St. Helier, St Helier

Heading down Victoria Street towards St Thomas's Church, number 8 is on your left hand side about half way down.

- Immaculate recently renovated apartment
- One good size bedroom with dressing area
- Living room plus separate fully fitted modern kitchen
- South facing sun terrace
- Beautifully presented throughout
- Great location only a short stroll to St Helier's centre
- Sole agent
- Please contact Joanna on 07797887751 / [joanna@broadlandsjersey.com](mailto:joanna@broadlandsjersey.com)





## Flat 2, 8 Victoria Street

St. Helier, St Helier

An immaculate recently renovated apartment, set at the back of the building and off the road. Offering one good size bedroom with a dressing area, providing ample space for storage. The apartment also features a spacious living room, perfect for entertaining guests, and a separate fully fitted modern kitchen with all the necessary appliances. There is a south facing sun terrace, perfect for al-fresco dining. The apartment is beautifully presented throughout, with tasteful decor and high-quality finishes, creating a stylish and comfortable living space. Ideally situated, this property benefits from a great location only a short stroll away from St Helier's centre.





### **Living**

Spacious living room leading through to the fully fitted modern kitchen.

### **Sleeping**

Good size double bedroom with dressing area with fitted wardrobes. Double doors leading out to the patio garden. En-Suite shower room with W.C, wash hand basin and shower cubicle.

### **Outside**

Good size south facing patio garden. No designated parking however the apartment is in a residents parking zone.

### **Services**

All mains, fully double glazed. Electric heating. Service charge £122 per month to include building insurance, communal lighting and cleaning, contribution to sinking fund.

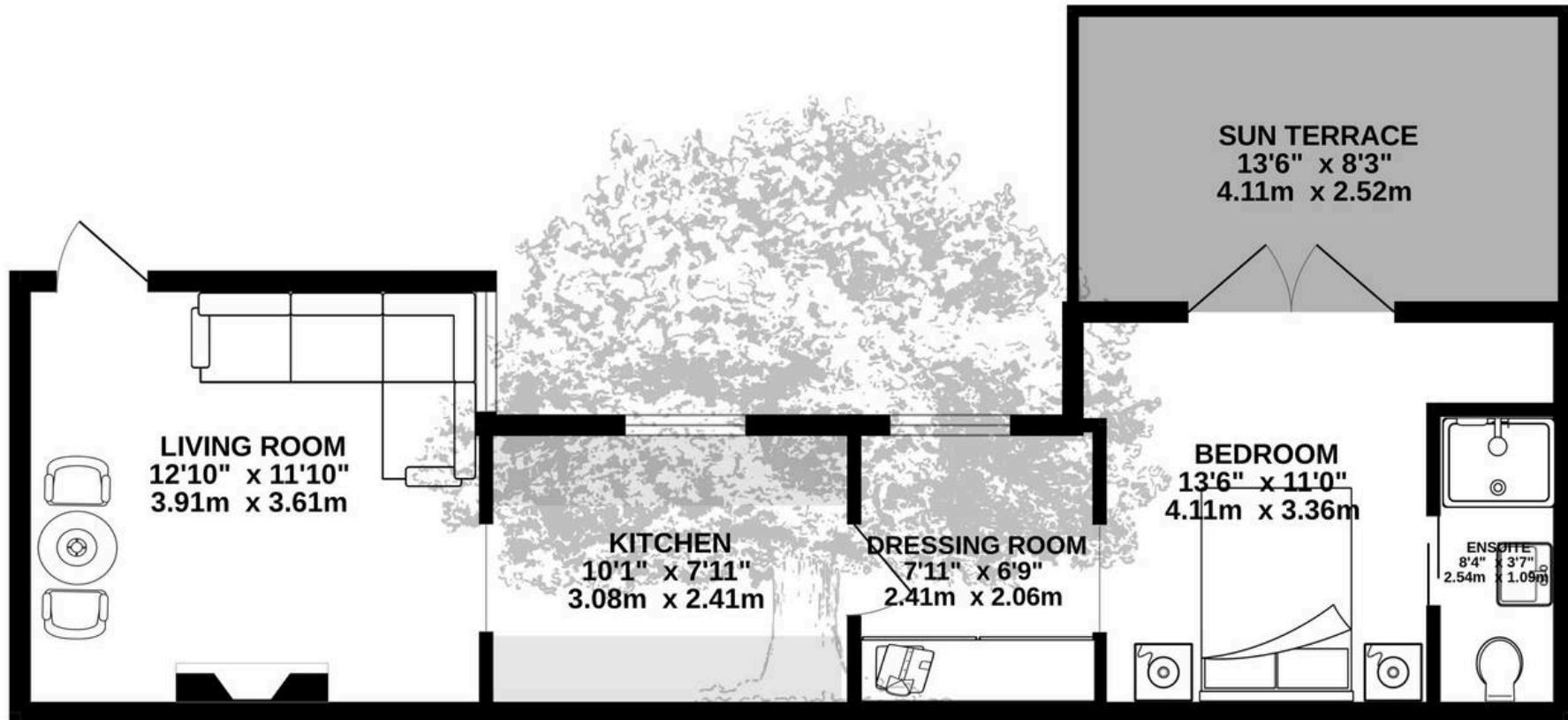








**GROUND FLOOR**  
424 sq.ft. (39.4 sq.m.) approx.



TOTAL FLOOR AREA : 424 sq.ft. (39.4 sq.m.) approx.

Whilst every attempt has been made to ensure the accuracy of the floorplan contained here, measurements of doors, windows, rooms and any other items are approximate and no responsibility is taken for any error, omission or mis-statement. This plan is for illustrative purposes only and should be used as such by any prospective purchaser. The services, systems and appliances shown have not been tested and no guarantee as to their operability or efficiency can be given.  
Made with Metropix ©2023





## Broadlands

Broadlands Estates, Library Place - JE2 3NL

01534 880770 • [enquiries@broadlandsjersey.com](mailto:enquiries@broadlandsjersey.com) • [www.broadlandsjersey.com/](http://www.broadlandsjersey.com/)

# BROADLANDS

FINDING YOU A HOME SINCE 1972