



## 8 Marineside, Bracklesham Bay

Guide Price £480,000

## 8 Marineside

Bracklesham Bay, Chichester

Situated within a secure gated beachside development, 8 Marineside offers split-level accommodation that captures the essence of coastal living. With beautiful sea views and direct beach access, this terraced house is highly sought-after for permanent residence, holiday getaways, or investment opportunities. The intelligently designed interior features small flights of stairs connecting various areas, creating a spacious and inviting living space. Upon entering, a hall leads to a convenient shower room and a ground floor bedroom with large built-in storage space.

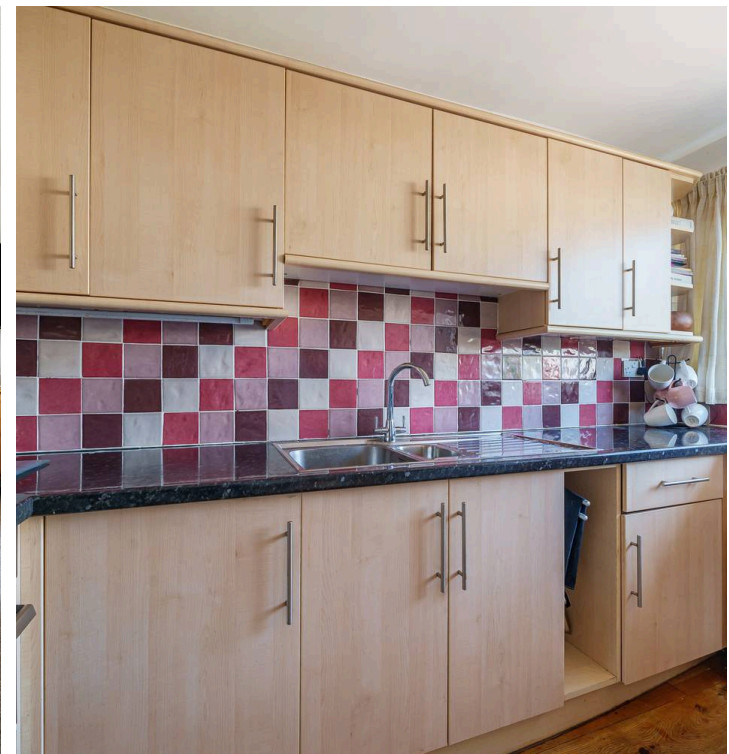
Ascending a short flight of stairs brings you to the first floor, where a kitchen and dining room await. The kitchen offers ample storage, and the dining area overlooks the rear garden, opening onto a raised balcony perfect for outdoor enjoyment. Another flight of stairs leads to the sitting room, featuring expansive wall-length glazing and a balcony with beautiful shoreline views. This area also includes exceptional storage. The upper floor comprises three additional bedrooms, including a spacious principal bedroom. A well-appointed family bathroom with a walk-in shower completes the accommodation.

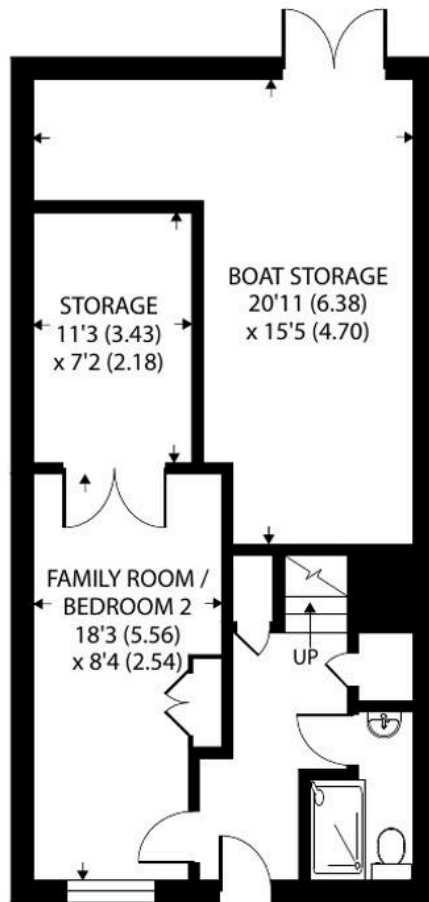
To the rear, a west facing paved garden offers low maintenance and a secure space to enjoy the sounds of the sea, underneath the balcony offers convenient storage for water sports equipment. To the front of the property a driveway for multiple vehicles provides off road parking.

Council Tax band: C - £2,080.97 - 2025/26

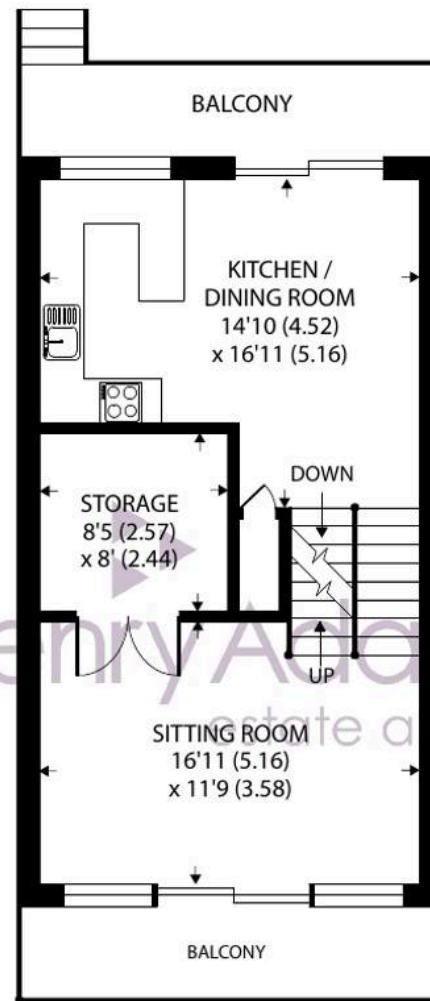
Tenure: Freehold

EPC Energy Efficiency Rating: C

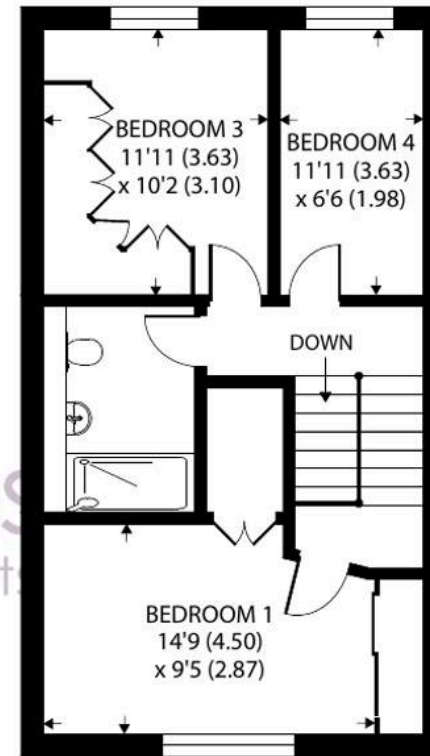




GROUND FLOOR



FIRST FLOOR



SECOND FLOOR

Approximate Area = 1449 sq ft / 134.6 sq m

Outbuilding = 236 sq ft / 21.9 sq m

Total = 1685 sq ft / 156.5 sq m

For identification only - Not to scale



## Henry Adams - East Wittering

Henry Adams LLP, 14 Shore Road, East Wittering - PO20 8DZ

01243 672721

[eastwittering@henryadams.co.uk](mailto:eastwittering@henryadams.co.uk)

[www.henryadams.co.uk/](http://www.henryadams.co.uk/)

Agents Note - Our particulars are for guidance only and are intended to give a fair overall summary of the property. They do not form part of any contract or offer, and should not be relied upon as a statement or representation of fact. Measurements, areas and distances are approximate only. Photographs may include lifestyle shots and pictures of local views. No undertaking is given as to the structural condition of the property, or any necessary consents or the operating ability or efficiency of any service, system or appliance. Please ask if you would like further information, especially before you travel to the property.