





Breamwater Gardens

Richmond, Richmond

Three-bedroom townhouse with garage and driveway in a peaceful riverside close near Ham Common and Teddington Lock. Refurbished in 2018–2019 with new kitchen, bathrooms, electrics and heating. Spacious living areas, private garden, and offered with no onward chain. Council Tax band: E, Tenure: Freehold, EPC Energy Efficiency Rating: E.

- Approx. 1282 sq ft / 119 sq m across three floors
- Three bedrooms and two modern bathrooms
- Garden-level family/reception room with French doors
- Offered with no onward chain
- Large first-floor sitting room with wide picture window
- Kitchen/breakfast room with modern fittings
- Refurbished 2018–2019 including kitchen, bathrooms, rewire, boiler & radiators
- Oak flooring to the ground floor and kitchen
- New top floor windows and front door
- Attached garage and driveway parking
- Rear garden with patio and planting
- Quiet cul-de-sac by the River Thames
- Scope for future alterations/extensions





Breamwater Gardens, Richmond, TW10

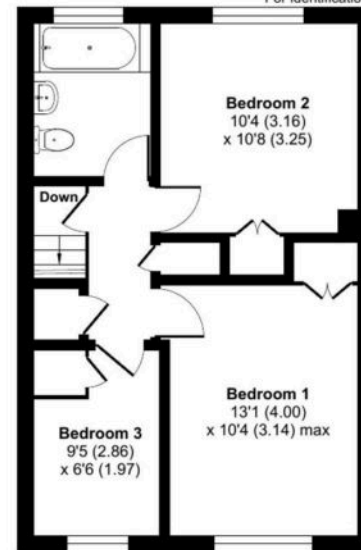
Approximate Area = 1124 sq ft / 104.4 sq m

Garage = 148 sq ft / 13.7 sq m

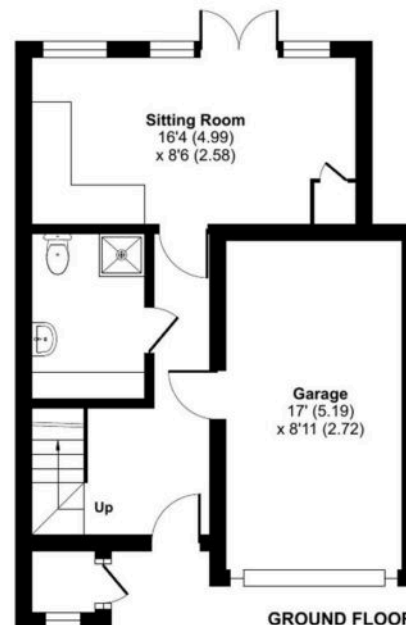
Store = 10 sq ft / 0.9 sq m

Total = 1282 sq ft / 119 sq m

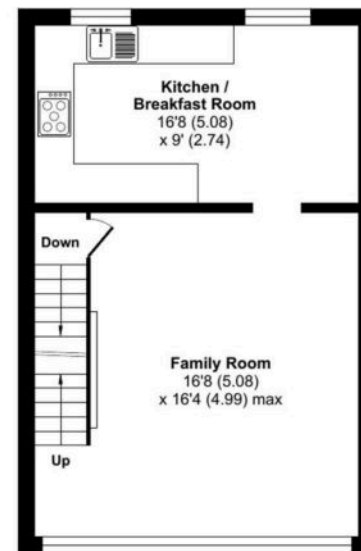
For identification only - Not to scale



SECOND FLOOR



GROUND FLOOR



FIRST FLOOR