



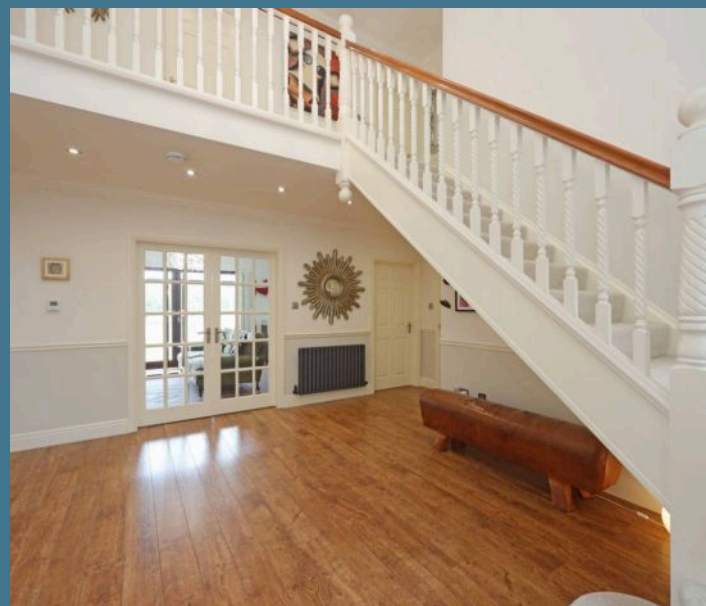
FOLLOWWELLS

The Oaks Walls Wood, Baldwins Gate - ST5 5LD
£785,000

- Individual Executive Family Residence
- Cul-de-sac Setting Within Desirable Rural Development
- Stunning Panoramic Rural Views
- Immaculately Presented And Reappointed Throughout
- Imposing Reception Hallway Entrance
- Four Receptions Including Family Dining Kitchen
- Luxurious Bath/Shower Rooms
- Detached Triple Garage Block
- Impressive Low Maintenance Terrace Garden

A truly stunning individual design executive residence, situated at the end of a highly desirable rural development locally known as Madeley Park Wood. Enjoying a cul-de-sac location, with panoramic rural views across Whitmore Valley adjacent to the rear boundary.

There are a wealth of impressive features, not withstanding an imposing grand reception hallway entrance which leads to four separate reception areas. This includes a feature living room with panoramic picture view window and a multi fuel stove. Beautifully presented and reappointed throughout in recent years to include a comprehensively fitted family dining kitchen with modern tall range and large island breakfast bar, replacement luxury bath/shower room suites and master bedroom with a large separate fitted dressing room (former fifth bedroom). The property stands handsomely boasting a wide plot frontage with mature oak trees and ample parking to include a superb detached triple garage block, being the envy for any car fanatic or possible alternative use. To the rear of the property there is an impressive modern landscaped low maintenance garden with composite decking, artificial turf and dedicated entertaining areas which take full advantage of the panoramic rural scenery beyond. Madeley Park Wood is conveniently situated to the outskirts of Baldwins Gate village being very popular and offers a host of amenities to include: Doctor's surgery, primary school, post office village store, butcher delicatessen and gastro pub.





Accommodation detail: –

A truly awe inspiring entrance with a grand reception hallway having double height ceiling and staircase to gallery landing area above. With feature decorative port hole and full height window above the entrance door. Hard flooring continues through to the reception rooms and a cloakroom which is fitted with a modern two-piece suite. The receptions comprise; study/family room and separate dining room having twin window outlook to front aspect. Rear facing principal living room enjoying a panoramic view from a purposely designed large picture window and a multi fuel stove set within an attractive chimney breast recess.

Double doors from the reception hall open into an impressive family dining kitchen space, with double siding patio doors opening onto a raised external balcony area, enjoying further rural views with steps leading to the garden area. The kitchen has been recently and comprehensively refitted comprising; slimline quartz work surfaces with inset sink and boiling water tap. There is an extensive range of stylish matte black units with integrated dishwasher and extend to tall range cupboards/display units incorporating fridge freezer, wine chiller and centrepiece conventional and combined microwave ovens with warming drawer beneath.

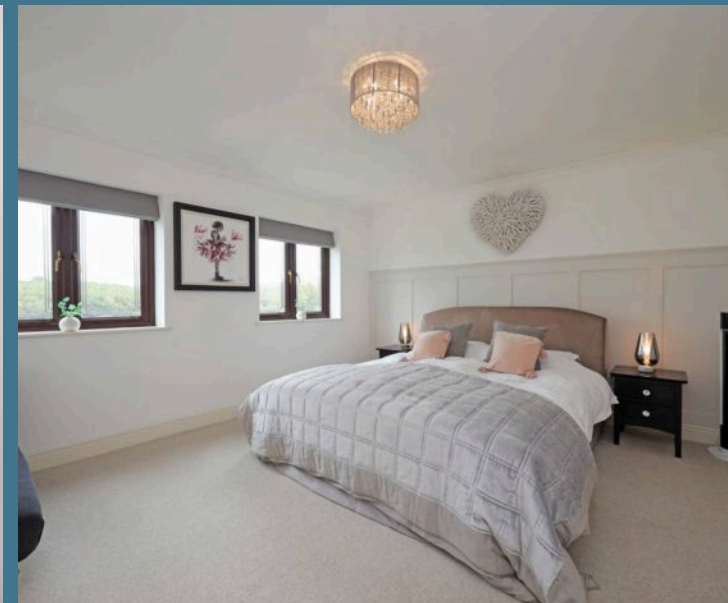
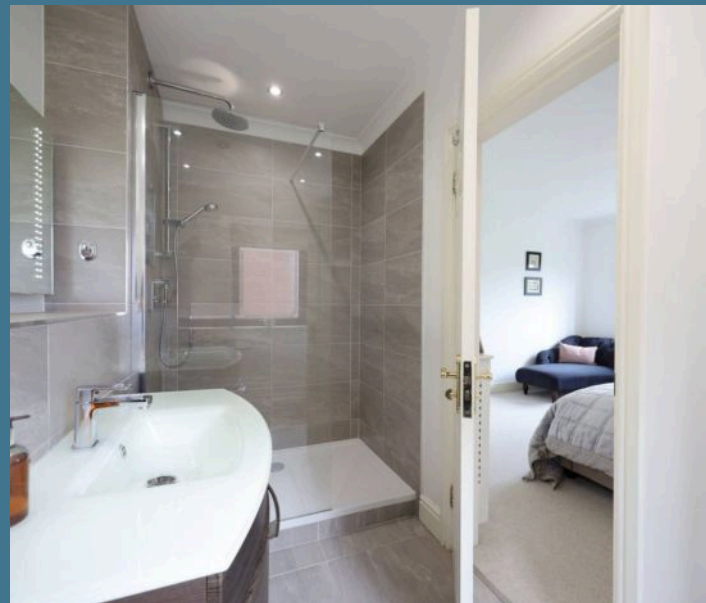


There is also a large island extending to breakfast bar area with matching quartz work surface having inset induction hob/extractor and pan drawers. A second access door leads into the hallway and a further door opens to a utility with matching style units, sink and provision for washing/drying facilities. This has an external side access door and a further double wall cupboard houses a replacement central heating boiler (with residue of 10 year warranty)

A wide tread staircase leads to the gallery landing overlooking the reception hallway with feature ceiling rose and a linen cupboard. The master bedroom enjoys a twin rear view elevated outlook across Whitmore Valley. A former family bedroom has been converted into a large walk in dressing room having built in double wardrobes and further rear view outlook. The dressing room could easily be converted back to a fifth bedroom if required.

The dressing room could easily be converted back to a fifth bedroom if required. There is a luxury ensuite shower room with modern replacement suite comprises enclosed walk-in shower cubicle having remote control concealed rain drip power shower and separate spray, wall hung vanity wash basin and enclosed WC. The shower room is completed with contemporary modern tiling. A second guest bedroom suite is situated to the opposite end of the landing with rear view window and a similar style ensuite shower room with remote control concealed rain drip power shower/spray.

There is also a separate large family bathroom fitted with a luxury four piece suite comprising feature 'clearstone' freestanding bath with freestanding tap/shower spray, low rise walk in shower cubicle with concealed raindrop power shower spray, tabletop vanity wash basin and wall hung WC. The bathroom is finished with similar modern contemporary tiling. Two further large family double bedrooms complete the first floor with the third bedroom having window view to the front and twin double wardrobes A fourth bedroom has laminate flooring and enjoys further rear views.





Externally the property has most handsome appearance, with block paved driveway leading to a substantial parking area in front of a matching brick and pitched tiled roof detached triple garage block. Fitted with up and over doors (two being remote), power connection and ample additional storage within the roof void. There are attractive grounds to the front with lawn area, gravel bed and assorted shrubs and two feature mature oak trees creating an imposing setting. (please be aware that the trees are protected with a preservation order).

Access can be obtained to either side of the property leading to a further impressive modern landscape terraced garden area. Ideally suited for entertaining having low maintenance in mind. Fitted with composite decking, artificial lawn with glass balustrade railings and various night time illumination. The whole garden enjoys superb panoramic views across the adjacent rural landscape of Whitmore Valley. There is a large timber covered entertaining area with tiled floor and barbecue preparation table. Additionally, there is a freestanding all weather timber framed covered gazebo, which is available under separate negotiation. CCTV and burglar alarm system installed.



Council Tax Band: G

Tenure: Freehold

EPC Energy Efficiency Rating: C

