



6 Luther Close, Nottingham - NG3 3PD

Guide Price £180,000

DavidJames
the estate agent



6 Luther Close

Nottingham, Nottingham

Mid-townhouse in an excellent location with no upward chain, close to local shops, bus services & Nottingham City Centre with three double bedrooms, lounge/dining room and low maintenance rear garden.

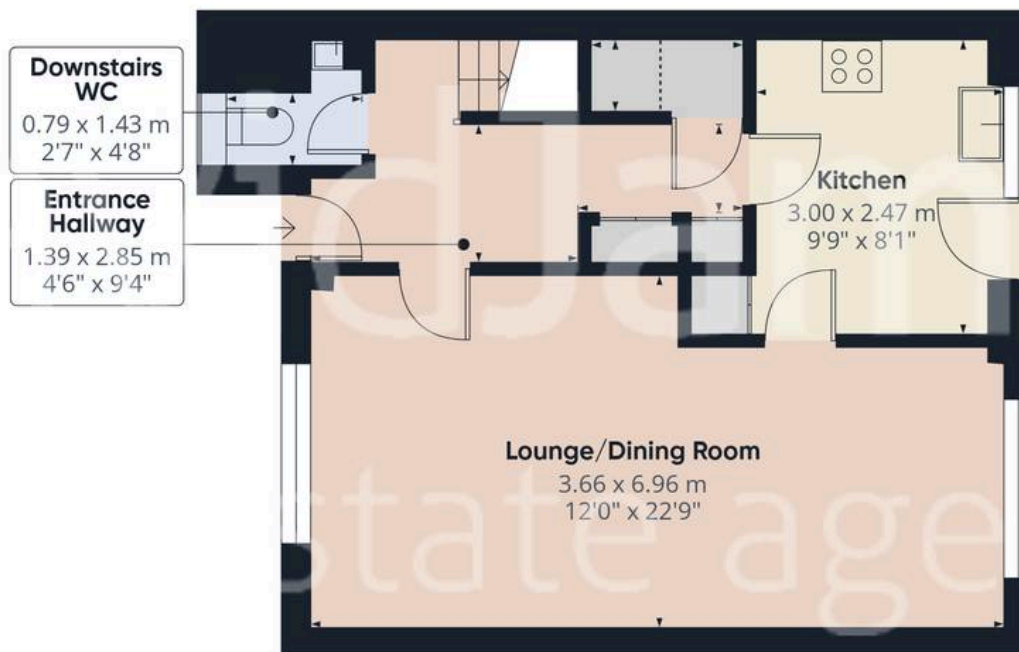
Council Tax band: A

Tenure: Freehold

- Mid-townhouse offered with no upward chain
- Conveniently positioned for easy access to Nottingham City Centre
- Close to local amenities, shops and frequent bus services
- Ideal choice for a first-time buyer or an investor
- Welcoming entrance hallway with downstairs WC for added convenience
- Bright and spacious lounge/dining room with dual aspect windows
- Kitchen with a range of base and wall units and integrated cooking appliances
- Three double bedrooms (main bedroom with sliding wardrobes)
- Modern fully tiled three-piece suite shower room with electric shower
- Enclosed low maintenance rear garden with paved seating area







Floor 0



Floor 1

Approximate total area⁽¹⁾

80.2 m²

864 ft²

Reduced headroom

0.5 m²

5 ft²

(1) Excluding balconies and terraces

Reduced headroom

Below 1.5 m/5 ft

Calculations reference the RICS IPMS 3C standard. Measurements are approximate and not to scale. This floor plan is intended for illustration only.

GIRAFFE360



David James Estate Agents

376 Carlton Hill, Carlton - NG4 1JA

0115 987 8957 • carlton@david-james.com • www.david-james.com

These particulars are produced in good faith and are set out as a general guide only. Measurements are approximate and floor plans are for illustrative purposes only. Services have not been tested. We have established professional relationships with third-party suppliers for the provision of services to Clients, details of which can be found on the property listing page on our website.