



St. Thomas's Road, N4 2QE  
£2,500 pcm

**DAVID  
ANDREW** | your  
most  
valuable  
asset



## St. Thomas's Road, N4 2QE

Spacious two-bedroom period conversion tucked away in this gated courtyard just moments' walk from Arsenal & Finsbury Park stations. Property features include a good-sized reception room with wood flooring, a modern, fully fitted kitchen, a large master bedroom with built-in wardrobes, additional bedroom/office, a fully fitted modern bathroom, and a communal courtyard. Located right in between Arsenal tube & Finsbury Park station, walking distance to the shops, bars, restaurants, and local amenities in Highbury. An abundance of local bus routes is also available, with access in and out of the city. Offered Part Furnished, Available now

Council Tax band: TBD

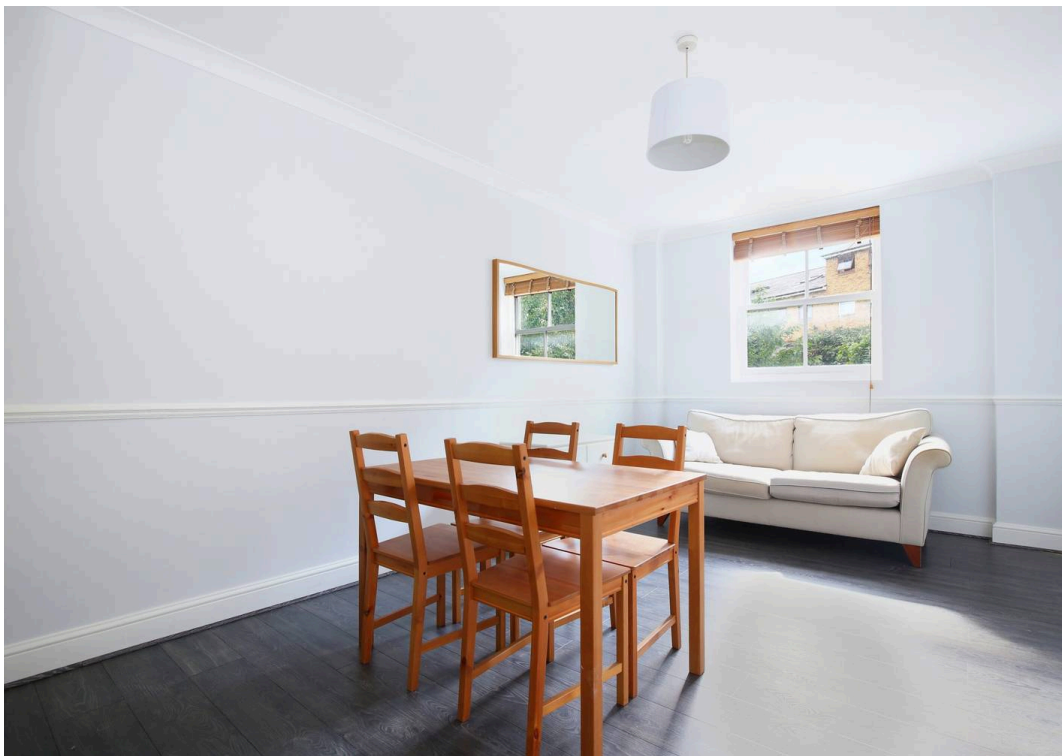
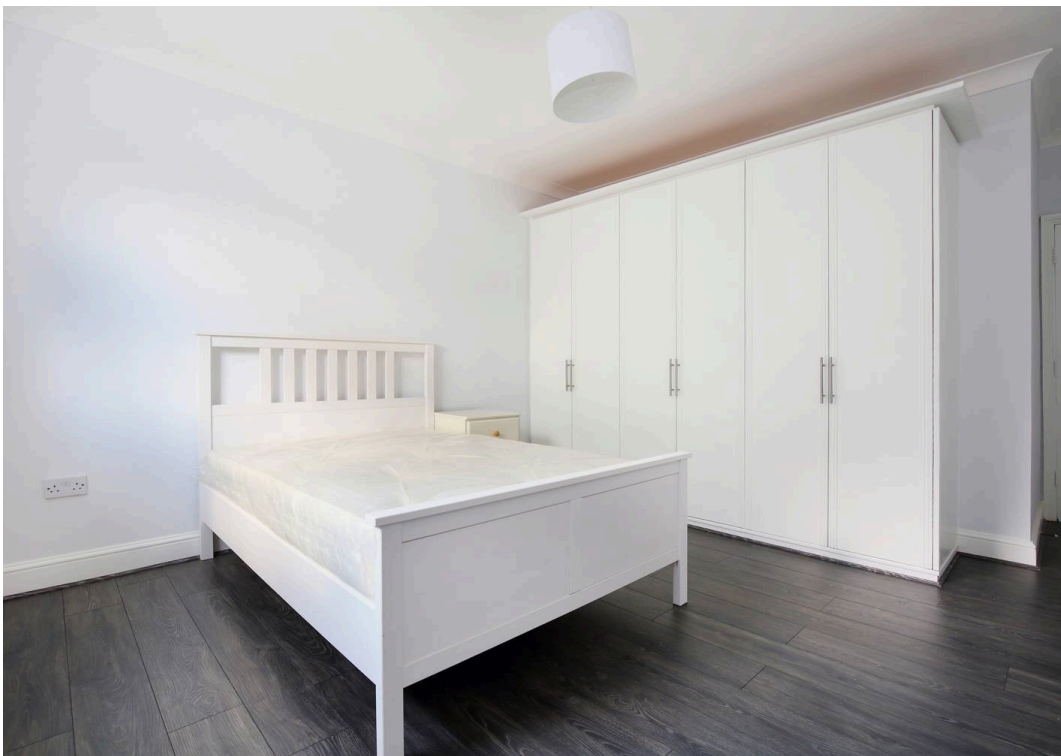
EPC Energy Efficiency Rating: C

EPC Environmental Impact Rating: C

- Offered Part Furnished
- Two Bedrooms
- Modern Fully Fitted Kitchen
- Immaculately Presented
- Period Conversion
- Private Gated Development
- EPC Rating: C
- Available now







---

**Archway Office**

---

671 Holloway Road  
London, N19 5SE

**T** (0)20 7619 3750

---

**Highbury Office**

---

90 Highbury Park  
London, N5 2XE

**T** (0)20 7354 9111

---

**Finsbury Park Office**

---

167 Stroud Green Road  
London, N4 3PZ

**T** (0)20 7281 2000

---

**Property Management Office**

---

235 Blackstock Road  
London, N5 2LL

**T** (0)20 7354 9222

**Agent's Note:**

Whilst care has been exercised in the preparation of these particulars, statements about the property must not be relied upon as representations of statements or fact. Prospective applicants must make and rely upon their own enquiries and those of professional representatives. David Andrew Estates accepts no liability for any error contained in these particulars.



*scan to book  
a viewing*