



Reighton Road, E5 8SG
£1,950 pcm

**DAVID
ANDREW** | your
most
valuable
asset

Reighton Road

One bedroom period conversion located close to the Church Street and Stoke Newington N16. This property has been newly refurbished and finished to the highest standard it features stunning solid oak flooring, sash windows, high ceilings, solid oak work tops, contemporary bathroom, and plenty of useful storage throughout. Within 5 minutes walk of Clapton Station, offering easy access to the City. Available 2nd October 2025

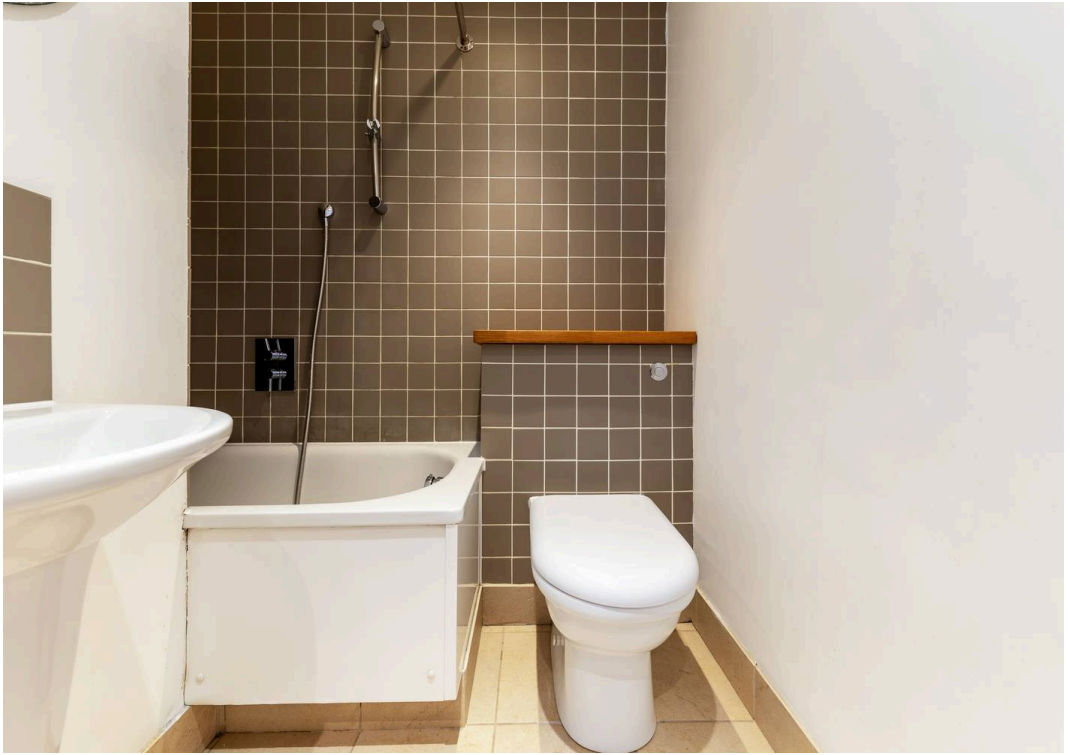
Council Tax band: TBD

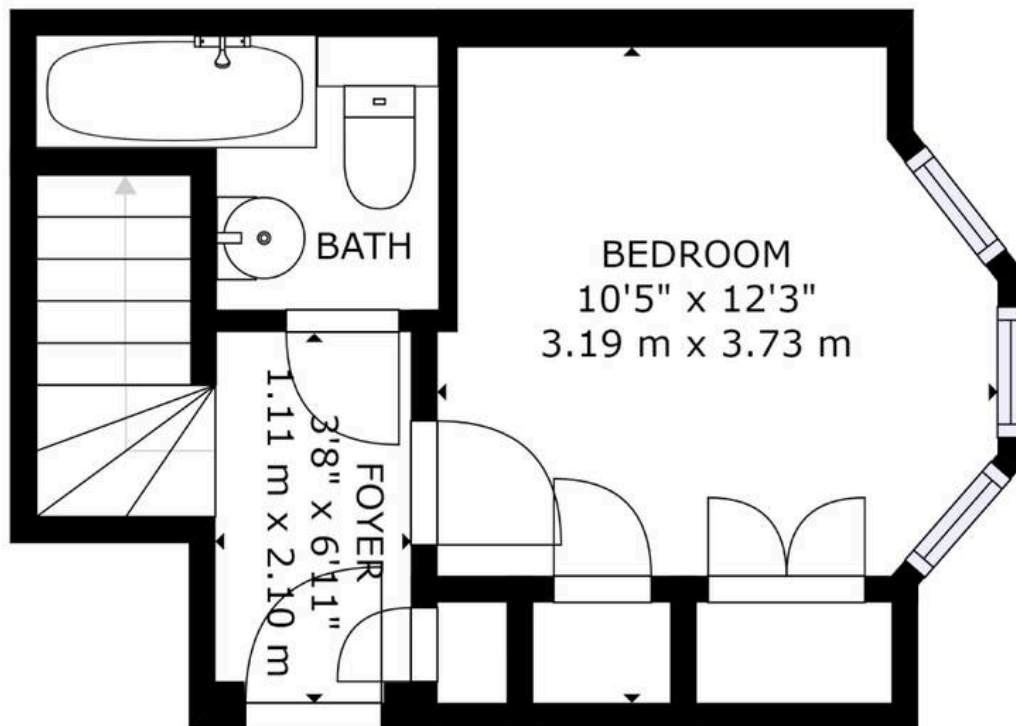
EPC Energy Efficiency Rating: C

EPC Environmental Impact Rating: C

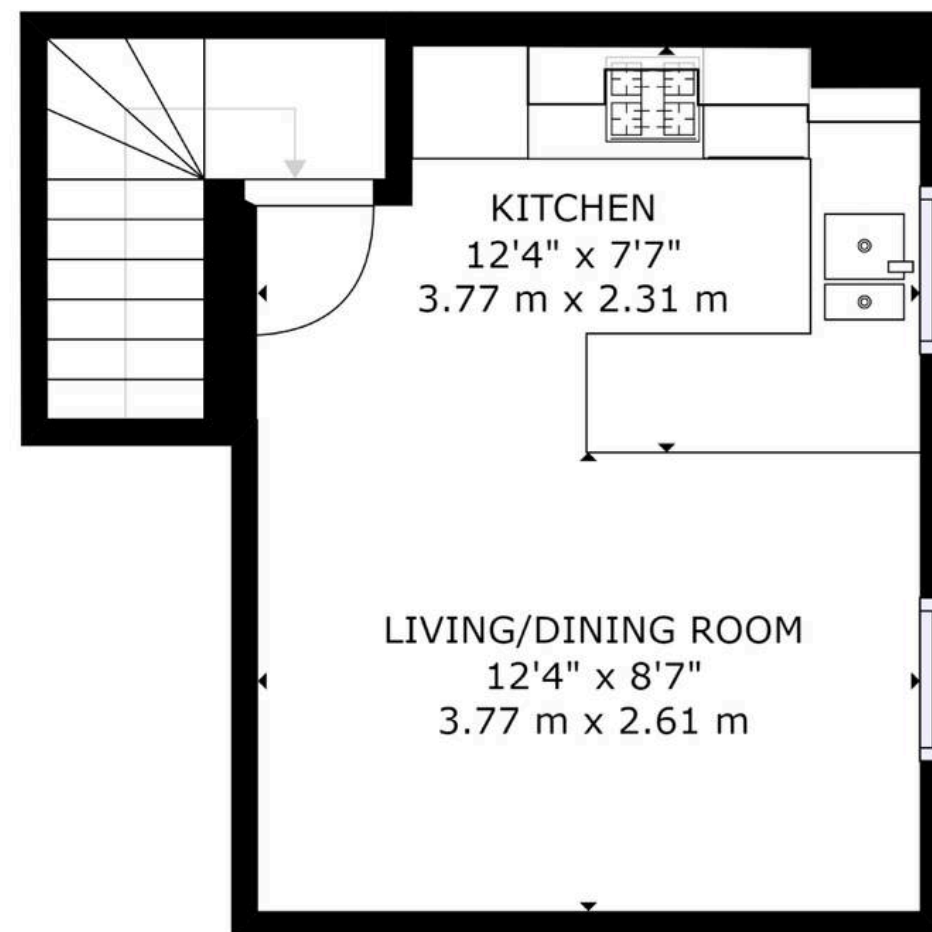
- Period conversion
- Open Plan Kitchen/Living Room
- Unfurnished
- One bedroom
- Plenty of internal storage
- Victorian conversion
- Gas Central Heating
- Available 2nd October 2025







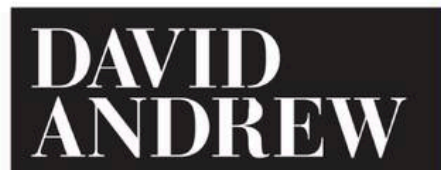
FLOOR 1



FLOOR 2



GROSS INTERNAL AREA
 FLOOR 1: 196 sq. ft, 18 m², FLOOR 2: 228 sq. ft, 21 m²
 TOTAL: 424 sq. ft, 39 m²
 SIZES AND DIMENSIONS ARE APPROXIMATE, ACTUAL MAY VARY.



in these particulars.