



Princess Crescent, N4 2HH
£2,875 pcm

**DAVID
ANDREW** | your
most
valuable
asset

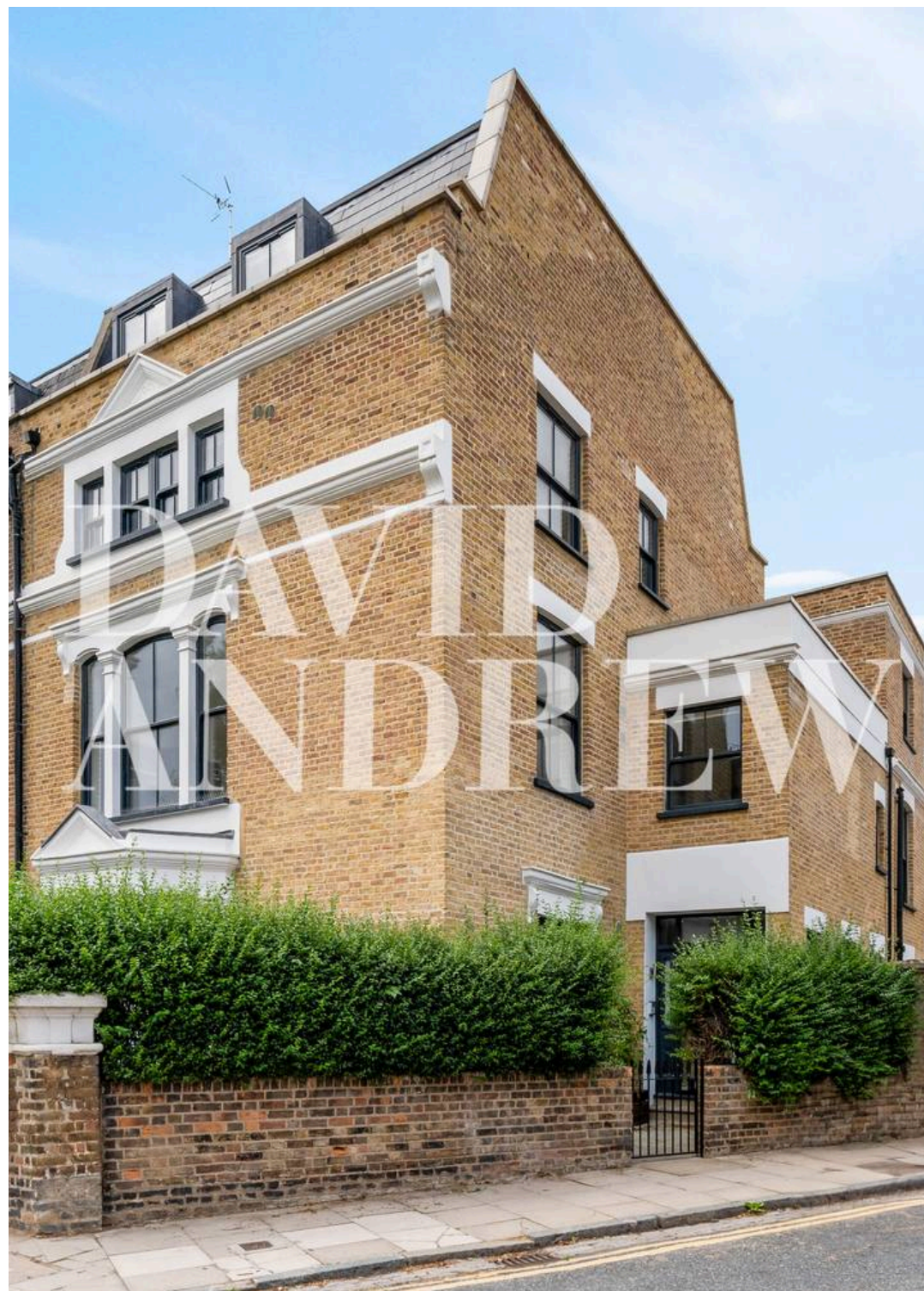
Princess Crescent, N4 2HH

*****Newly Renovated***** Victorian conversion two-bedroom apartment with lots of natural light, and high ceilings, arranged over the ground floor of this period conversion with internal 608 sqft/ 56 sqm living space. This apartment has been beautifully renovated to a high spec, alongside contemporary decoration, also benefits from a bright reception room, good size kitchen with mod cons, two good size bedrooms and one bathroom plus garden patio space.

Princess Crescent is a desirable quiet and well located street in close proximity to shops and cafes, minutes' walk to Stoke Newington, as well as local parks (Clissold Park, Gillespie Nature Reserve and Woodberry Wetlands). It is served by unparalleled access to Zone Two Victoria/Piccadilly lines, Overground and National Rail, and regular bus routes.

Council Tax band: TBD

- Available 13th September
- Offered Unfurnished
- Period Conversion
- Two Bedrooms
- Private Patio
- Good Transport Links
- Residential Street
- Newly Renovated



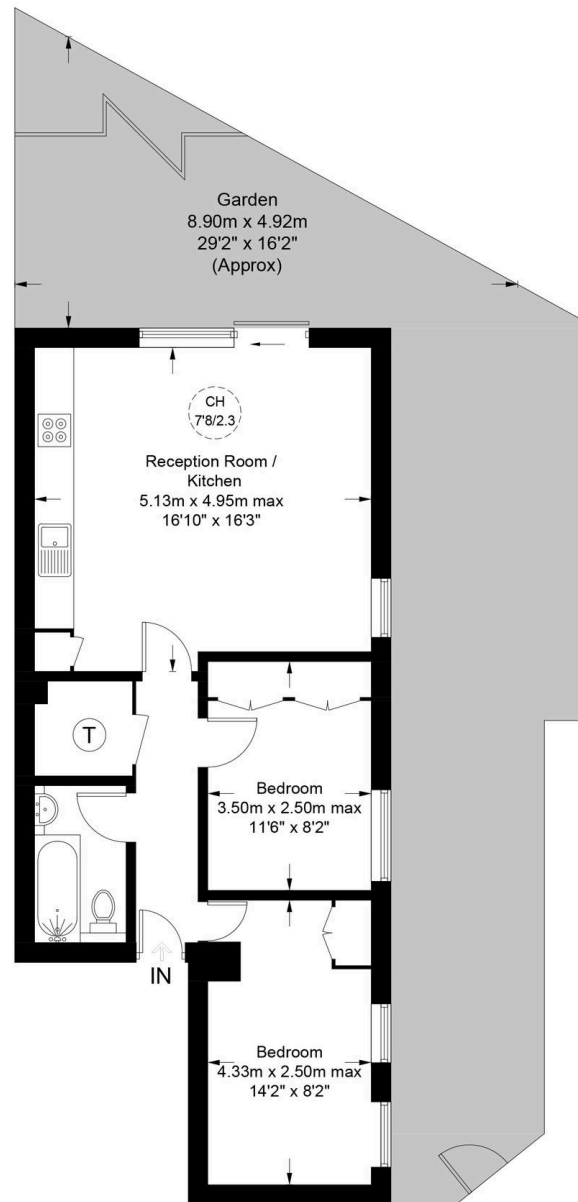




Princess Crescent, N4

Approximate Gross Internal Area = 608 sq ft / 56.5 sq m

**DAVID
ANDREW** | your
most
valuable
asset



Ground Floor

scan to book
a viewing



**Certified
Property
Measurer**

This plan is for layout guidance only. Not drawn to scale unless stated. Windows and door openings are approximate. Whilst every care is taken in the preparation of this plan, please check all dimensions, shapes and compass bearings before making any decisions reliant upon them. (ID990190)

**DAVID
ANDREW** | your
most
valuable
asset

has been exercised in the of these particulars, about the property must not be as representations of in fact. Prospective applicants and rely upon their own nd those of professional es. David Andrew Estates ability for any error contained in these particulars.

Archway Office

671 Holloway Road
London, N19 5SE

T (0)20 7619 3750

Highbury Office

90 Highbury Park
London, N5 2XE

T (0)20 7354 9111

Finsbury Park Office

167 Stroud Green Road
London, N4 3PZ

T (0)20 7281 2000

Property Management Office

235 Blackstock Road
London, N5 2LL

T (0)20 7354 9222

