



St. Stephens Gardens,
Notting Hill, W2.

£995 pw

RIGBY & MERCHANT

Set across the top of a handsome Notting Hill town house on a quiet cul-de-sac, the home has been refurbished with great attention to detail.

The open-plan kitchen and reception is bathed in natural light from two aspects, creating a striking space for both everyday living and entertaining. A secluded decked terrace extends from the apartment, offering privacy and calm above the surrounding streets.

Moments from the character of Westbourne Grove and Portobello Road, the location balances neighbourhood charm with easy access across London. Westbourne Park Underground Station (Circle and Hammersmith & City Lines) is a short walk away, while some of Notting Hill's best restaurants and pubs are close at hand.

Council Tax band: TBD

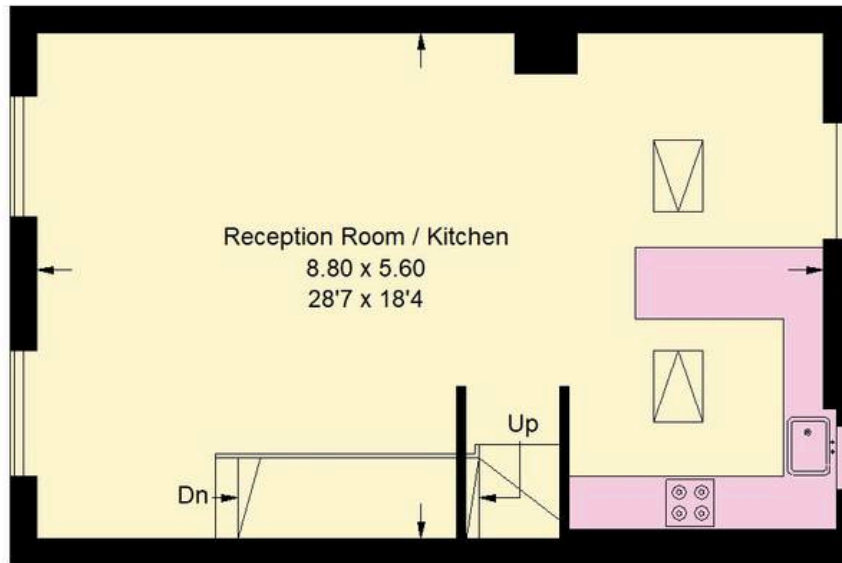
EPC Energy Efficiency Rating: D

EPC Environmental Impact Rating: D

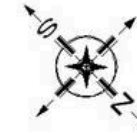



St. Stephens Gardens, W2

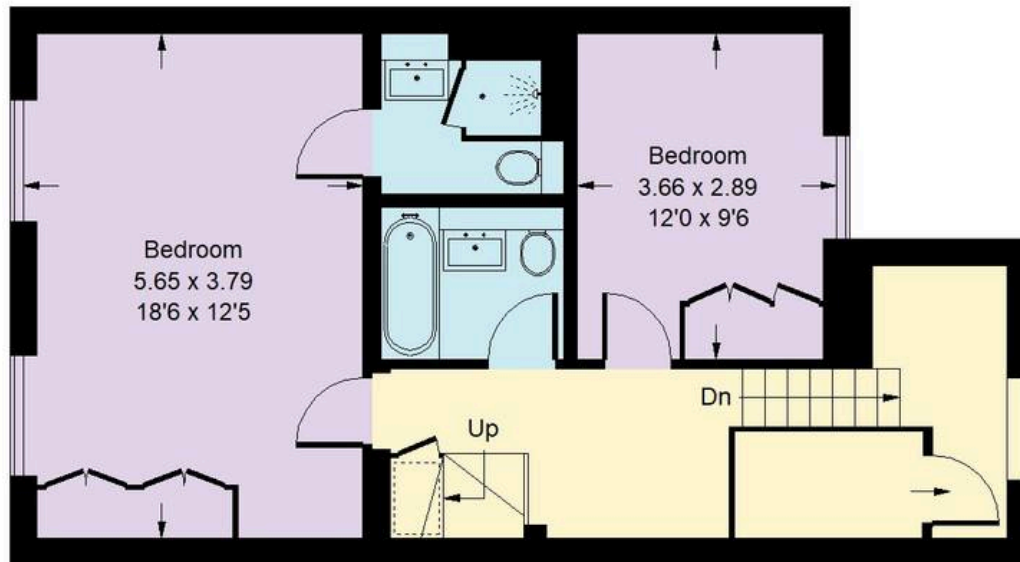
Approx. Gross Internal Area = 109.8 sq m / 1182 sq ft
Storage = 2.8 sq m / 30 sq ft
Total = 112.6 sq m / 1212 sq ft



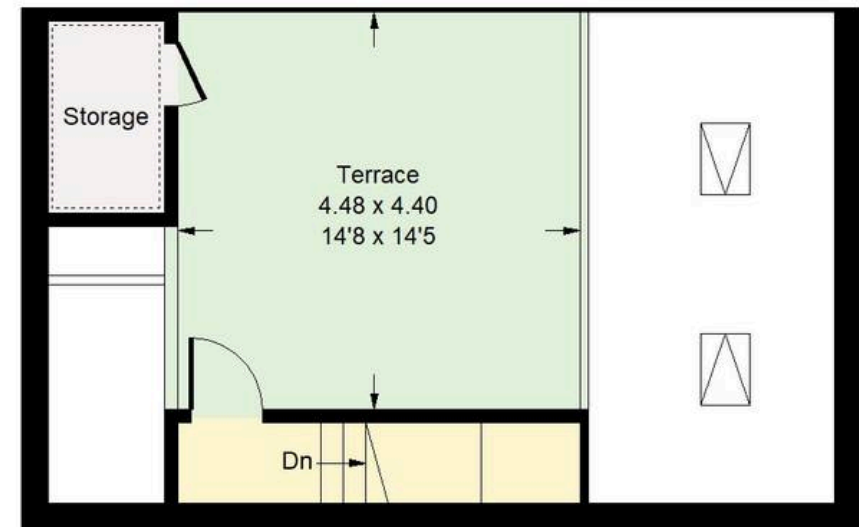
Third Floor



 = Reduced headroom below 1.5 m / 5'0



Second Floor



Fourth Floor

Whilst every attempt has been made to ensure the accuracy of the floor plan, measurements are approximate and not to scale.
No guarantee is given on the total square footage of the property quoted on the plan. Figures given are for guidance.
Plan is for illustration purposes only, not to be used for valuations.



Rigby & Marchant

115 Westbourne Studios 242 Acklam Road, London - W10 5JJ

020 7221 7210

sales@rigbyandmarchant.co.uk

www.rigbyandmarchant.co.uk/

RIGBY &
MARCHANT