



## The Bothy, Old Hutton – LA8 0LU

Kendal

Offers Over £365,000



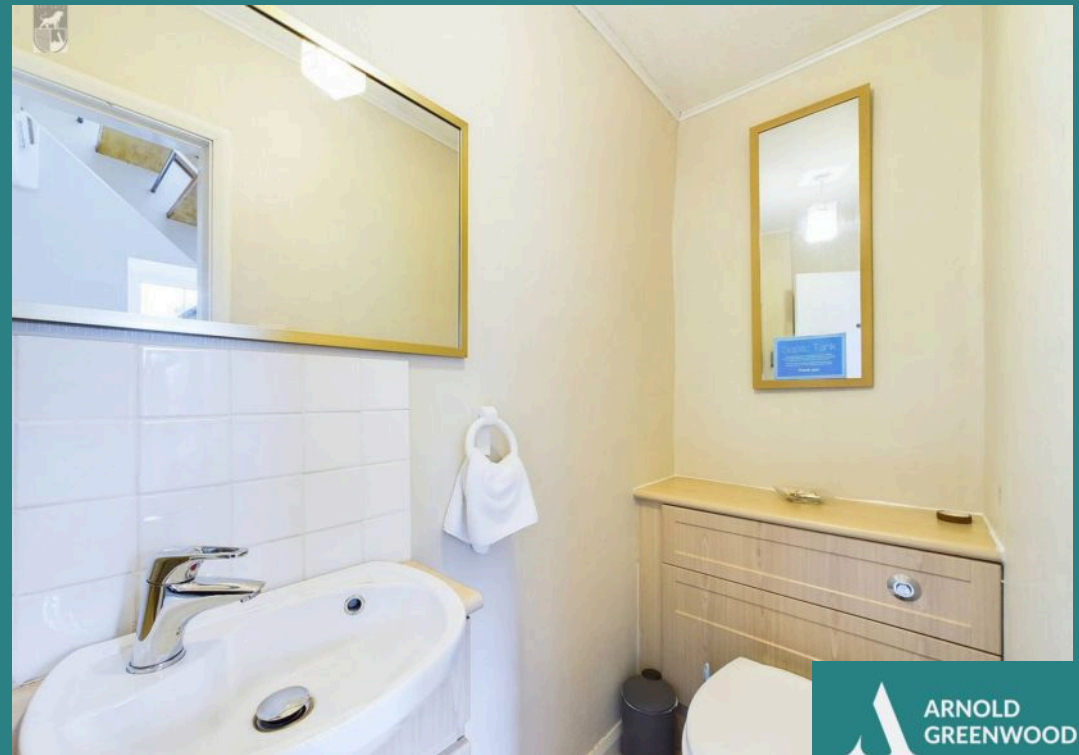
# The Bothy

Old Hutton, Kendal

The Bothy has just had a new treatment plant installed September 2025 and is pleasantly situated in a quiet tranquil setting only minutes away from the mainline station of Oxenholme. It is conveniently placed for Kirkby Lonsdale and Kendal, within easy reach of the Lake District and Yorkshire Dales National Parks and junction 36. The house is well planned, comprising entrance hall with open plan staircase to the first floor, a modern well-appointed kitchen with integrated appliances, an open plan lounge with feature stone fireplace opening into the dining area. There are two double bedrooms (one with en suite), one single bedroom and a further good sized study/office/fourth bedroom, family bathroom and a sun room. Outside are well-tended mature gardens that border onto open fields providing stunning countryside views, parking for a number of cars and a double garage. There are thermal and pv solar panels. A charming and secluded semi-rural home with lots of potential to make it your own special place. No chain.









## ENTRANCE

The uPVC entrance door with glazed panel leads into hallway from where doors lead to the lounge, kitchen and ground floor w.c., vinyl tile effect flooring, stairs to the first floor

## KITCHEN

15' 8" x 13' 5" (4.77m x 4.10m)

Range of modern base, wall and drawer units with complementary work surface over, stainless steel sink unit with mixer tap, built in Neff electric oven and Neff microwave, Neff induction hob with extractor fan over, integrated fridge/freezer, space and plumbing for washing machine and dishwasher, part tiled walls, vinyl tile effect flooring, serving hatch to the dining area, windows and uPVC door to the rear, Velux window.

## LOUNGE

16' 7" x 10' 2" (5.05m x 3.11m)

Feature stone fireplace with timber mantle and housing electric stove style fire, window to the front aspect, open to the dining area.

## DINING AREA

11' 10" x 6' 9" (3.61m x 2.07m)

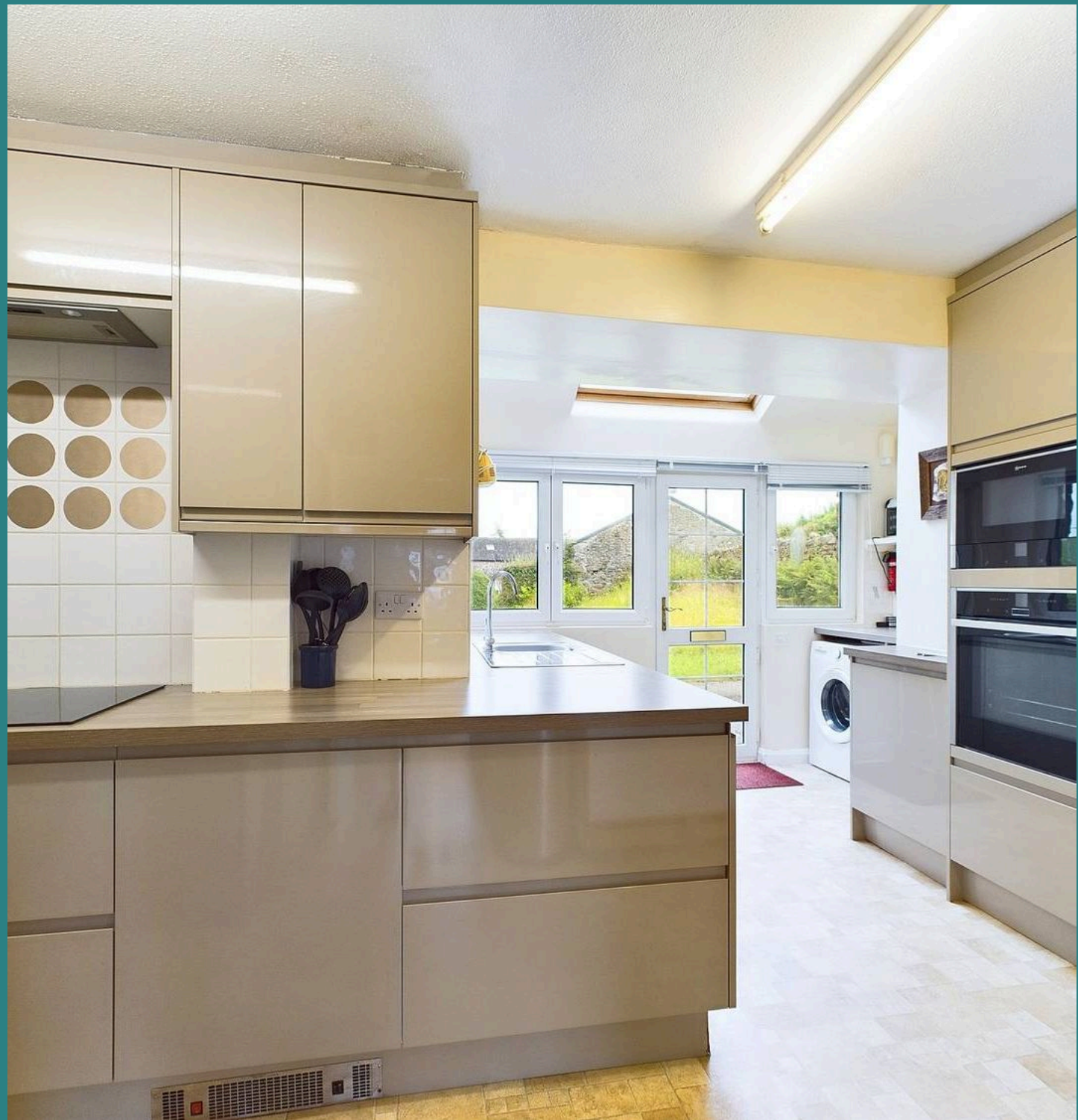
Built in sideboard with cupboards and drawers, window to the rear aspect.

## WC

A white suite comprising vanity unit with wash hand basin with tiled splashback and w.c., vinyl tile effect flooring.

## LANDING

The stairs split at a half landing which has built in cupboards and hanging rail, access door to the garage. The stairs lead to three bedrooms and bathroom, cupboard housing the hot water cylinder and access via ladder to large boarded loft space with power.









### **BEDROOM ONE**

A double room with window to the front aspect, door to en-suite.

### **ENSUITE**

5' 5" x 5' 10" (1.64m x 1.78m)

Suite comprising corner shower cubicle, corner vanity unit with wash hand basin and w.c., ladder style radiator, mirrored cabinet, deep sill window with obscure glazing to the front aspect.

### **BEDROOM TWO**

12' 2" x 8' 10" (3.70m x 2.69m)

A double room with built in wardrobes with overhead storage and dressing table, deep sill window to the rear aspect.

### **BEDROOM THREE**

10' 4" x 10' 11" (3.15m x 3.34m)

Steps lead down into this room, built in storage cupboards and shelving, exposed beam, window to the side aspect.

### **BEDROOM FOUR**

6' 11" x 10' 8" (2.11m x 3.26m)

A single room with window to the rear aspect.

### **BATHROOM**

8' 2" x 5' 6" (2.48m x 1.68m)

The white suite comprising bath with shower over and screen, vanity unit incorporating wash hand basing and w.c., ladder style radiator, tiled walls and vinyl tile effect flooring, deep sill window with obscure glazing to the rear aspect.

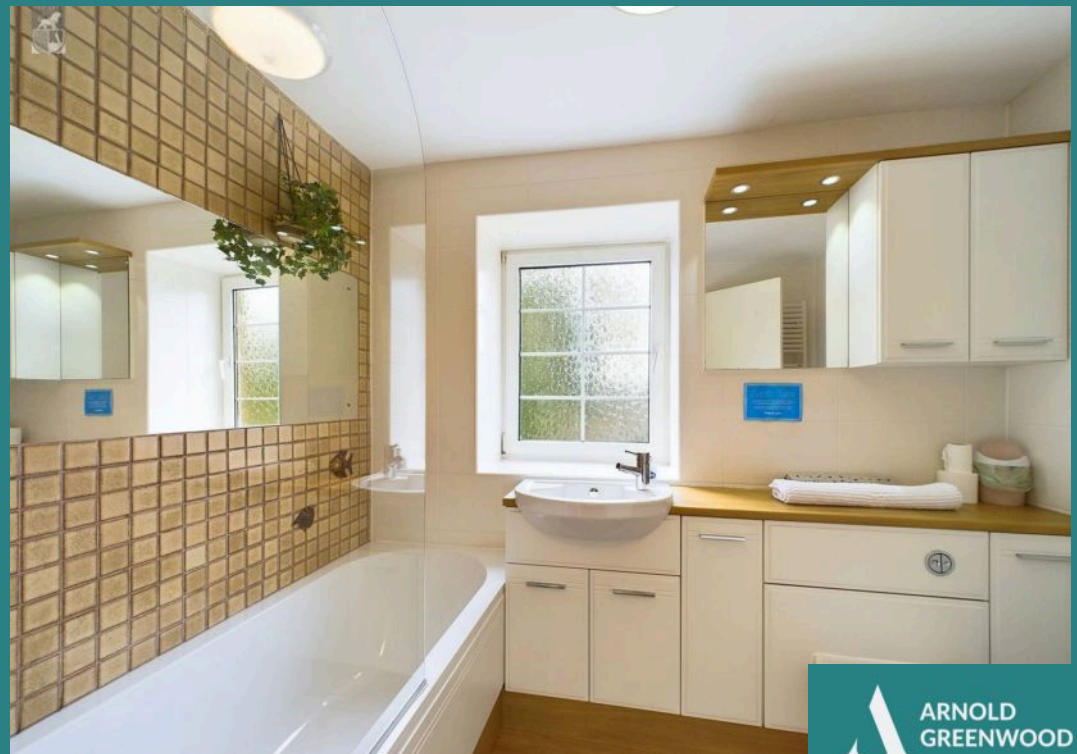
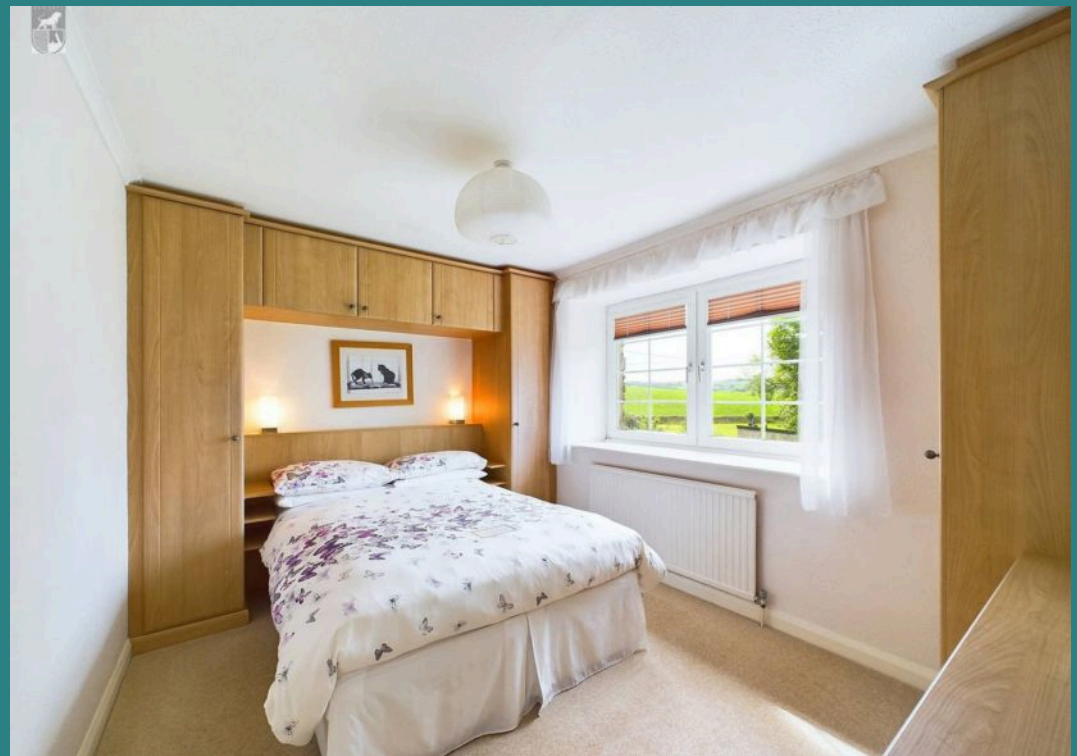
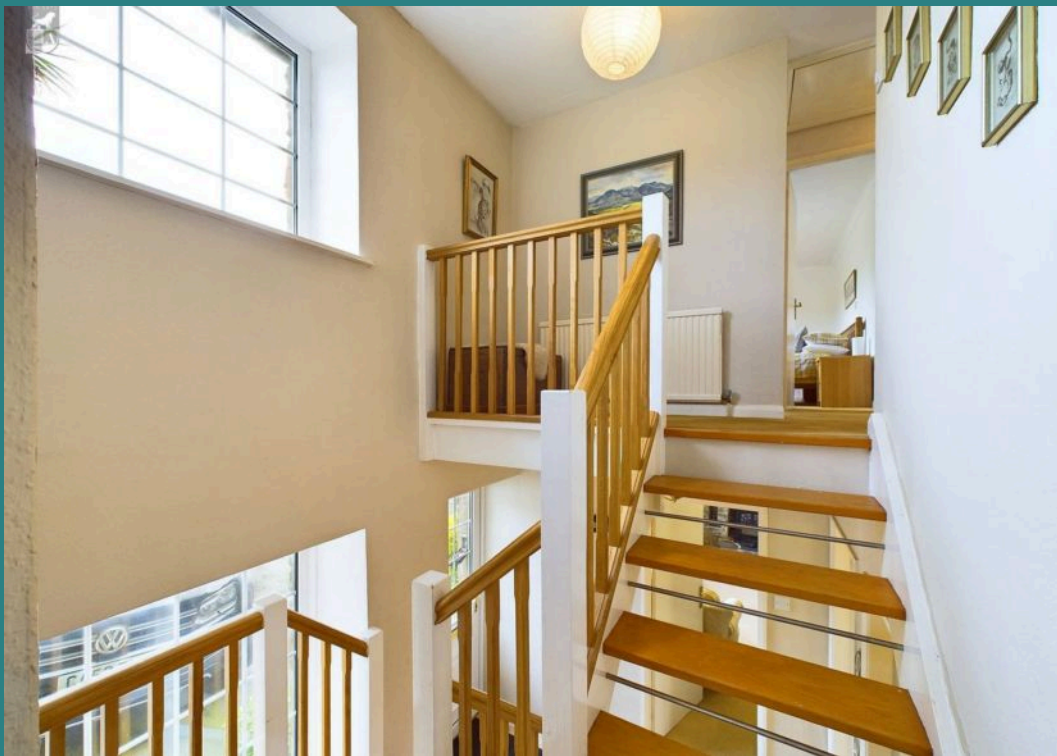
### **OCCASIONAL ROOM/STUDIO**

12' 8" x 8' 4" (3.86m x 2.53m)

Sliding doors leads to this versatile room with plenty of storage cupboards around three sides, dual aspect windows and two Velux windows.









## GARDEN

Mature gardens bordering open fields and stunning countryside views.

## GARAGE

Double Garage

Parking and a large Garage

## DRIVEWAY

2 Parking Spaces







Ground Floor



Floor 1





## Arnold Greenwood Estate Agents

Arnold Greenwood Solicitors, 8-10 Highgate - LA9 4SX

01539733383

kendal@arnoldgreenwood.co.uk

[www.arnoldgreenwoodestateagency.co.uk/](http://www.arnoldgreenwoodestateagency.co.uk/)



Whilst every care has been taken in the preparation of these sales particulars, they are for guidance purposes only and no guarantee can be given as to the working condition of the various services and appliances. Measurements have been taken as accurately as possible but slight discrepancies may inadvertently occur. The agents have not tested appliances or central heating services. Interested applicants are advised to make their own enquiries and investigation before finalising their offer purchase. Money Laundering In the event of prospective purchasers making an offer on a property, in relation to the Money Laundering Regulations photographic ID and Utility bill showing your address will be required. Please contact the office for their information.