



11 Old Station Brae, Troon

In Excess of £170,000

DONALD
ROSS
RESIDENTIAL



11 Old Station Brae

Troon

Stylish 2-bed first floor flat in Troon with lounge enjoying golf course views, modern kitchen, en suite, bathroom, allocated parking and communal gardens. Close to beach and town centre.

Council Tax band: E

Tenure: Freehold

EPC Energy Efficiency Rating: C

EPC Environmental Impact Rating: C

- Modern first floor flat in popular Troon location
- Bright and spacious lounge with open golf course views
- Contemporary fitted kitchen with integrated appliances and granite countertops
- Two double bedrooms, both with built-in wardrobes
- Principal bedroom with stylish en suite shower room
- Modern three-piece family bathroom in neutral tones
- Gas central heating and double glazing throughout
- Allocated residents' parking space for convenience
- Attractive, well-maintained communal gardens
- Close to Troon town centre, beach, schools and transport links























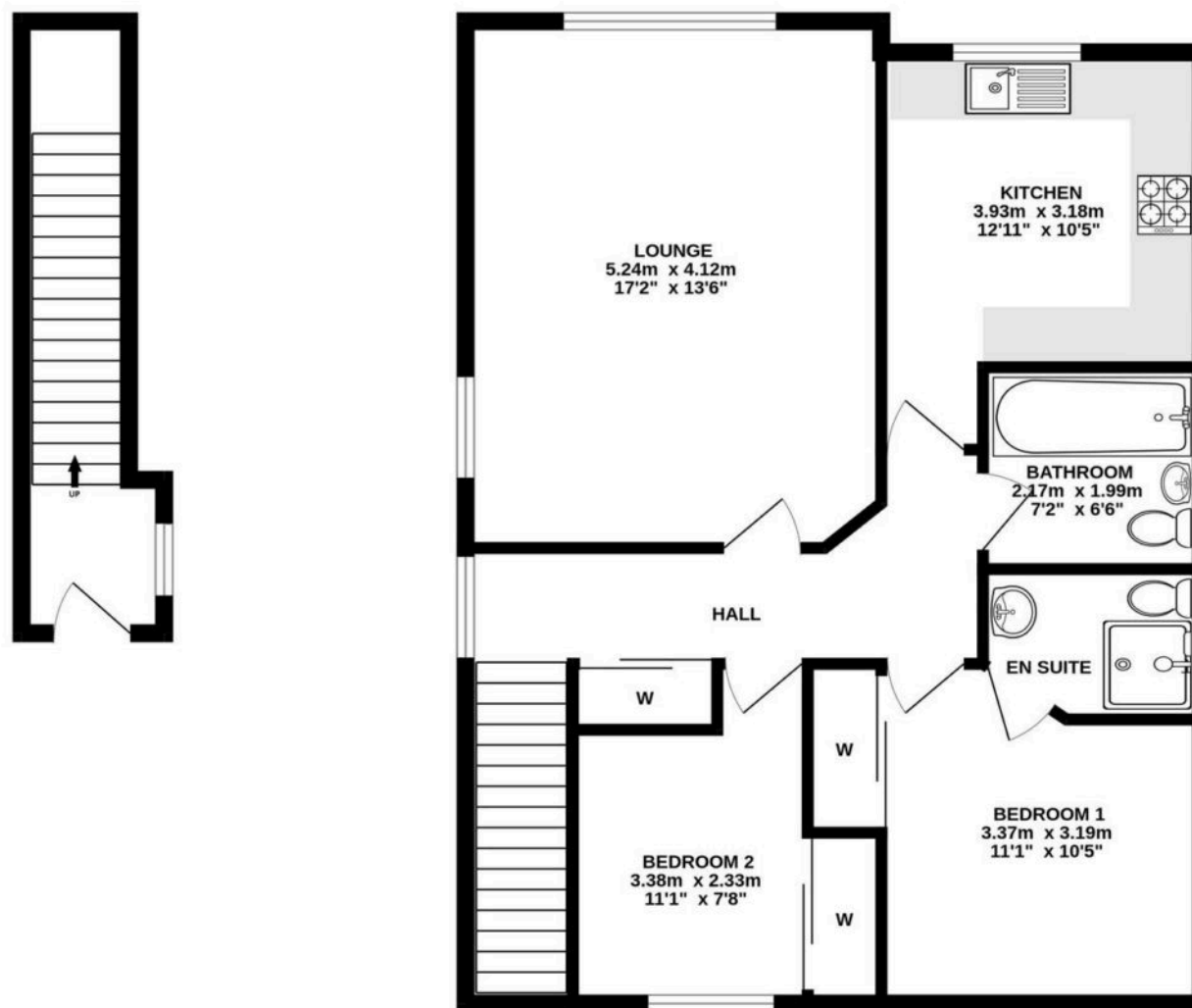












ALL SIZES TAKEN AT WIDEST POINTS

Whilst every attempt has been made to ensure the accuracy of the floorplan contained here, measurements of doors, windows, rooms and any other items are approximate and no responsibility is taken for any error, omission or mis-statement. This plan is for illustrative purposes only and should be used as such by any prospective purchaser. The services, systems and appliances shown have not been tested and no guarantee as to their operability or efficiency can be given.
Made with Metropix ©2025



Donald Ross Residential Ayr

Donald Ross, 1 Beresford Terrace – KA7 2ER

01292 288222 • office@donaldross.co.uk • www.donaldross.co.uk

While every effort has been made to ensure accuracy, buyers should independently verify all details and review the Home Report before submitting an offer. No warranty or representation is given regarding the property, and neither the agent nor the seller accepts responsibility for any inaccuracies. Buyers must satisfy themselves on all legal aspects.