



Bird Court, Colliers End

£600,000 Freehold

4 Bedroom Detached House • Modern Shaker Style With Breakfast Bar • Open plan dining area • Spacious detached garage • Modern Bathroom/ Ensuite • Downstairs WC • Summerhouse • Semi Rural Location



Hallway

Lounge

11' 9" x 14' 2" (3.58m x 4.32m)

Kitchen/Breakfast Room

10' 8" x 17' 9" (3.25m x 5.42m)

Utility Room

Study

7' 1" x 7' 5" (2.15m x 2.27m)

Wc

Bedroom 1

10' 11" x 11' 10" (3.32m x 3.61m)

En-suite

Bedroom 2

8' 0" x 10' 8" (2.44m x 3.25m)

Bedroom 3

8' 2" x 11' 1" (2.49m x 3.38m)

Bedroom 4

6' 9" x 10' 8" (2.06m x 3.26m)

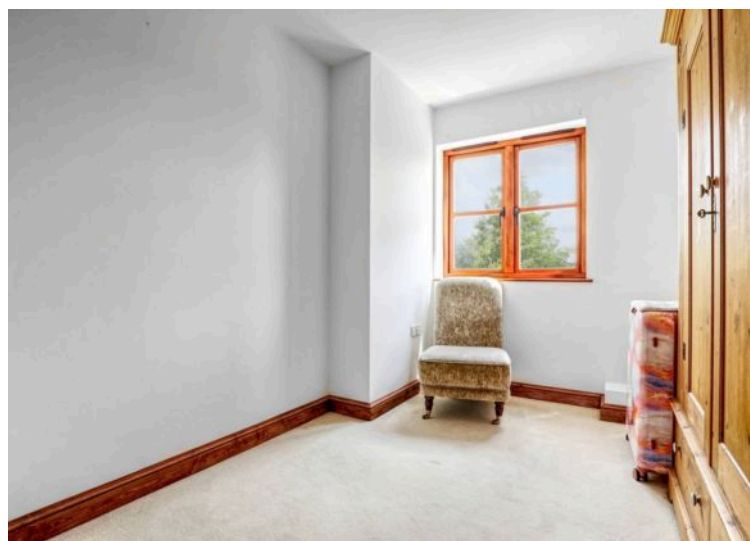
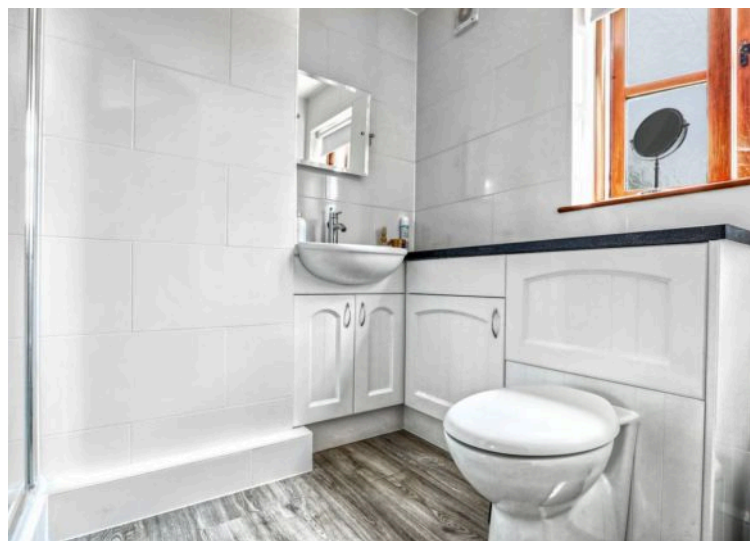
Bathroom

Garage

16' 1" x 17' 6" (4.90m x 5.34m)

Summerhouse





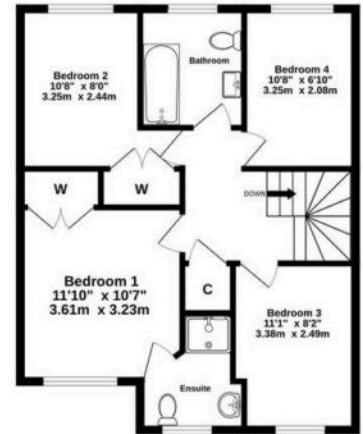


Ground Floor
979 sq.ft. (91.0 sq.m.) approx.



Garage
17'6" x 16'1"
5.34m x 4.90m

1st Floor
601 sq.ft. (55.8 sq.m.) approx.



TOTAL FLOOR AREA : 1580 sq.ft. (146.8 sq.m.) approx.

Whilst every attempt has been made to ensure the accuracy of the floorplan contained here, measurements of doors, windows, rooms and any other items are approximate and no responsibility is taken for any error, omission or mis-statement. This plan is for illustrative purposes only and should be used as such by any prospective purchaser. The services, systems and appliances shown have not been tested and no guarantee as to their operability or efficiency can be given.
Made with Metropix ©2025

You can include any text here. The text can be modified upon generating your brochure.