

24 The Chase, Coulsdon

£870,000 Freehold



haboodle

A Spacious Family Home on One of Coulsdon's Most Sought-After Roads, Beautiful Landscaped Garden, Short Walk to Coulsdon South Station.

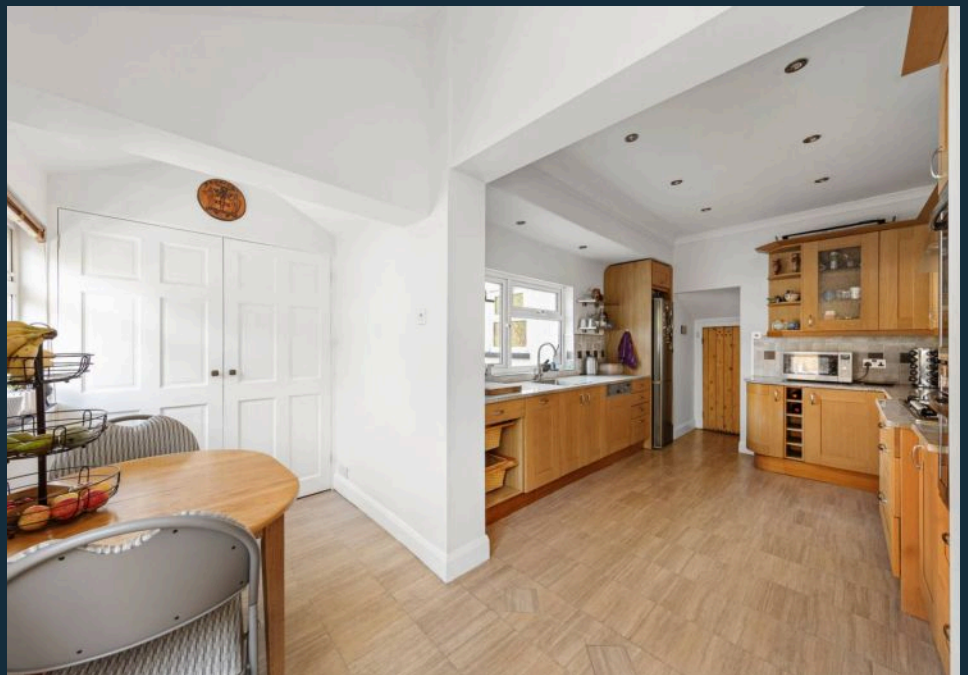
Set on the ever-popular, tree-lined The Chase, this five-bedroom semi-detached home combines generous living space with contemporary finishes and a versatile layout, making it perfect for modern family life.

Inside, a bright and welcoming hallway with wooden flooring leads to two elegant reception rooms. The front living room boasts a high ceiling, a striking fireplace, and a large bay window that floods the space with natural light. To the rear, the dining room opens directly onto the garden via French doors, creating a seamless flow between indoor and outdoor living spaces. The stylish kitchen, complete with integrated appliances, double oven, and ample worktop space, also benefits from French doors to the garden, ensuring the space feels light, open, and connected.

Upstairs, four well-proportioned bedrooms offer ample flexibility for families. The principal bedroom features built-in wardrobes and a



- › Five Bedrooms, Two Bathrooms
- › Four Upstairs Bedrooms Plus Ground Floor Annex/Bedroom
- › Principal Suite with Built-In Wardrobes & En-Suite
- › Two Reception Rooms with Fireplaces & Bay Window
- › Modern Kitchen with French Doors to Garden
- › Landscaped Garden with Decking & Patio
- › Off-Street Parking for Multiple Cars
- › Excellent Local Schools Nearby
- › Short Walk to Coulsdon South Station (22 mins to London)



The Chase, Coulsdon, CR5

Approximate Gross Internal Area = 175.4 sq m / 1888 sq ft

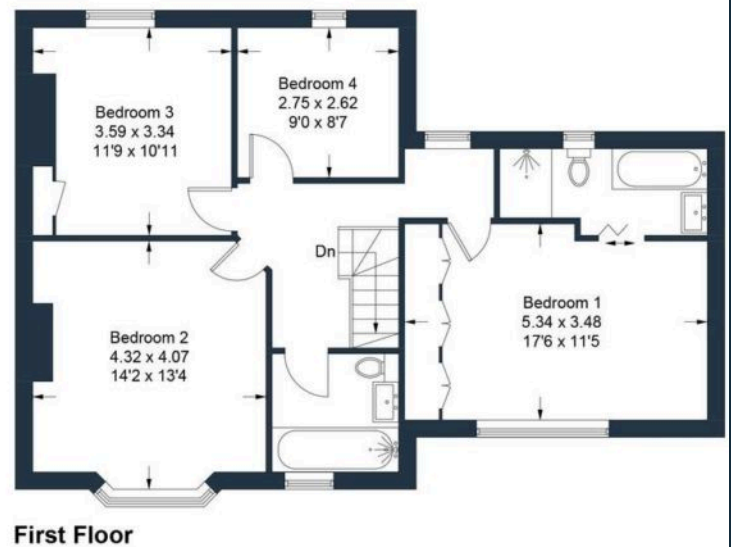


Illustration for identification purposes only, measurements are approximate, not to scale. Produced by Haboodle Estate Agents (ID1238024)



haboodle