



Whitehound, Thame - OX9 3EG

 **TIM RUSS**
& Company



Whitehound

Thame, Oxfordshire

- SPACIOUS 2 x DOUBLE BEDROOM HOUSE
- TWO BATHROOMS (ONE EN-SUITE)
- SOUGHT AFTER CENTRAL THAME LOCATION
- SET WITHIN A PRIVATE GATED COURTYARD
- MODERN FITTED KITCHEN
- WELL APPOINTED BATHROOMS
- SPACIOUS SITTING ROOM
- CLOSE TO THAME'S WONDERFUL FACILITIES, AMENITIES, RESTAURANTS & SHOPS
- SET WITHIN A PRIVATE GATED COURTYARD



Whitehound

Thame, Oxfordshire

Welcome to this charming 2- double bedroom house in the sought-after central location of Thame. As you step through the front door, you are greeted by a spacious and modern interior, boasting two well-appointed bathrooms including one en-suite. The property offers a comfortable lifestyle with a spacious sitting room perfect for relaxing or entertaining guests.

The house is set within a private gated courtyard, providing a sense of security and tranquillity - yet seconds from the centre of Thame. The modern fitted kitchen is a focal point, ideal for culinary enthusiasts to craft delicious meals.

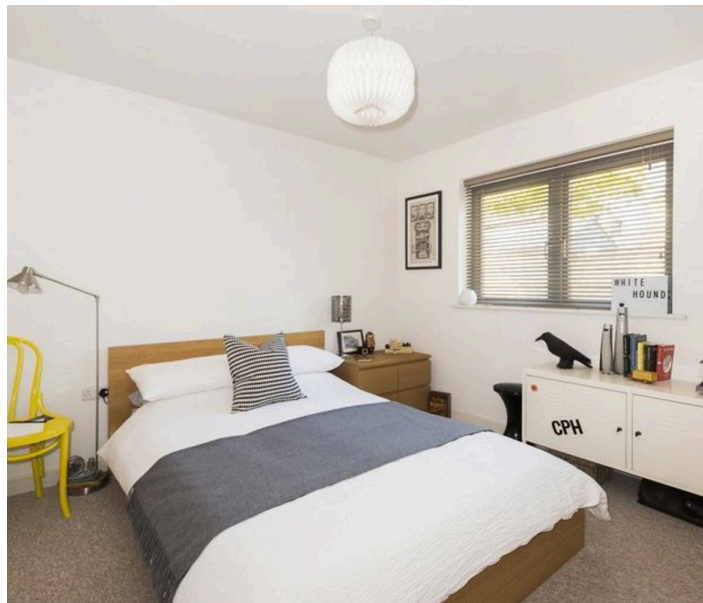
Located close to Thame's wonderful facilities, amenities, restaurants, and shops, convenience is at your doorstep. Whether you're seeking a peaceful retreat or a vibrant urban lifestyle, this rarely available house caters to both.

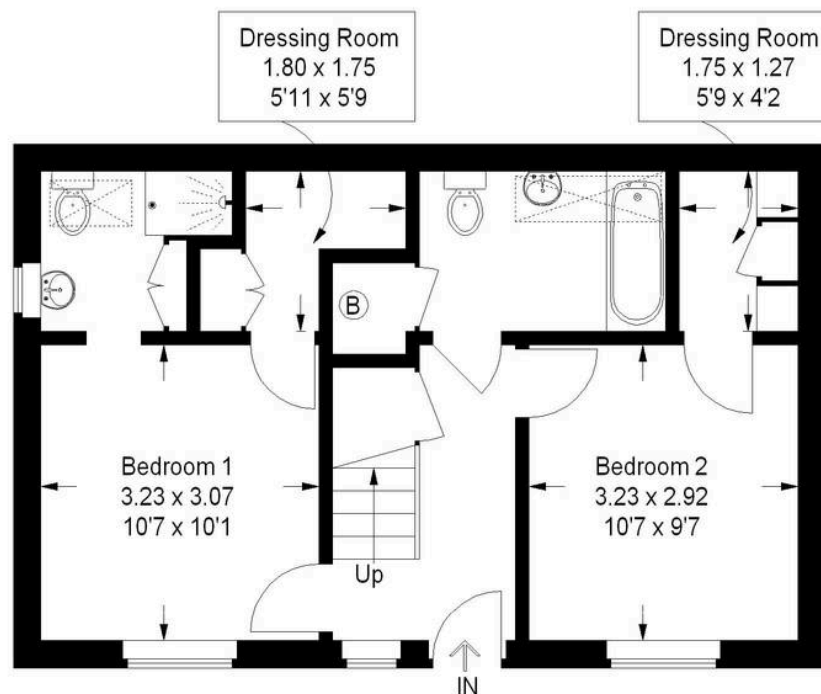
Don't miss the opportunity to make this property your home and enjoy all that central Thame has to offer. Schedule a viewing today.
(Previous images used)

Council Tax band: C. EPC: C

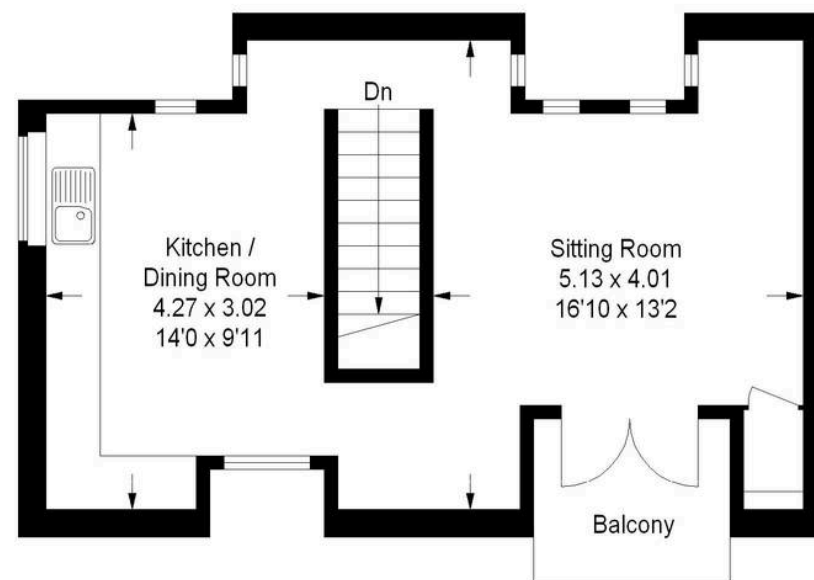
Tenure: Freehold

S/Charge: £1,989.00 Per Annum





Ground Floor



First Floor

6 Whitehound

Approximate Gross Internal Area
 Ground Floor = 42.9 sq m / 462 sq ft
 First Floor = 35.6 sq m / 383 sq ft
 Total = 78.5 sq m / 845 sq ft



This plan is for layout guidance only. Not drawn to scale unless stated. Windows and door openings are approximate. Whist every care is taken in the preparation of this plan, please check all dimensions, shapes and compass bearings before making any decisions reliant upon them.

© CJ Property Marketing Ltd

Produced for Tim Russ - Thame.

Tim Russ and Company

Tim Russ & Co, 112 High Street - OX9 3DZ

01844 217722 • thame@timruss.co.uk • timruss.co.uk/

By law we must verify every seller and buyer for anti-money laundering purposes.
 Checks are carried out by our partners at Lifetime Legal for a non-refundable £60 (incl. VAT) fee, paid directly to them.
 For more information please visit our website.

