



13 Ashmoor Gardens, Houghton

£585,000 Freehold

Detached Property • Immaculate, Spacious and Versatile Accommodation • 5 Bedrooms, 3 Reception rooms, 3 bath/shower rooms • Driveway and Garden • Desirable Cul-de-sac in Idyllic Countryside • Superb Frontal Views • No Onward Chain





Council Tax band: TBD

Tenure: Freehold

EPC Energy Efficiency Rating: B

EPC Environmental Impact Rating: B





Entry
5' 11" x 10' 6" (1.80m x 3.19m)

Hallway
17' 10" x 9' 5" (5.44m x 2.87m)

Study
7' 5" x 12' 5" (2.25m x 3.79m)

Lounge 1
24' 6" x 14' 6" (7.48m x 4.42m)

Kitchen/Diner
15' 1" x 25' 1" (4.61m x 7.65m)

Lounge 2
12' 0" x 16' 0" (3.67m x 4.87m)

Utility room
5' 10" x 7' 6" (1.78m x 2.29m)

Bathroom
6' 1" x 6' 4" (1.86m x 1.94m)

Landing
24' 10" x 10' 11" (7.58m x 3.32m)

Bedroom 1
15' 7" x 11' 2" (4.76m x 3.41m)



8' 1" x 11' 6" (2.46m x 3.53m)

Bedroom 2

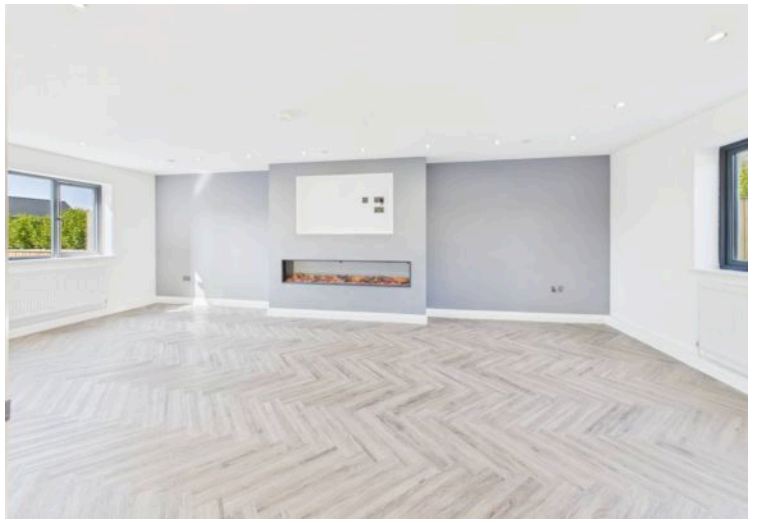




GARDEN



blackbear



13 Ashmoor Gardens

