

PS

Flat 5, Stoneleigh, 17 Martello Road South - BH13 7HQ

In Excess of £500,000

PS



Flat 5, Stoneleigh

17 Martello Road South, Canford Cliffs, Poole

Set just 350 metres from the golden sands of Canford Cliffs Beach, this immaculately maintained three-bedroom apartment offers bright and spacious living in a prime coastal village location. Situated on the second floor of the sought-after Stoneleigh development, the property benefits from a south-facing balcony, underground garage, and beautifully kept communal gardens.

- Spacious second floor apartment in central Canford Cliffs
- Three double bedrooms with built-in storage
- Two bathrooms plus guest WC
- South-facing balcony with tree-lined outlook
- Bright dual-aspect living and dining areas
- Underground garage and lift access
- Beautifully maintained communal gardens
- 350 metres to Canford Cliffs Beach
- Moments from local shops and restaurants
- Available for immediate occupation
- 1,356 sq.ft
- Council Tax Band: F £3,257.14
- Share of Freehold



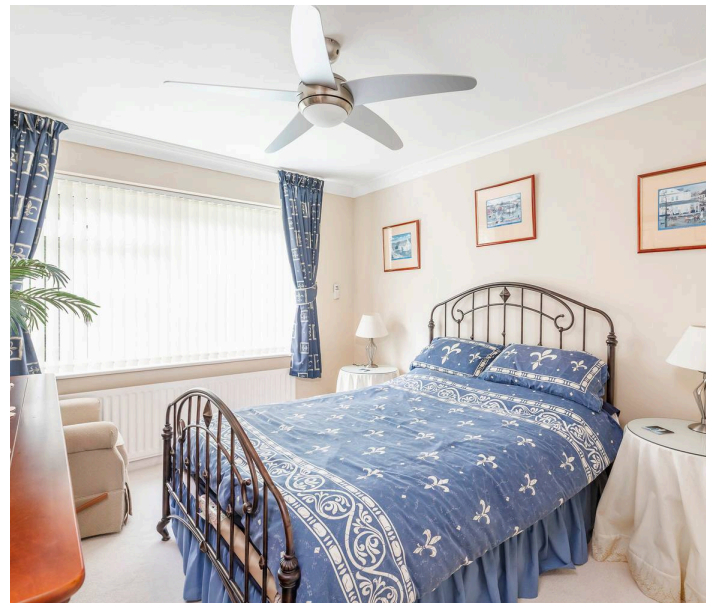
A welcoming entrance hall with multiple storage cupboards leads to the large living room, which opens onto a formal dining space and the sunny balcony with leafy views overlooking the lovely communal garden. The kitchen is well appointed with contemporary cabinetry and generous storage.

The apartment provides three generous double bedrooms, each with built-in wardrobes. The principal bedroom features a modern en-suite shower room, while a family bathroom, guest WC, and additional hallway storage complete the layout.

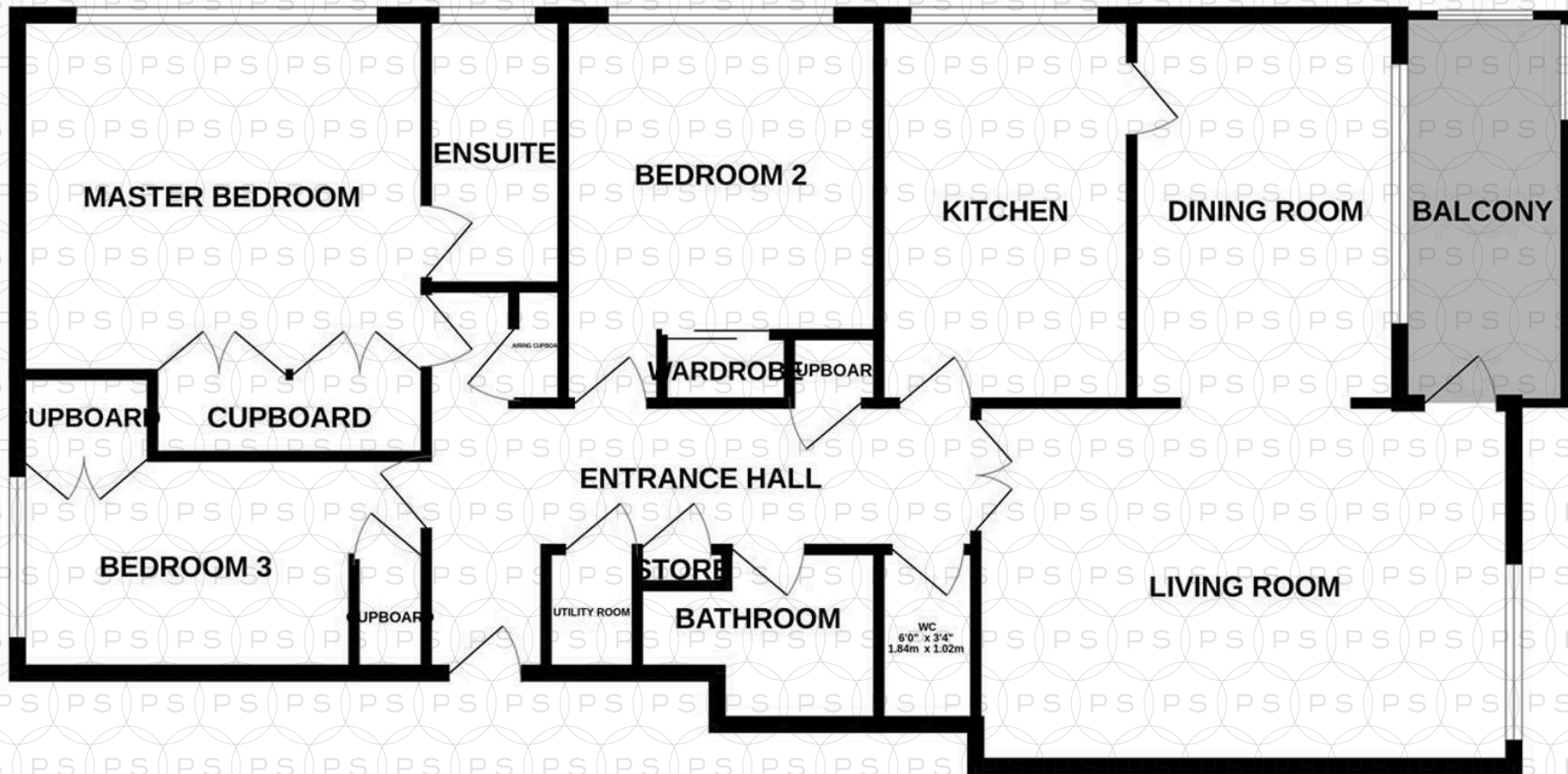
Stoneleigh is known for its well-managed communal areas and lift access throughout the building. The apartment also comes with two parking one being in the secure underground garage parking with additional bike storage.

Location

Perfectly positioned in the heart of Canford Cliffs Village, this apartment enjoys a short level walk to boutique shops, cafés, and local amenities. The award-winning sandy beach is just 350 metres away, offering direct access to the coastline. Poole Harbour and the famous Sandbanks Peninsula are nearby, ideal for sailing, paddleboarding, and coastal walks. Parkstone Golf Club is under one mile away, while both Poole and Bournemouth town centres are approximately two miles equidistant. London is easily reached via nearby train links, with Parkstone and Branksome stations providing direct services to Waterloo.



SECOND FLOOR





Philippa Sole Ltd

Philippa Sole 3A Springfield Road, Ashley Cross - BH14 0LG

01202 747999 • enquiries@philippasole.co.uk • www.philippasole.co.uk

All statements in these particulars are made without responsibility on the part of Philippa Sole Ltd or the vendor. Neither Philippa Sole Ltd nor anyone in its employment or acting on its behalf has the authority to make any representation or warranty in relation to this property, detailed survey or tested services and fittings. Room sizes are approximate.