



61 Five Ash Down, Uckfield

Uckfield

£525,000-£550,000

**MANSELL
McTAGGART**
— Trusted since 1947 —

61 Five Ash Down

Uckfield

£525,000-£550,000 A characterful and deceptively spacious two double bedroom semi-detached cottage occupying a pleasant plot of 0.11 of an acre enjoying a fine view to the rear over a neighbouring paddock.

Willow Cottage 61 Five Ash Down is a beautiful white character cottage having been significantly improved and enlarged by the current owners to provide impeccably finished living accommodation. The property lies well within its plot and is found in the centre of the village opposite the post office/general store.

The property is entered via a large porch with under floor heating which continues through to double aspect, generously size sitting room with woodburning stove. The kitchen/dining room is a particular feature of the property, completely open plan with a glass lantern and French doors opening to the rear garden. The kitchen has been beautifully fitted with a matching range of units, integrated appliances and a central island with a fireplace currently used to store logs.

Council Tax band: D

Tenure: Freehold





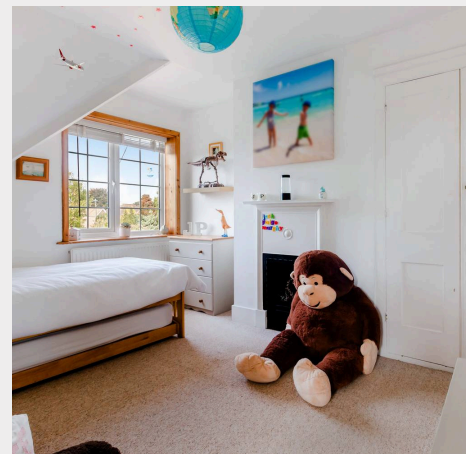
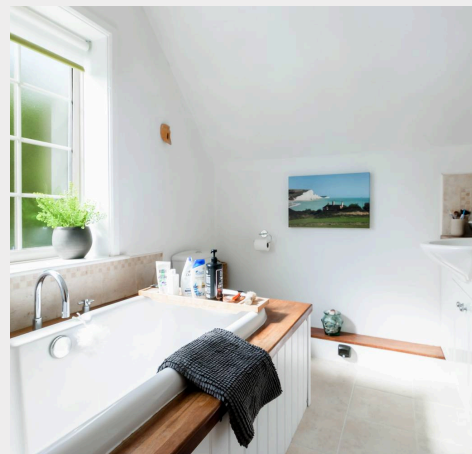
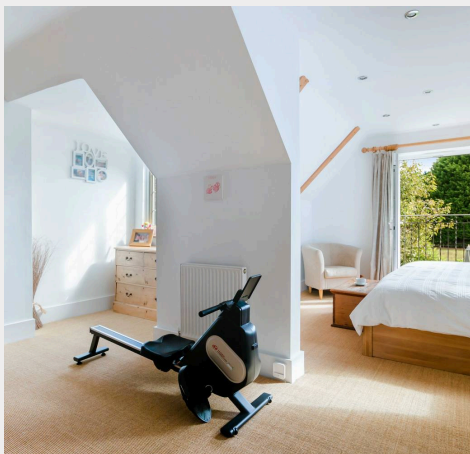
61 Five Ash Down

Uckfield

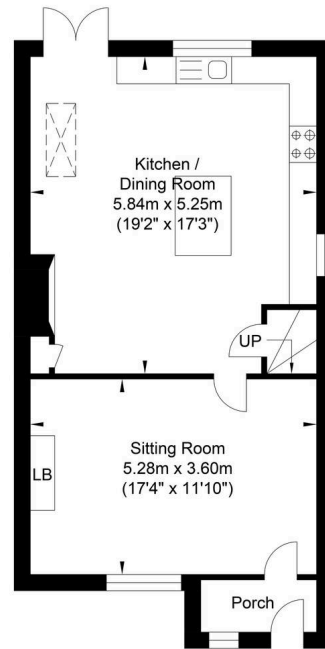
The first floor provides a landing, an impressive 19'2 x 13'4 principal bedroom with dressing area, Juliet balcony, and original fireplace. There is a second double bedroom, also featuring an original fireplace, and a family bathroom comprising a white suite and enclosed bath with overhead shower.

Outside, the front of the property is approached via a driveway which provides off street parking. A central pathway leads to the porch with a level lawn and seating terrace to one side. The rear garden is predominately laid to lawn with a seating terrace to the rear boundary which enjoys a good degree of seclusion and a fine outlook towards the neighbouring paddock.

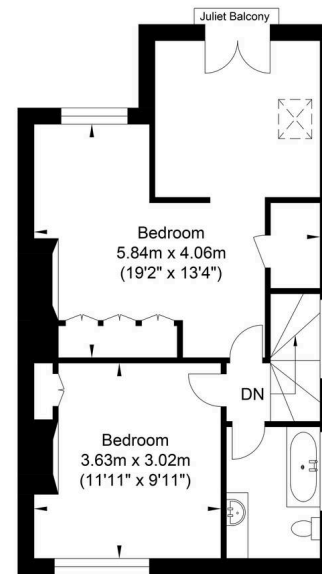
- A beautiful and seldom found character cottage centrally positioned in one of areas most desirable villages
- Occupying a stunning plot of 0.11 of acre
- Impeccably finished with a 19'2 x 13'4 open plan kitchen/dining room with central island
- Sitting room with wood burning stove
- Principal bedroom with dressing area
- Elegant bathroom suite
- Stunning garden with timber outbuilding and seating terrace enjoying a fine aspect across the neighbouring paddock



Five Ash Down



Ground Floor
Approximate Floor Area
566.61 sq ft
(52.64 sq m)



First Floor
Approximate Floor Area
505.25 sq ft
(46.94 sq m)

Approximate Gross Internal Area = 99.58 sq m / 1071.87 sq ft
Illustration for identification purposes only, measurements are approximate, not to scale.

Mansell McTaggart Uckfield

Mansell McTaggart, 204-206 High Street - TN22 1RD

01825 760770

uf@mansellmctaggart.co.uk

www.mansellmctaggart.co.uk/branch/uckfield

Consumer Protection from Unfair Trading Regulations 2008 We have not tested any apparatus, equipment, fixtures, fittings or services and so cannot verify that they are in working order or fit for purpose. You are advised to obtain verification from your solicitor or surveyor. References to the tenure of a property are based on information supplied by the seller. We have not had sight of the title documents and a buyer is advised to obtain verification from their solicitor. Items shown in photographs are not included unless specifically mentioned within the sales particulars, but may be available by separate negotiation.