



239 Lower Richmond Road, Owens Court
Richmond TW9



Guide Price £525,000



239 Lower Richmond Road

Flat 10, Owens Court, Richmond

A beautifully bright and spacious first-floor apartment in Owens Court, offering just over 880 sq ft of stylish, well-planned living space. The heart of the flat is the open-plan kitchen/reception, with a bespoke Richmond Kitchen fitted with Bosch and AEG appliances. Full-height windows flood the room with light and give the whole space a really open, airy feel — perfect for both everyday living and entertaining.

The principal bedroom comes with fitted wardrobes and its own en-suite shower room, while the second double also has built-in storage and easy access to a sleek family bathroom. There's a separate utility cupboard and plenty of storage throughout, keeping everything neat and practical.

The building itself is modern and well-kept, with lift access, secure entry and an allocated parking space.

- Two generous double bedrooms
- Allocated off-street parking & lift access
- Spacious open-plan kitchen/reception with floor-to-ceiling windows
- Excellent local schools including Marshgate & Holy Trinity
- Short walk to North Sheen Overground, Richmond & Kew Gardens





239 Lower Richmond Road

Flat 10, Owens Court, Richmond

Owens Court forms part of a well-regarded modern development on Lower Richmond Road, designed with both comfort and convenience in mind. Residents benefit from communal gardens, secure bike storage, parking, and access to a handy car club. The location is a real highlight — North Sheen station (Zone 3) is just around the corner for fast connections into London, while Richmond town centre is only a short stroll away with its buzzing mix of shops, cafés, restaurants and riverside pubs. For green space, you've got the best of both worlds with Kew Gardens and Richmond Park close by, perfect for weekend walks or bike rides. Council Tax band: D

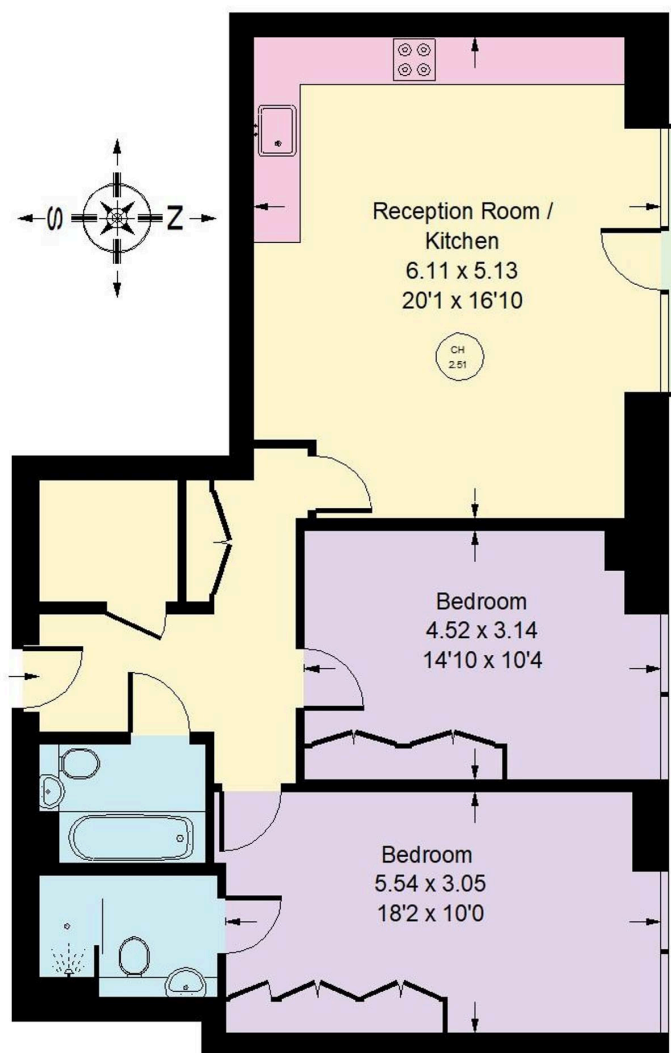
Tenure: Leasehold

EPC Energy Efficiency Rating: B

EPC Environmental Impact Rating: G

Lower Richmond Road, TW9

Approx. Gross Internal Area
82 sq m / 882 sq ft



First Floor

Whilst every attempt has been made to ensure the accuracy of the floor plan, measurements are approximate and not to scale.
No guarantee is given on the total square footage of the property quoted on the plan. Figures given are for guidance.
Plan is for illustration purposes only, not to be used for valuations.



Rigby & Marchant

020 3005 3235

dean@rigbyandmarchant.co.uk

www.rigbyandmarchant.co.uk/

