



Flat 3, 6 Harlaxton Drive, Nottingham



Harlaxton Drive, Nottingham

This beautifully finished apartment, full of character, set in a sought-after location only 20 minutes walk into the City Centre and a 5-minute walk to local shops. Briefly comprises; open plan living space, kitchen, bathroom, and 2 bedrooms. You could not feel more at home than in this unique, top-floor, loft-style apartment.

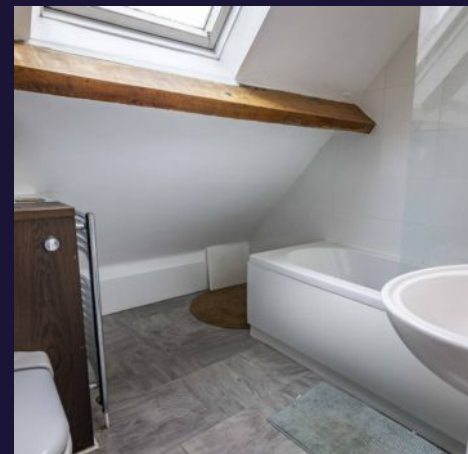
Virtual tour available

Call today to avoid disappointment!

This beautifully finished apartment, full of character, set in a sought-after location only 20 minutes walk into the City Centre and a 5-minute walk to local shops. Briefly comprises; open plan living space, kitchen, bathroom, and 2 bedrooms. You could not feel more at home than in this unique, top-floor, loft-style apartment.

Virtual tour available

Call today to avoid disappointment!





6 Harlaxton Drive, Nottingham

This beautifully finished apartment, full of character, set in a sought-after location only 20 minutes walk into the City Centre and a 5-minute walk to local shops. Briefly comprises; open plan living space, kitchen, bathroom, and 2 bedrooms. You could not feel more at home than in this unique, top-floor, loft-style apartment.

Council Tax band: C

Tenure: Leasehold

EPC Energy Efficiency Rating: D

EPC Environmental Impact Rating: D

- Character Apartment
- 2 Bedrooms
- Off-Road Parking
- Prime Location
- Fully Furnished



Hallway

Stairs leading to a private entrance. A small hallway then has further stairs to the living space. Featuring white painted walls and wooden floorboards.

Kitchen

A U- shaped kitchen decorated with a solid wood top, cream cabinets and brushed metal door handles. The kitchen features a washing machine, oven, hob and fridge freezer, all of which will be included. A boiler is also housed in wooden cupboard on a wall in the kitchen. In addition, there are 2 Velux windows, wood effect laminate flooring, white painted walls and exposed wood beam.

Dining Room

The living area's lower tier boasts space which could be used for dining or storage. Comprises wood effect laminate flooring, white painted walls and exposed wood beam.

Living Space

The higher tier has space for sofas, storage and includes the TV ariel. In addition, the room has a good-sized front window, welcoming light from outside, wood floorboards, white painted walls and exposed wood beam.





Bedroom 1

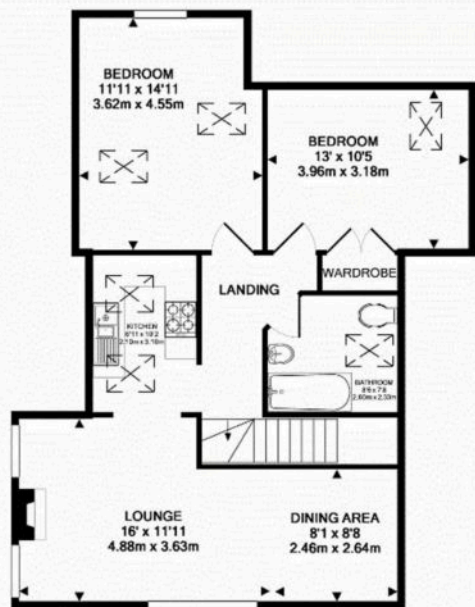
Enter into the master bedroom, through the white wooden door. The bedroom boasts built in cupboards and drawers on the right-hand side. With gas central heated radiator, 3 large windows overlooking the greenery outside, wood effect flooring, white painted walls and exposed wood beam.

Bedroom 2

Enter into the double bedroom through the white wooden door. The bedroom has built in wardrobes for maximum space and storage, slanted roof, 1 window, cream carpeted flooring, white painted walls and exposed wood beam.

Bathroom

Fitted with a white three-piece suite comprising; WC, wash hand basin, bath with shower over. The room benefits from a gas central heating towel radiator, Velux windows, grey tiled flooring, white painted walls and exposed wood beam.



TOP FLOOR
APPROX. FLOOR
AREA 795 SQ.FT.
(73.8 SQ.M.)





Comfort Estates

Comfort Estates, 47 Derby Road - NG1 5AW

0115 9338997 • info@comfortestates.co.uk • www.comfortestates.co.uk