



Victoria Road, N4 3SN
£1,900 pcm

**DAVID
ANDREW**

your
most
valuable
asset

Presenting a spacious split level one bedroom apartment arranged over the first & second floors of this period conversion, located just off Stroud Green road less than 15 minutes walk from Finsbury Park Station.

Boasting a generous 53 square meters (570 square feet) of living space, this apartment offers a seamless blend of comfort and convenience.

Features include a large semi open plan kitchen/reception room with beautiful bay windows overlooking the attractive architecture on Victoria Road. At the rear a sizeable double bedroom with built in wardrobes, a fully fitted kitchen, gas central heating and ample storage throughout.

Situated in an excellent location with independent restaurants, bars and shops and great transport links – 0.6 Miles to Finsbury Park Station. Crouch Hill (Overground) station is also a moment's walk away. Offered Furnished or Part Furnished, Available 7th of November.

Council Tax band: B / EPC Energy Efficiency Rating: D

- Spacious One-Bedroom Apartment
- Semi Open-Plan Living Space
- Fully Fitted Kitchen
- Comprising 53 sq mt / 570 sq ft
- Generous Storage Space
- Wooden flooring and Carpets Throughout
- Excellent Local Amenities
- Walking Distance to Finsbury Park and Crouch Hill Stations
- Offered Furnished or Part Furnished
- Available 7th of November







Victoria Road, N4

Approximate Gross Internal Area = 571 sq ft / 53.1 sq m

Reduced Headroom = 9 sq ft / 0.8 sq m

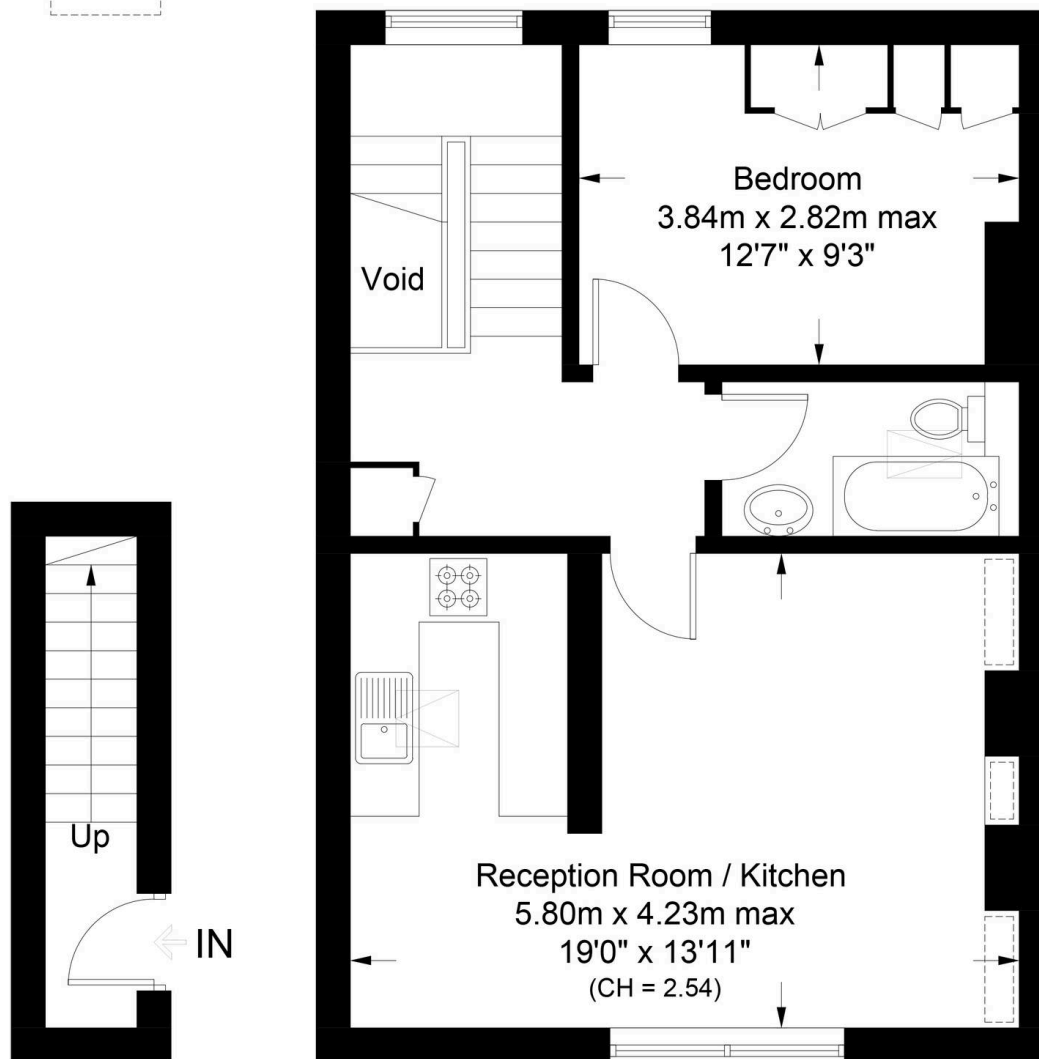
Total = 580 sq ft / 53.9 sq m

**DAVID
ANDREW**

your
most
valuable
asset



= Reduced headroom below 1.5m / 5'0



First Floor

Second Floor

scan to book
a viewing



**Certified
Property
Measurer**

This plan is for layout guidance only. Not drawn to scale unless stated. Windows and door openings are approximate. Whilst every care is taken in the preparation of this plan, please check all dimensions, shapes and compass bearings before making any decisions reliant upon them. (ID1246201)

**DAVID
ANDREW** your
most
valuable
asset

as been exercised in the
of these particulars,
out the property must not be
as representations of
fact. Prospective applicants
and rely upon their own
d those of professional
s. David Andrew Estates
bility for any error contained
in these particulars.

Archway Office

671 Holloway Road
London, N19 5SE

T (0)20 7619 3750

Highbury Office

90 Highbury Park
London, N5 2XE

T (0)20 7354 9111

Finsbury Park Office

167 Stroud Green Road
London, N4 3PZ

T (0)20 7281 2000

Property Management Office

235 Blackstock Road
London, N5 2LL

T (0)20 7354 9222



safeagent