

The Smithy Great Woodcote Drive, Purley

£750,000 Freehold



habboodle

Three Bedrooms | Detached Bungalow | Approx. 1345 sq ft | South-West Facing Garden | Private Road

Tucked away on one of Purley's most exclusive private roads, The Smithy is a charming and character-filled three-bedroom bungalow offering generous living space, a substantial garden, and a huge scope to tailor the home to your lifestyle.

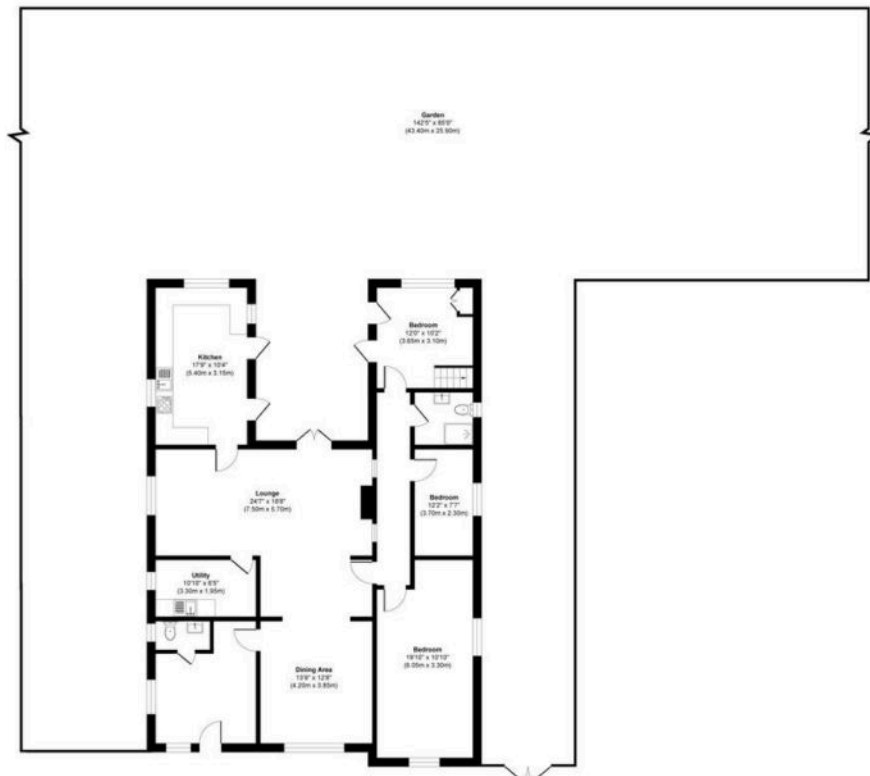
Set on a wide plot with a beautifully mature south-west facing garden, this home is as inviting as it is flexible. Inside, you'll find a spacious layout with a semi-open-plan dining and lounge area, featuring a striking open fireplace, perfect for cosy evenings. The recently updated kitchen is modern and well-equipped, while the sleek, newly fitted bathroom adds a touch of contemporary comfort.

All three bedrooms are well-proportioned, and the utility room offers added practicality. The layout works brilliantly as it is, but could be reconfigured or extended (subject to planning) to create an even more



- Detached Three-Bedroom Bungalow
- Approx. 1345 Sq Ft / 125 Sq M
- Huge South-West Facing Garden
- Positioned On A Sought-After Private Road
- Generous Lounge With Open Fireplace
- Separate Dining Area (Semi Open-Plan)
- Modern Kitchen And Recently Refurbished Bathroom
- Utility Room And Excellent Storage
- Potential To Extend Or Reconfigure (STPP)





Great Woodcote Drive, Purley, CR8

Approx. Gross Internal Area 1345sq ft / 125sq meters

Whilst every attempt has been made to ensure the accuracy of the floorplan shown, all measurements, positioning fixtures fittings and any other data shown are an approximate interpretation for illustrative purposes only and are not to scale. No responsibility is taken for any errors, omission, miss-statement or use of data show.

Plan produced by AR Net Media-www.arnetmedia.uk



haboodle