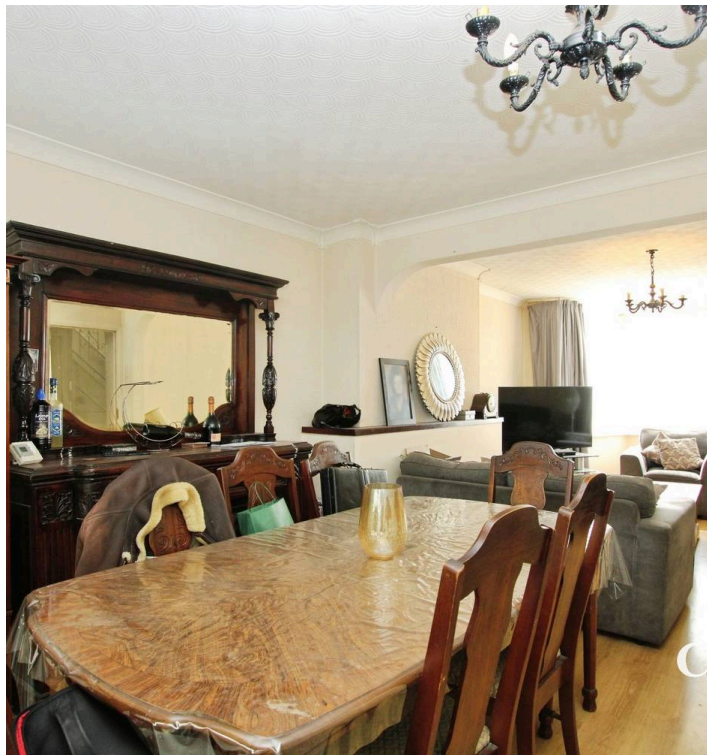




Cottage
Fields

21 Keswick Drive, Enfield – EN3 6NY
Enfield

Offers Over £500,000



21 Keswick Drive

Enfield, Enfield

Cottage Fields are delighted to present this charming and spacious three-bedroom semi-detached home, nestled in a popular EN3 location, brimming with character and opportunity.

Council Tax band: E

Tenure: Freehold

EPC Energy Efficiency Rating: D

EPC Environmental Impact Rating: D

- Spacious Open-Plan Lounge & Dining Area – Perfect for family living and entertaining
- Bright Conservatory Extension – Overlooking the garden, ideal as a second reception, office, or relaxation space
- Three Well-Proportioned Bedrooms – Including two generous doubles with great natural light
- Two Bathrooms – One on each floor, offering added convenience for families and guests
- Large Private Garden – A fantastic outdoor space with endless potential
- Detached Rear Garage with Rear Access – Great for storage, workshop use, or future development
- Generous Driveway for 3–4 Cars – Plus on-street parking available
- Close to Local Amenities, Schools & Stations – Everything you need within easy reach

