



39 Albert Road Alexandra Park, Nottingham – NG3 4JD

Guide Price **£250,000**

DavidJames
the estate agent



39 Albert Road Alexandra Park

Nottingham, Nottingham

Stylish 2-bed semi-detached house boasting open plan living spaces, a landscaped garden with summerhouse as well as off-street parking. Envidable cul-de-sac location a short commute from the City!

Council Tax band: B

Tenure: Freehold

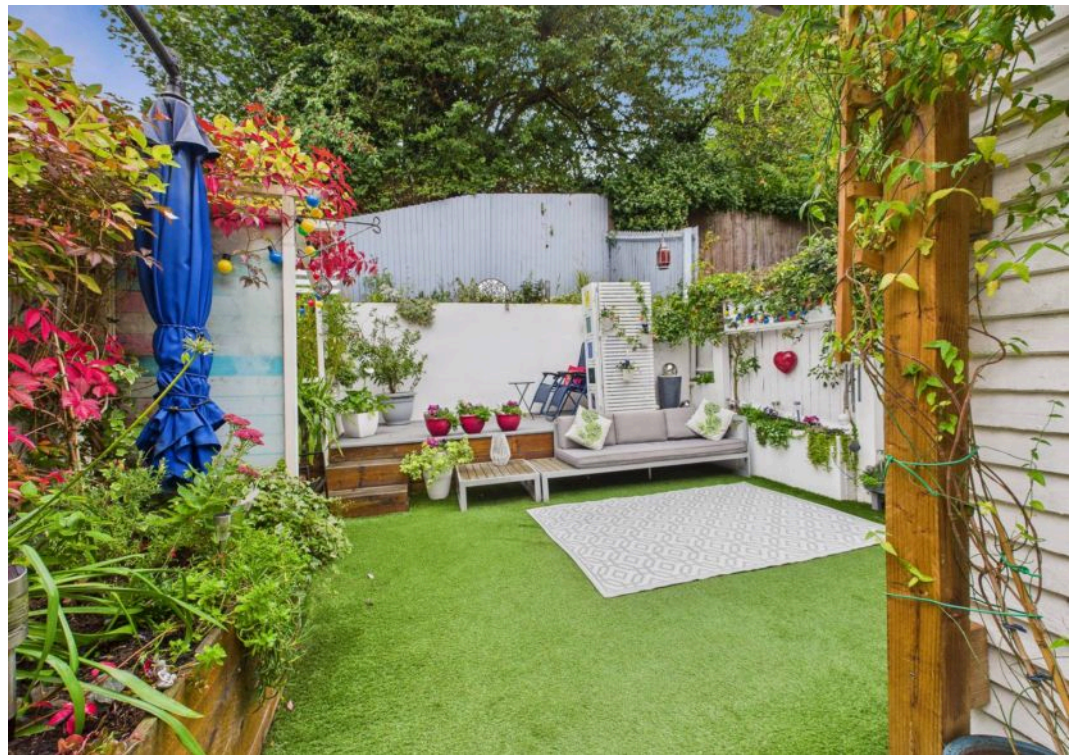
EPC Energy Efficiency Rating: B

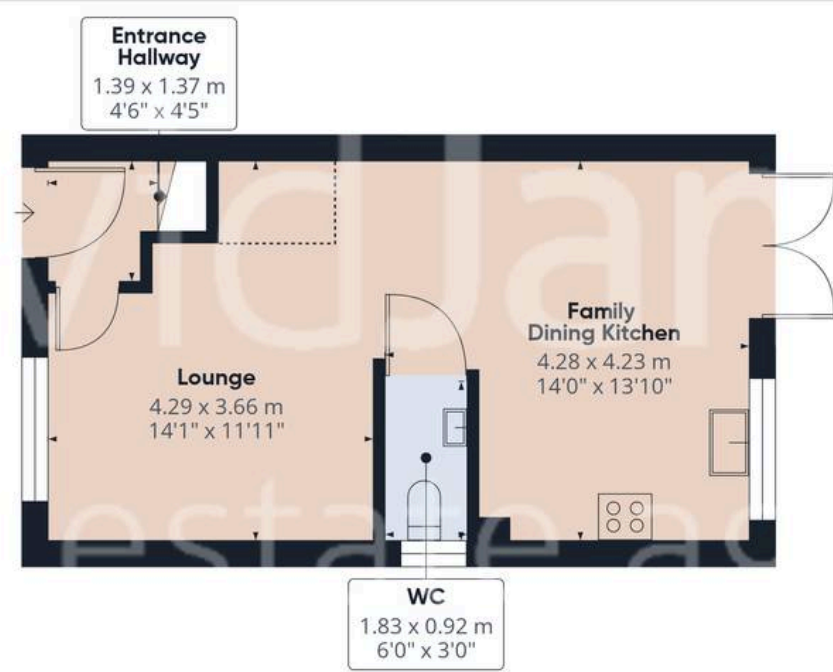
EPC Environmental Impact Rating: A

- Stylish semi-detached home in cul-de-sac position
- Wide block-paved driveway
- Lounge with wood finish flooring and large picture window flooding the room with natural light
- Stylish dining-kitchen with French doors to the rear garden, offering picture views and a seamless indoor-outdoor flow
- Ground floor cloakroom/WC
- Two well-proportioned bedrooms, including a main bedroom with a built-in wardrobe
- Modern family bathroom
- Landscaped rear garden with multiple seating zones, including a paved patio, pergola, and raised sun deck
- Charming summer house
- Prime Mapperley location









Floor 0 Building 1



Floor 1 Building 1

Approximate total area⁽¹⁾
64.8 m²
697 ft²
Reduced headroom
1.2 m²
13 ft²

(1) Excluding balconies and terraces

Reduced headroom
..... Below 1.5 m/5 ft

Calculations reference the RICS IPMS 3C standard. Measurements are approximate and not to scale. This floor plan is intended for illustration only.

GIRAFFE360



David James Estate Agents

David James Estate Agents, 45B Plains Road – NG3 5JU

0115 962 4213 • mapperley@david-james.com • www.david-james.com

These particulars are produced in good faith and are set out as a general guide only. Measurements are approximate and floor plans are for illustrative purposes only. Services have not been tested. We have established professional relationships with third-party suppliers for the provision of services to Clients, details of which can be found on the property listing page on our website.