



## Flat 6, Sandlands Court Stocks Lane, East Wittering

Guide Price £230,000



# Flat 6

Sandlands Court Stocks Lane, Chichester

An opportunity to own a modern one-bedroom apartment, ideal as a holiday home or investment property.

This bright, open-plan space features a stylish kitchen, modern finishes, and a neutral design. The property includes an EV charging point.

Conveniently located just a short walk from East Wittering beach and local shops, it offers easy access to amenities including local bus route to Chichester city centre.

In addition to its prime location and modern amenities, this apartment comes with the added benefit of no forward chain.

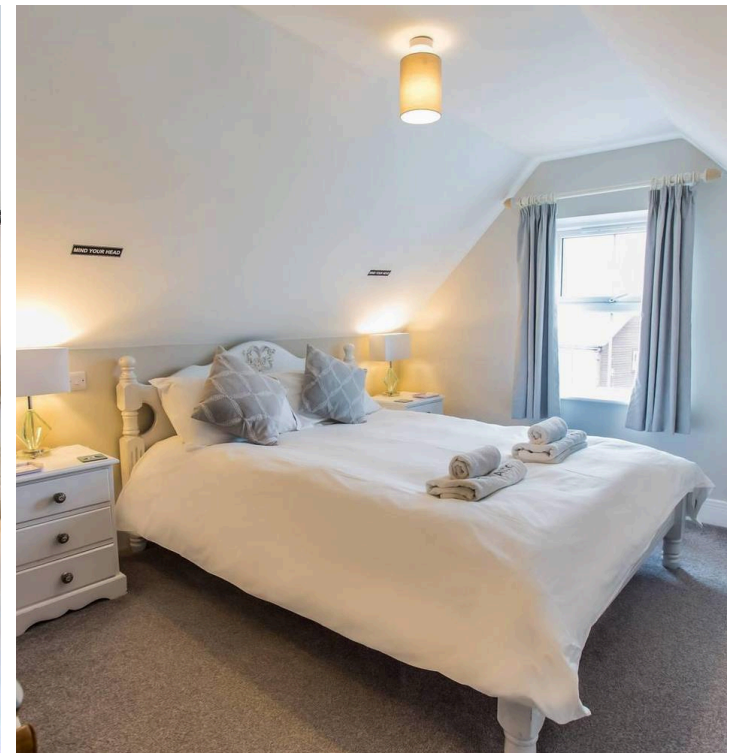
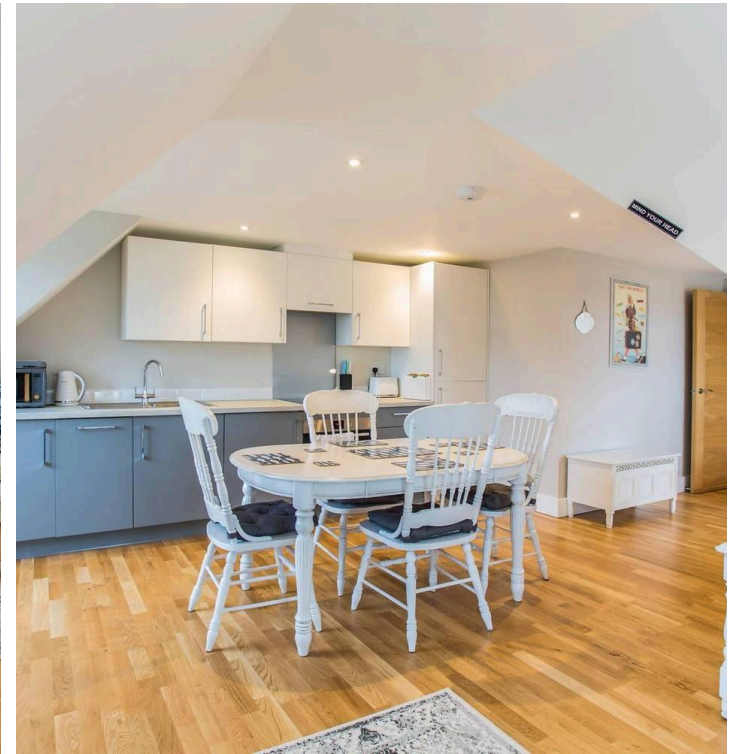
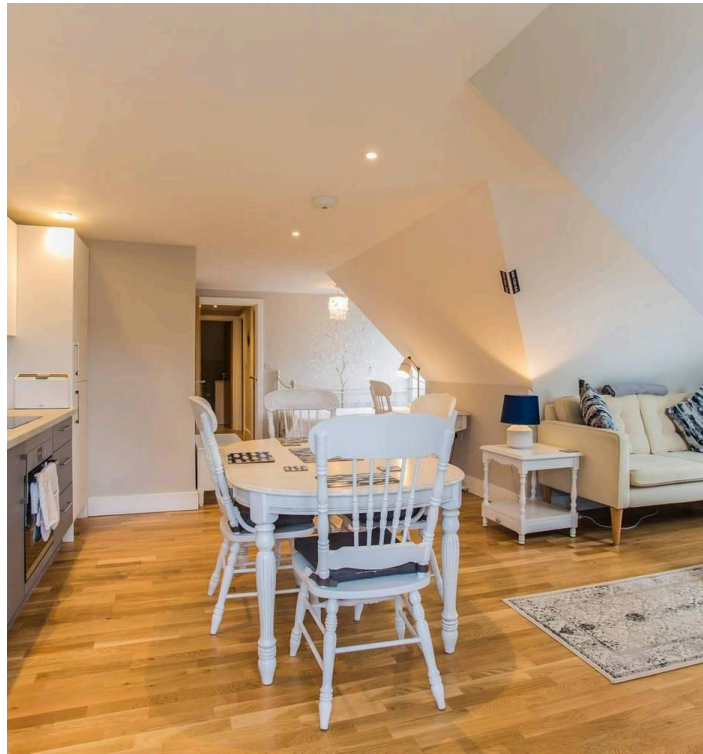
Council Tax band: B

Tenure: Leasehold

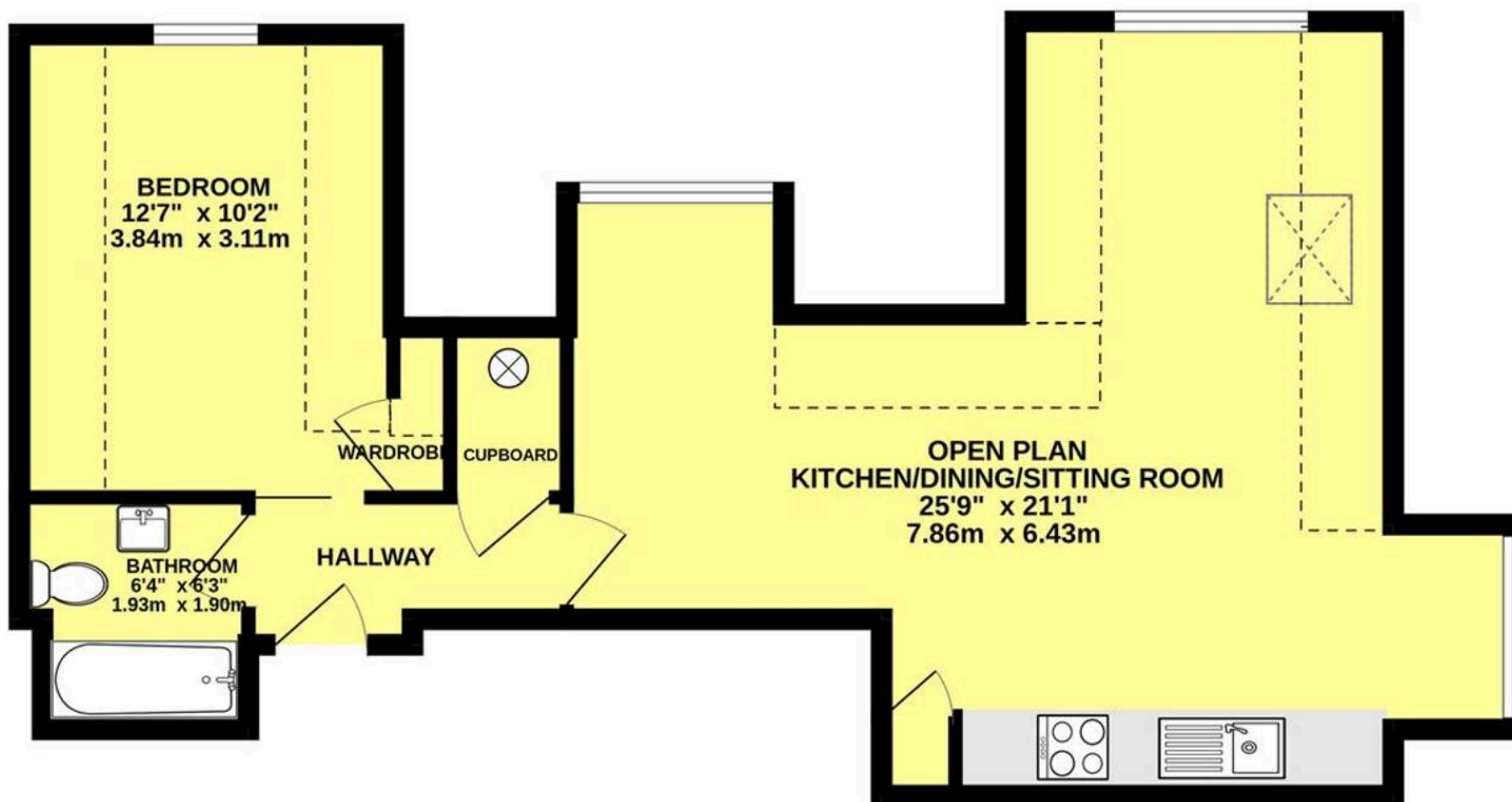
EPC Energy Efficiency Rating: B

EPC Environmental Impact Rating: B

- Modern One-Bedroom Apartment
- Recently Redeveloped
- Ideal Holiday Home Investment, Buy To Let or First Home
- Allocated Parking Space
- EV Charging Point
- Short walking distance to beach
- Village Centre Location
- No forward chain



GROUND FLOOR  
593 sq.ft. (55.1 sq.m.) approx.



SANDLANDS COURT, STOCKS LANE, PO20 8FZ

TOTAL FLOOR AREA : 593 sq.ft. (55.1 sq.m.) approx.

Whilst every attempt has been made to ensure the accuracy of the floorplan contained here, measurements of doors, windows, rooms and any other items are approximate and no responsibility is taken for any error, omission or mis-statement. This plan is for illustrative purposes only and should be used as such by any prospective purchaser. The services, systems and appliances shown have not been tested and no guarantee as to their operability or efficiency can be given.  
Made with Metropix ©2024





## Henry Adams - East Wittering

Henry Adams LLP, 14 Shore Road, East Wittering - PO20 8DZ

01243 672721

[eastwittering@henryadams.co.uk](mailto:eastwittering@henryadams.co.uk)

[www.henryadams.co.uk/](http://www.henryadams.co.uk/)

Agents Note - Our particulars are for guidance only and are intended to give a fair overall summary of the property. They do not form part of any contract or offer, and should not be relied upon as a statement or representation of fact. Measurements, areas and distances are approximate only. Photographs may include lifestyle shots and pictures of local views. No undertaking is given as to the structural condition of the property, or any necessary consents or the operating ability or efficiency of any service, system or appliance. Please ask if you would like further information, especially before you travel to the property.