



**The Pines, Le Mont Sohier, St Brelade**  
Asking £3,500 pcm

**BROADLANDS**  
FINDING YOU A HOME SINCE 1972



# The Pines,, Le Mont Sohier

St Brelade, Jersey

- Detached beachside home in popular location
- Well presented throughout
- Open plan kitchen/diner/lounge overlooking St Brelades
- Three double bedrooms (one en suite)
- Exceptional decked balcony and seating area
- West facing sunny garden
- Single garage and one parking space
- Minutes from St Brelade's Bay and Ouaisne
- Fully furnished
- Available October 2025 - May 2026 as a winter let
- Contact [rentals@broadlandsjersey.com](mailto:rentals@broadlandsjersey.com)





# The Pines,, Le Mont Sohier

St Brelade, Jersey

Introducing a stunning three bedroom detached beachside home, located in a sought after area, this property boasts a prime location minutes away from the picturesque St Brelade's Bay and Ouaisne. Elegantly presented throughout, this residence features an inviting open-plan kitchen/diner/lounge area with captivating views overlooking St Brelades. The property offers three generously sized double bedrooms, including one en suite and house bathroom, providing comfortable living spaces for occupants. Moreover, a remarkable decked balcony and seating area offer a tranquil spot for outdoor relaxation.

Noteworthy qualities of this residence include a west-facing sunny garden, a single garage, and an additional parking space. Available for winter let from October 2025 to May 2026, this property presents a unique opportunity for those seeking a temporary home in this coveted locale.







### **Living**

Fully fitted kitchen with integrated appliances opening onto dining room/living area overlooking St Brelades.

### **Sleeping**

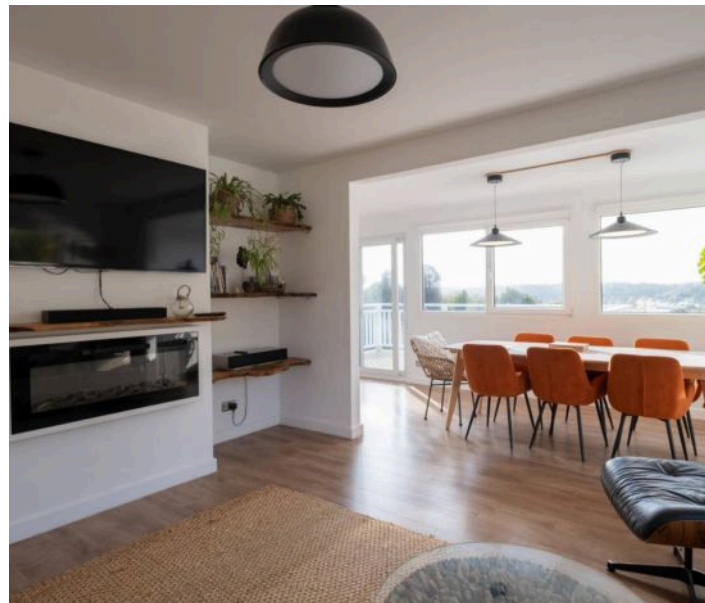
Three generously sized double bedrooms, one en suite and house bathroom.

### **Outside**

West facing decked balcony and garden/seating area. One parking space and single garage.

### **Services**

All mains drains, water. Electric heating.











## Broadlands

Broadlands Estates, Library Place - JE2 3NL

01534 880770 • [enquiries@broadlandsjersey.com](mailto:enquiries@broadlandsjersey.com) • [www.broadlandsjersey.com/](http://www.broadlandsjersey.com/)

# BROADLANDS

FINDING YOU A HOME SINCE 1972