



8 The Green, Tenby

£349,950 Freehold

Terraced Property • Beautiful Blend of Character and Modern Living • Short Walk from Local Amenities and Beaches
• Large Tiered Garden • Perfect Family Home





Blackbear are delighted to present 8, The Green to the open market; a beautiful terraced property which is enviably positioned in the heart of the Pembrokeshire town of Tenby. With accommodation comprising of: 3 bedrooms, 2 bathrooms, lounge, kitchen/diner, utility room - 8, The Green is a great opportunity to reach the market whether you are looking for your dream family home or an escape to Pembrokeshire. We highly recommend viewing!

As you enter the property you immediately notice the comfort of a loving family home. Downstairs you will find a lounge bursting with character features including a log burner, followed by a fantastic open kitchen/dining area. At the rear of the property you will find a convenient utility room along with downstairs bathroom. Upstairs, a well-lit landing area connects the first floor of the accommodation together. Here you will find 3, good-sized double bedrooms and a family bathroom with the master bedroom providing seamless access to the outdoor decking area.





Externally, the home benefits from a substantial rear garden with several levels - whether you are looking for a space for green fingers, hosting BBQs or to simply enjoy the outdoors, this garden is perfect for you! 8, The Green is located within the heart of the coastal town of Tenby meaning that all of its amenities are just a short walk away. With permit parking close by, transport links are easily accessible proving access to the wider Pembrokeshire area and beyond.

Tenure: Freehold

Local Authority: Pembrokeshire County Council

Services: We are advised that all mains services are connected

EPC: C

Council Tax band: D





Hallway

6' 0" x 13' 3" (1.83m x 4.04m)

Living Room

13' 7" x 13' 1" (4.15m x 4.00m)

Kitchen/Living Area

19' 3" x 9' 3" (5.88m x 2.82m)

Kitchen

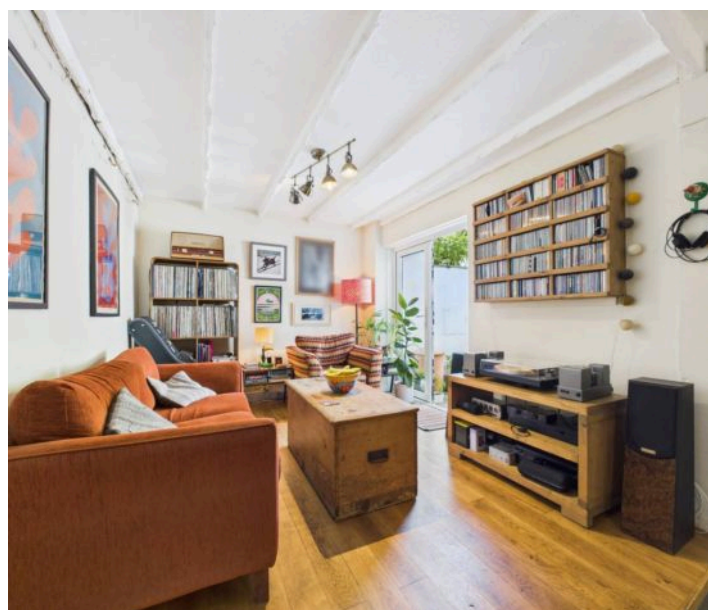
11' 1" x 7' 3" (3.37m x 2.22m)

Utility Room

5' 2" x 5' 7" (1.57m x 1.71m)

Downstairs Bathroom

5' 5" x 5' 5" (1.66m x 1.66m)





Landing

2' 10" x 7' 8" (0.87m x 2.34m)

Bedroom 1

9' 9" x 13' 4" (2.98m x 4.06m)

Bedroom 2

8' 1" x 10' 1" (2.47m x 3.07m)

Bedroom 3

10' 9" x 9' 4" (3.28m x 2.84m)

Bathroom

6' 11" x 9' 1" (2.11m x 2.78m)



