

## 7 Boot & Shoe Close, Crundale

£185,000 Freehold

Terraced Home • Immaculate Presentation • Perfect First/Family Home • Low Maintenance Garden • Surprisingly Spacious Accommodation • 2 Bedrooms, Lounge, Kitchen/diner, Bathroom, Wc





Council Tax band: TBD

Tenure: Freehold

EPC Energy Efficiency Rating: C

EPC Environmental Impact Rating: B







#### Hallway

4' 0" x 13' 4" (1.21m x 4.06m)

#### Kitchen

14' 4" x 10' 4" (4.38m x 3.15m)

#### WC

3' 11" x 5' 4" (1.20m x 1.62m)

#### Living Room

19' 9" x 9' 11" (6.01m x 3.01m)

#### Landing

14' 2" x 3' 1" (4.31m x 0.95m)

#### Bedroom 1

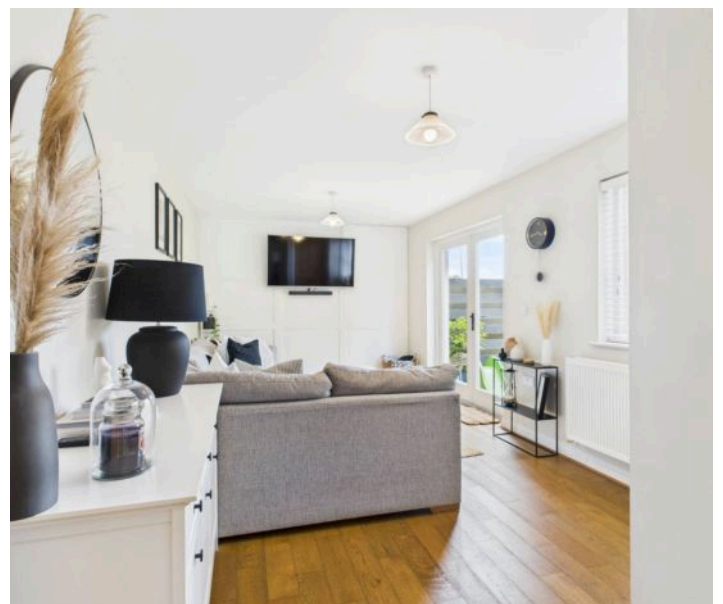
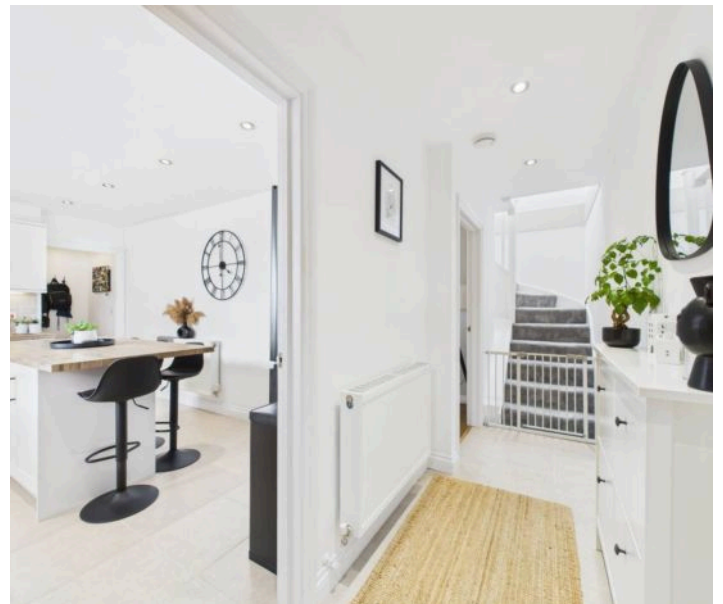
19' 7" x 9' 4" (5.98m x 2.85m)

#### Bedroom 2

9' 0" x 10' 8" (2.74m x 3.24m)

#### Bathroom

7' 2" x 7' 1" (2.18m x 2.17m)







GARDEN





