



Station Meadow, Bourton-On-The-Water



Situated within walking distance of the ever-popular village centre of Bourton-on-the-Water, this three-bedroom semi-detached bungalow offers comfortable and versatile living in a highly sought-after location.

Upon entering, you are welcomed into a spacious hallway that leads to the main living areas. To the right, the well-appointed shaker style kitchen provides benefits from integrated appliances (oven, hob and fridge/freezer), wooden worktops and the sink looks out onto the rear garden. Straight ahead, the bright and inviting living room features double sliding doors opening into a conservatory, which enjoys views over the rear garden. To the left of the hallway are the three bedrooms, two doubles and a single, the principal bedroom benefits from an en-suite shower room and built-in storage, while the single bedroom also features a built-in cupboard.

Outside, the property enjoys a wrap-around garden filled with mature shrubs and colourful bedding, along with lawned and patio areas providing multiple spots for outdoor dining and leisure.

Further benefits include a single garage and allocated parking for two cars, located just a short walk from the property.

EPC: C

Council Tax Band: C

Tenure: Freehold

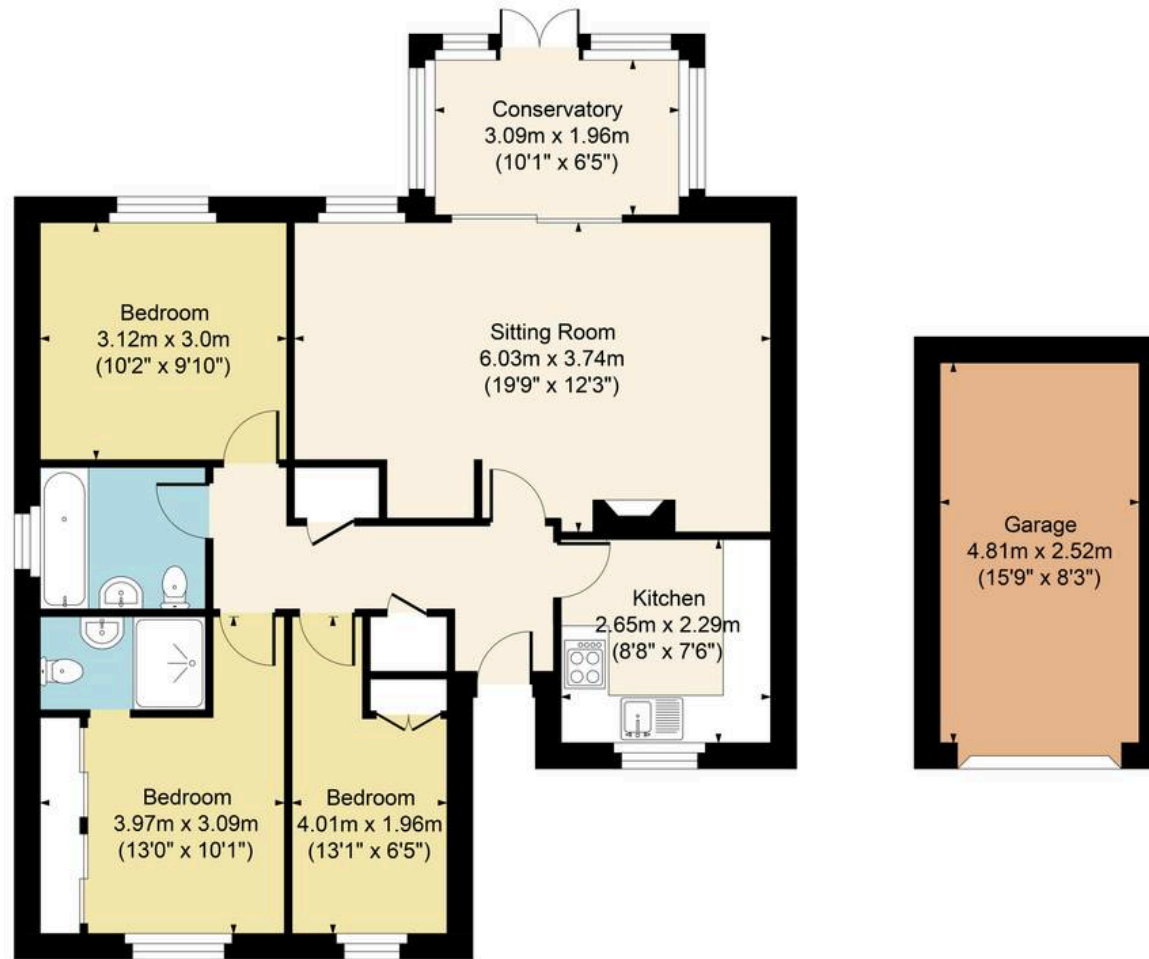
What3Words: ///diverting.stole.another

Bourton on the Water is a village situated in the heart of the North Cotswolds - a popular tourist destination, a village of enormous character and appeal, with period Cotswold stone houses and shops flanking the shallow River Windrush that runs through the town centre, which have a range of amenities. As well as the large range of amenities there are multiple sports clubs.





Main House Approx. Gross Internal Area:- 78.40 sq.m. 844 sq.ft.
 Garage Approx. Gross Area:- 12.12 sq.m. 130 sq.ft.
 Total Approx. Gross Area:- 90.52 sq.m. 974 sq.ft.



Ground Floor

Garage

FOR ILLUSTRATIVE PURPOSES ONLY-NOT TO SCALE
 The position & size of doors, windows, appliances and other features are approximate only.
 □ □ □ Denotes restricted head height
www.dmlphotography.co.uk