



Finsbury Park Road, London

Asking price £550,000

**DAVID
ANDREW**

your
most
valuable
asset

Finsbury Park Road, London

Spacious two-bed apartment, situated on the top floors of an attractive period conversion. With an internal floor area of 655sqft/60sqm this charming home is arranged over two levels, ensuring added peace and privacy.

A bright reception room spans the full width and with several skylight windows throughout the property, it has an abundance of natural light. A separate generously sized kitchen is perfect for culinary adventures. Both double bedrooms provide ample space for relaxation and the main bathroom is complemented by a second roomy WC cloakroom.

Located on Finsbury Park Road, one of the best & quietest streets in the area, is a short walk for the shops and cafes of Finsbury Park and Highbury. The green spaces of Clissold Park, Woodberry Wetlands and Finsbury Park itself are also within easy reach. Excellent transport links include Zone 2 Victoria/Piccadilly lines, Overground, National Rail, and regular local bus routes.

Council Tax band: D

Tenure: Share of Freehold

EPC Energy Efficiency Rating: D

EPC Environmental Impact Rating: D

- Two Bedrooms
- Top Floor
- Period Conversion
- Great Location
- Open Plan
- Close to Clissold Park
- Modern Kitchen



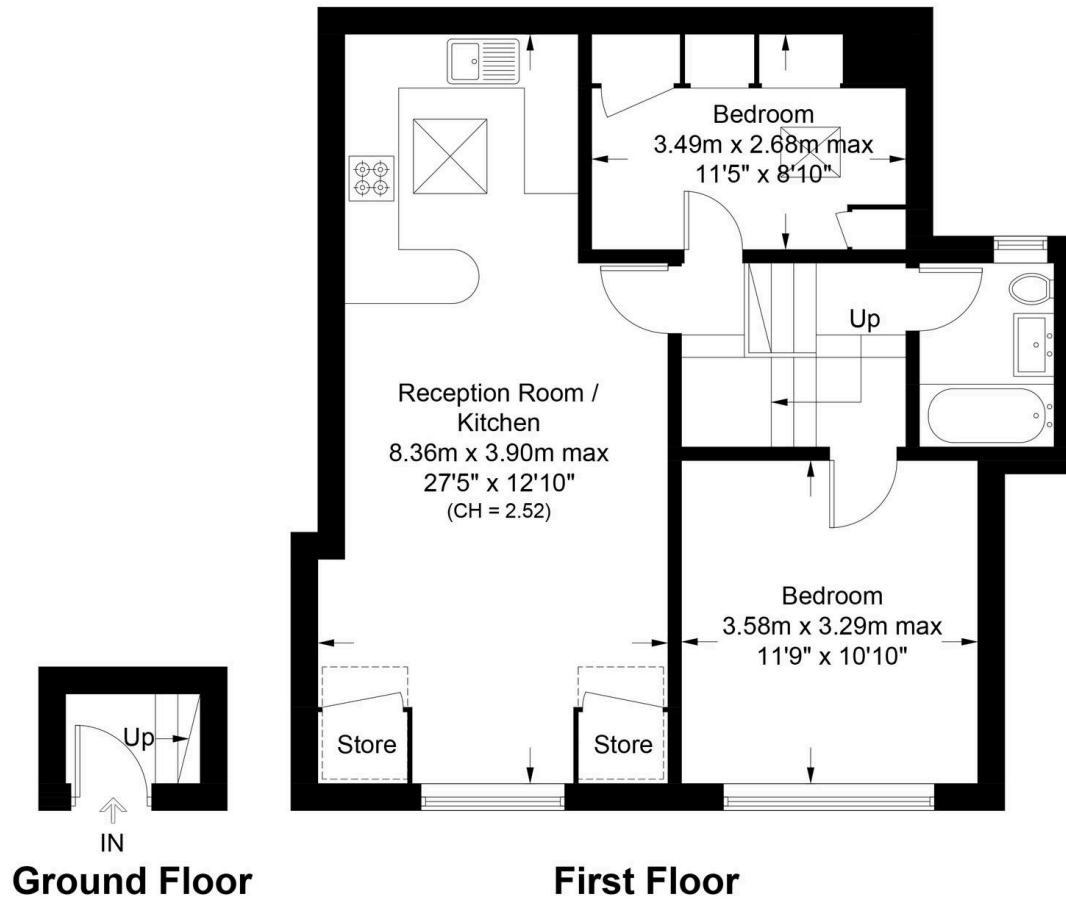




Finsbury Park Road, N4

Approximate Gross Internal Area = 626 sq ft / 58.2 sq m
(Excluding Reduced Headroom)
Reduced Headroom = 29 sq ft / 2.7 sq m
Total = 655 sq ft / 60.9 sq m

DAVID ANDREW | your most valuable asset



Archway Office

671 Holloway Road
London, N19 5SE

T (0)20 7619 3750

Highbury Office

90 Highbury Park
London, N5 2XE

T (0)20 7354 9111

Finsbury Park Office

167 Stroud Green Road
London, N4 3PZ

T (0)20 7281 2000

Property Management Office

235 Blackstock Road
London, N5 2LL

T (0)20 7354 9222

scan to book a viewing



Certified Property Measurer

This plan is for layout guidance only. Not drawn to scale unless stated. Windows and door openings are approximate. Whilst every care is taken in the preparation of this plan, please check all dimensions, shapes and compass bearings before making any decisions reliant upon them. (ID1168314)



as been exercised in the of these particulars, out the property must not be as representations of fact. Prospective applicants and rely upon their own i those of professional s. David Andrew Estates ility for any error contained in these particulars.

