



13 Cromwell Crescent, Lambley - NG4 4PJ

Guide Price £325,000



13 Cromwell Crescent

Lambley, Nottingham

Beautifully-presented 3 bed semi-detached home in the highly sought after village of Lambley! Open plan lounge/dining room, stunning kitchen and multi-vehicle parking alongside a generous garden!

Council Tax band: C

Tenure: Freehold

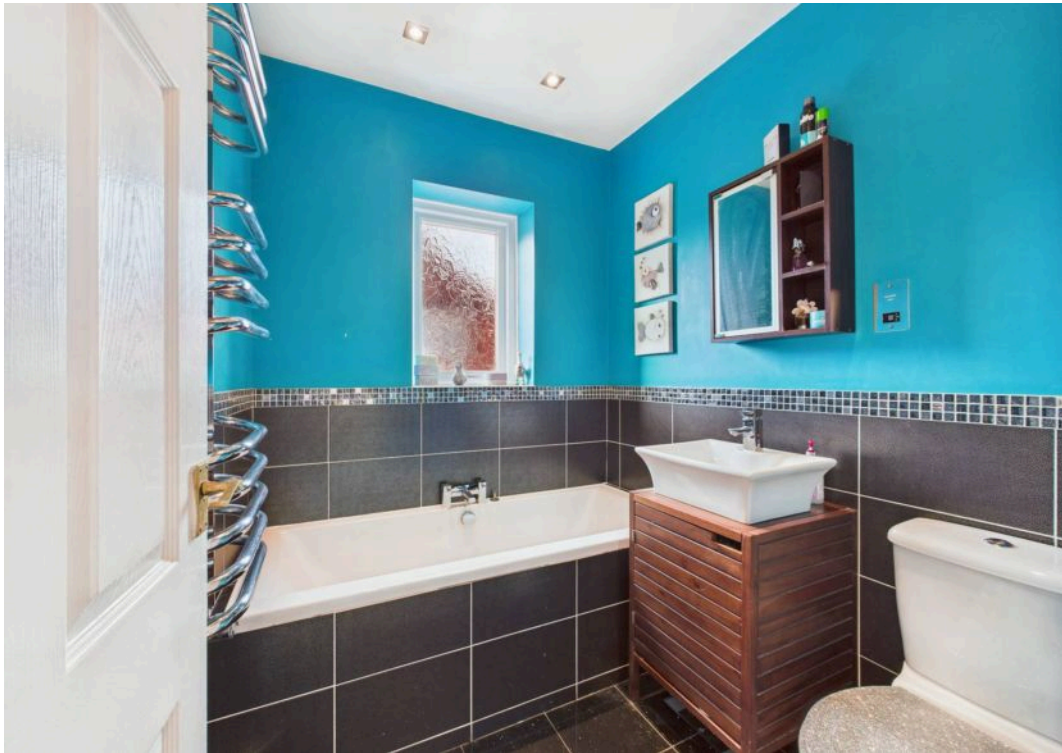
EPC Energy Efficiency Rating: C

EPC Environmental Impact Rating: D

- Beautifully-presented semi-detached family home
- Sought-after Lambley village location
- Open plan lounge/dining room with wood flooring and a wood-burning stove
- Welcoming porch and entrance hall with useful understairs storage
- Stunning contemporary kitchen with a feature central island, granite worktops and range cooker
- Convenient downstairs WC and separate utility/laundry room
- Three first floor bedrooms
- Well-appointed family four-piece family bathroom (including both a bath and separate shower cubicle)
- Generous and enclosed rear garden with lawn and patio seating space
- Multi-vehicle driveway and garage









Floor 0



Floor 1

Approximate total area⁽¹⁾

90 m²

968 ft²

Reduced headroom

0.2 m²

2 ft²

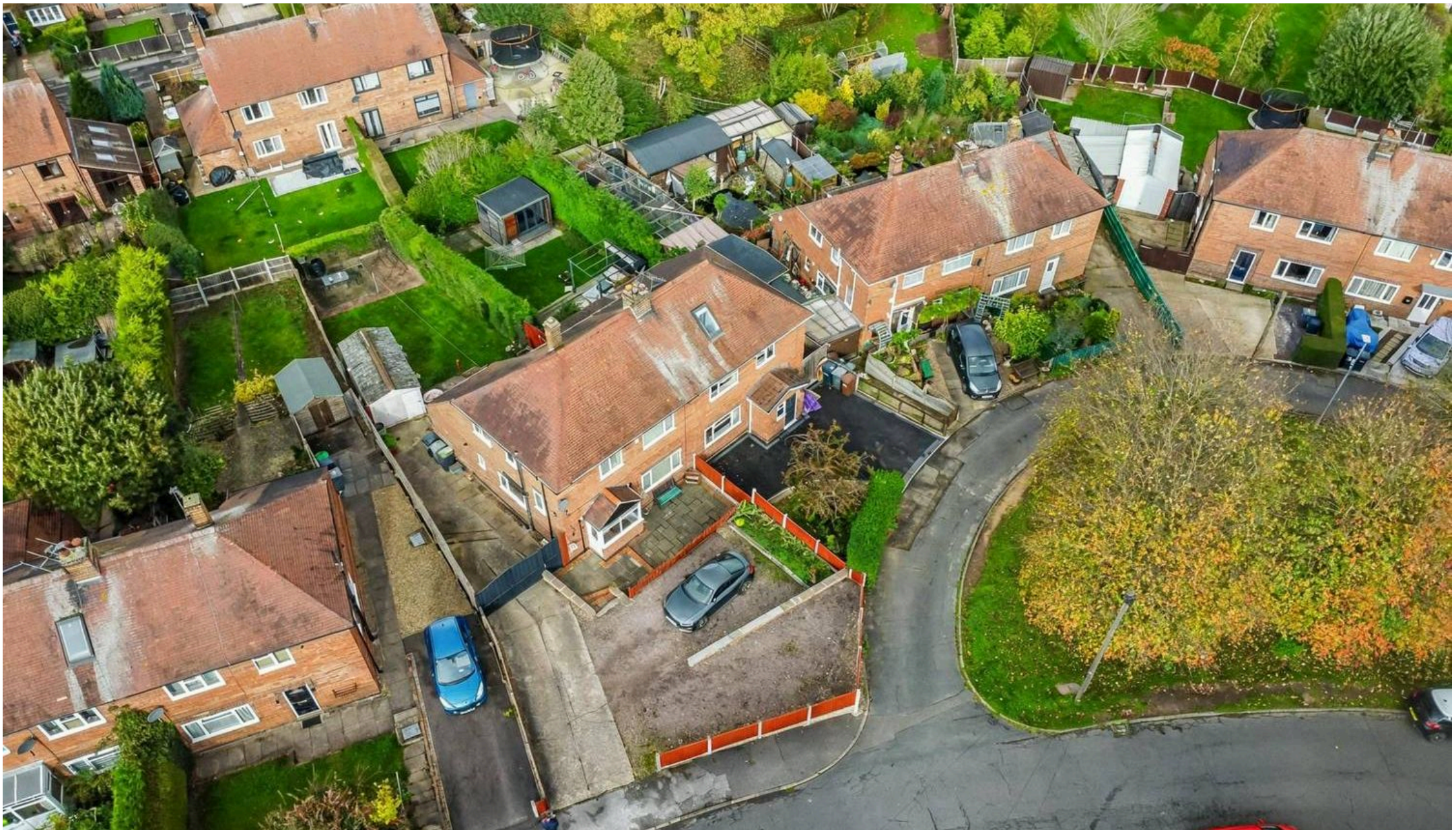
(1) Excluding balconies and terraces

Reduced headroom

----- Below 1.5 m/5 ft

Calculations reference the RICS IPMS 3C standard. Measurements are approximate and not to scale. This floor plan is intended for illustration only.

GIRAFFE360



David James Estate Agents

David James Estate Agents, 45B Plains Road – NG3 5JU

0115 962 4213 • mapperley@david-james.com • www.david-james.com

These particulars are produced in good faith and are set out as a general guide only. Measurements are approximate and floor plans are for illustrative purposes only. Services have not been tested. We have established professional relationships with third-party suppliers for the provision of services to Clients, details of which can be found on the property listing page on our website.