



Croft Cottage Le Mont De Gouray St. Martin

Asking £525,000 - AMAZING VIEWS FROM PRIVATE TERRACE - SOLE AGENT

BROADLANDS

FINDING YOU A HOME SINCE 1972

Croft Cottage Le Mont De Gouray St Martin

- Gorey cottage full of character
- Open plan living at its best
- Sunny living room and fully fitted kitchen
- Double bedroom and large versatile study
- A stones throw from Gorey Harbour
- Private deck with panoramic views over the castle, harbour and bay
- Second small terrace to front
- Walk to Gorey's shops, restaurants and bars
- Free parking close by
- Frequent bus route
- Sole agent
- WhatsApp Don 07829 917172 /
don@broadlandsjersey.com



Croft Cottage Le Mont De Gouray St Martin

A versatile cottage set on the hillside leading to Gorey Harbour with raised deck featuring spectacular views over the castle, harbour and coastline.

The house layout is cleverly designed to make the most of the available space and oozes character throughout. The cosy accommodation - set over two levels - features double bedroom, large office/study, bathroom and useful store room on the ground floor, and open plan living room/kitchen, utility and small terrace on the first floor.

Need a second bedroom? No problem the office/study will act as a large double should you need it. The property benefits from lots of natural light and an integrated stove helps provide a cosy ambience in the cold winter months.

When the sun eventually shines you will love the private raised deck offering one of the best views possible over the world below.

A selection of quality restaurants, bars and shops are two minutes' walk and The Royal Jersey Golf Club a little further. A frequent bus route runs outside. This will be popular so contact Broadlands the vendors sole agents now to make your appointment to view.





Living

Lovely open plan reception room cleverly arranged with areas for relaxing, dining and cooking. Three large windows to front provide plenty of natural light and the kitchen is cleverly designed making the most of the available space. Integrated appliances include oven, gas hob, extractor and fridge/freezer. Utility cupboard housing washing and drying machines.

Sleeping

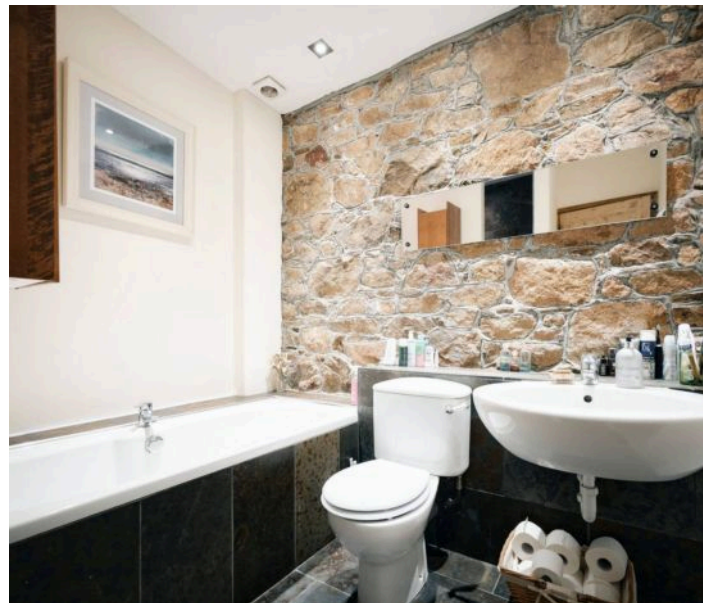
Double bedroom with door to front. Large study/office ideal for use as a second bedroom if required. House bathroom with exposed granite wall and four piece suite comprising walk-in shower, bath, basin and WC. Useful store room.

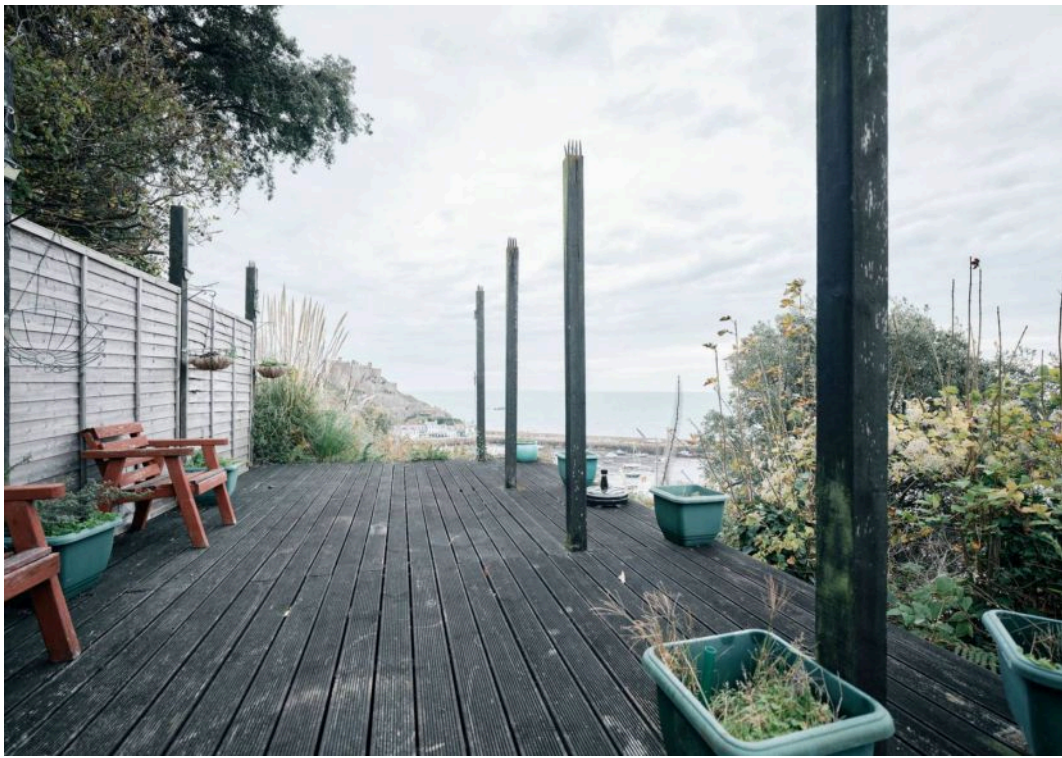
Outside

Small garden to front. Raised deck to the rear providing sweeping views ideal for relaxing and alfresco dining. Free parking is available a stone's throw away and a regular bus runs to town. Fancy a swim in the sea? No problem there are plenty of opportunities close by.

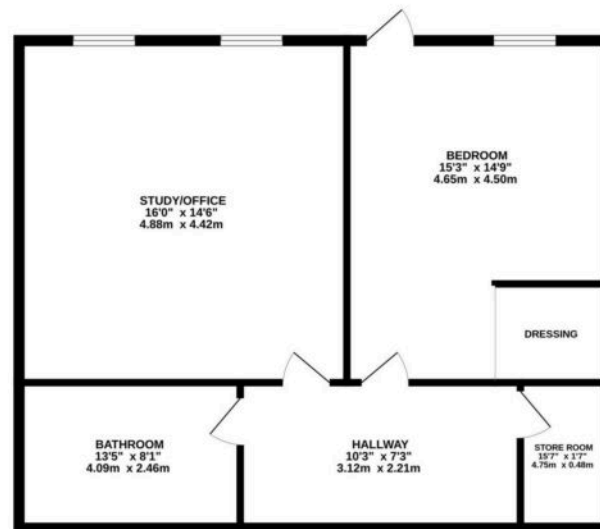
Services

All mains. Feature stove and electric heating with individually powered radiators.

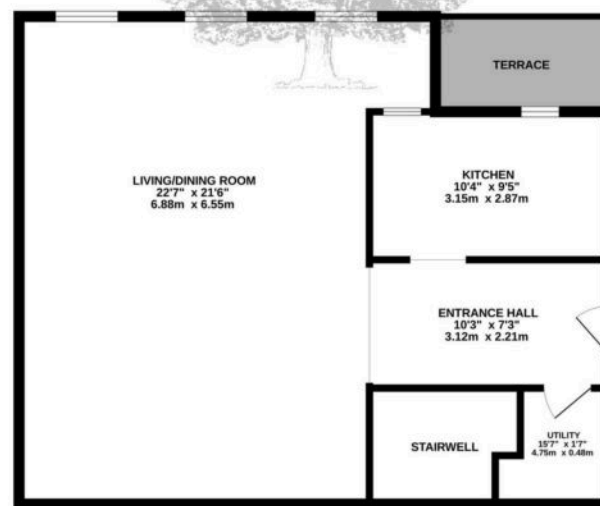




GROUND FLOOR
812 sq.ft. (75.5 sq.m.) approx.



1ST FLOOR
766 sq.ft. (71.2 sq.m.) approx.



TOTAL FLOOR AREA : 1578 sq.ft. (146.6 sq.m.) approx.

Whilst every attempt has been made to ensure the accuracy of the floorplan contained here, measurements of doors, windows, rooms and any other items are approximate and no responsibility is taken for any error, omission or mis-statement. This plan is for illustrative purposes only and should be used as such by any prospective purchaser. The services, systems and appliances shown have not been tested and no guarantee as to their operability or efficiency can be given.
Made with Metropix ©2025



Broadlands

Broadlands Estates, Library Place - JE2 3NL

07829 917172 • don@broadlandsjersey.com • www.broadlandsjersey.com/

BROADLANDS

FINDING YOU A HOME SINCE 1972