



## 88 Brightmet Drive, Bolton

£220,000 Freehold

Three bed semi detached property • Brand new sage green kitchen with integrated appliances • Orangery • Separate detached garage • Large rear garden • Modern bathroom with power shower over the bath • Driveway for two vehicles • Walking distance to local primary schools • Walking distance to local amenities • Very desirable location





Nestled in a highly sought-after area, this exquisite 3-bedroom semi-detached house presents an ideal opportunity for those seeking modern comfort and convenience. Boasting a newly installed sage green kitchen with integrated appliances and an adjoining orangery, this property is a testament to stylish living. The living spaces are further enhanced by a modern bathroom featuring a power shower over the bath, ensuring both functionality and luxury.

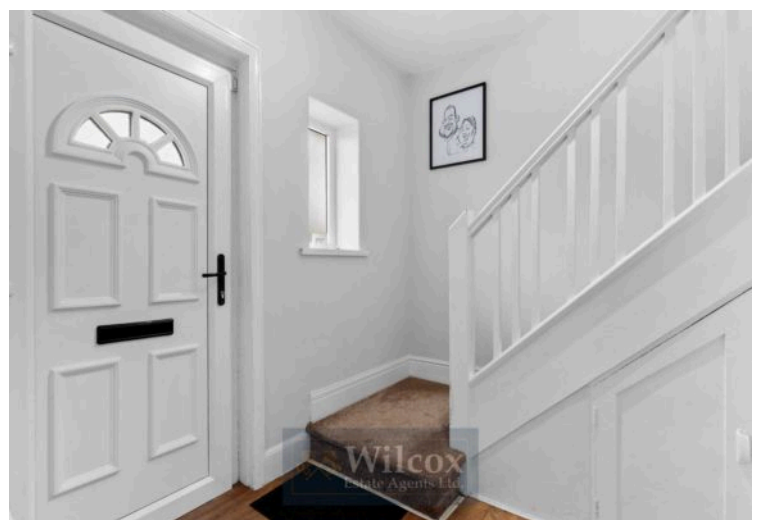
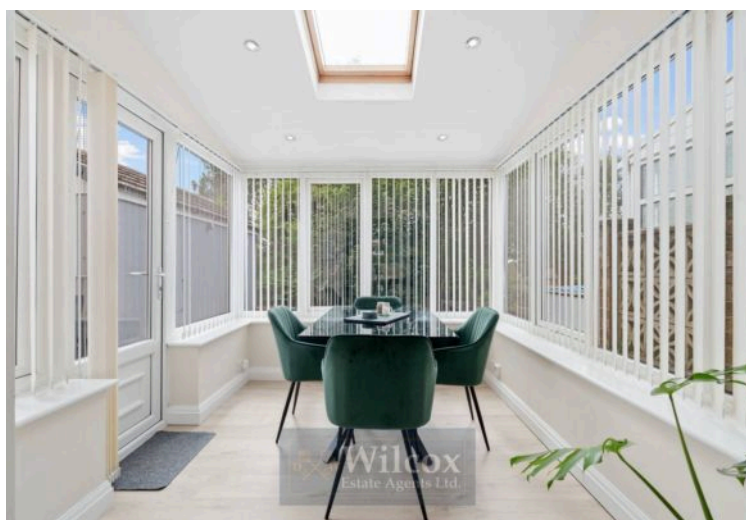
In addition to the appealing interior, the property offers practical features including a separate detached garage, a driveway with room for two vehicles, and a generously sized rear garden perfect for outdoor entertainment. Situated within a stone's throw of local primary schools and amenities, this residence combines tranquillity with accessibility, making it a prime choice for families seeking a welcoming and vibrant community.

GROUND FLOOR

1ST FLOOR



Whilst every attempt has been made to ensure the accuracy of the floorplan contained here, measurements of doors, windows, rooms and any other items are approximate and no responsibility is taken for any error, omission or mis-statement. This plan is for illustrative purposes only and should be used as such by any prospective purchaser. The services, systems and appliances shown have not been tested and no guarantee as to their operability or efficiency can be given.  
Made with Metropix ©2025



Nestled in a highly sought-after area, this exquisite 3-bedroom semi-detached house presents an ideal opportunity for those seeking modern comfort and convenience. Boasting a newly installed sage green kitchen with integrated appliances and an adjoining orangery, this property is a testament to stylish living. The living spaces are further enhanced by a modern bathroom featuring a power shower over the bath, ensuring both functionality and luxury. In addition to the appealing interior, the property offers practical features including a separate detached garage, a driveway with room for two vehicles, and a generously sized rear garden perfect for outdoor entertainment. Situated within a stone's throw of local primary schools and amenities, this residence combines tranquillity with accessibility, making it a prime choice for families seeking a welcoming and vibrant community.

The outdoor space of this property is equally impressive, providing a harmonious blend of functionality and beauty. Step outside to discover a lush lawned area adorned with charming railway sleepers and a fence panel surround, adding a touch of rustic elegance to the surroundings. Alongside the verdant lawn, a flagstone driveway offers ample parking space for two vehicles, ensuring both practicality and convenience for residents and visitors alike. Whether enjoying a leisurely afternoon in the expansive garden or hosting gatherings in the open-air setting, the outside space of this property offers endless possibilities for creating cherished memories with loved ones. Imbued with a sense of serenity and privacy, this outdoor oasis serves as a delightful extension of the inviting interiors, solidifying this residence as a true gem in a very desirable location.