



Les Mouettes, La Route De La Haule, St. Peter
£425,000

BROADLANDS
FINDING YOU A HOME SINCE 1972

Les Mouettes, La Route De La Haule

St. Peter, Jersey

- Location, Location, Location
- Step off the patio and walk across to the beach
- 1 bedroom house on the beach
- On the coastal bus routes and ample parking nearby or just catch Le Petit train
- Superb alternative to an apartment
- Sole agent
- Call Tony on 07797726677 or tony@broadlandsjersey.com



Les Mouettes, La Route De La Haule

St. Peter, Jersey

A Unique Coastal Home Opportunity

Discover this charming **one-bedroom end of terrace house**, perfectly situated in a prime seaside location. Offering a rare alternative to apartment living, this delightful property combines comfort, convenience, and the very best of coastal lifestyle.

Step out from your private south-facing patio garden and enjoy direct access to the promenade, sandy beach, and cycle track. Whether you prefer a peaceful stroll, a refreshing swim, or a bike ride by the sea, this home places it all at your doorstep.

With excellent transport links, nearby parking, and even the option of *Le Petit Train* for a scenic journey, you'll enjoy both seaside tranquillity and easy access to amenities.

As **sole agents**, we are delighted to present this property — a true gem that blends lifestyle and location in equal measure.





Living

Open plan lounge/diner with double doors opening onto the front patio. Separate fully fitted kitchen with integrated appliances.

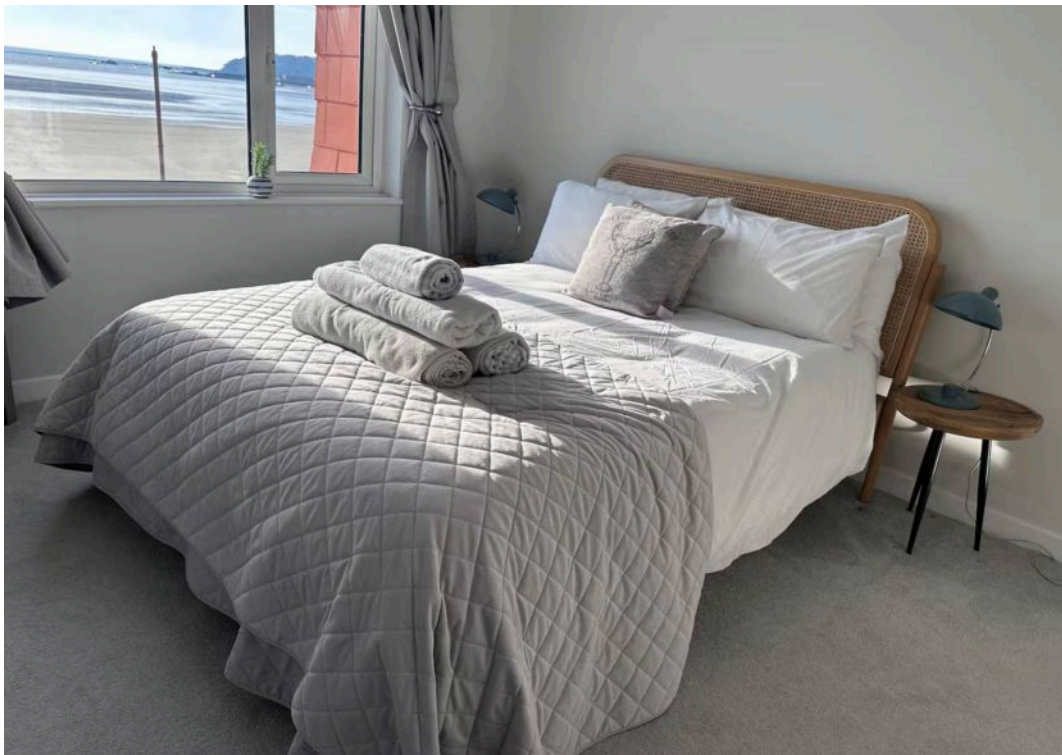
Sleeping

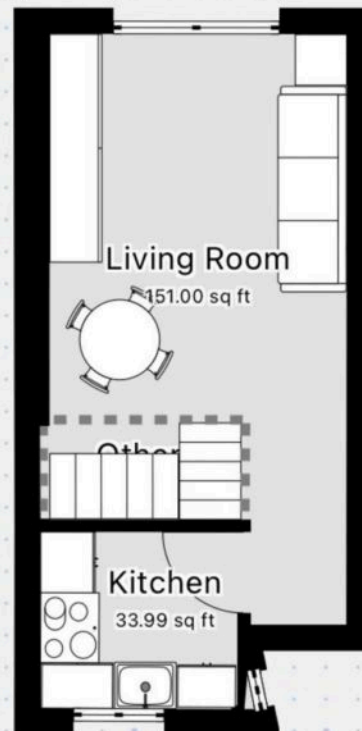
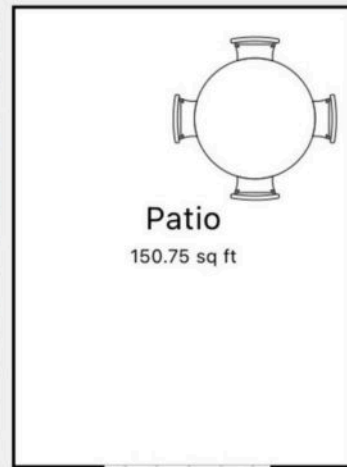
1st floor double bedroom with open plan storage. House bathroom with shower cubicle.

Services

All mains (no gas). Electric heating. Fibre broadband. Service charge £40 pcm.









Broadlands

Broadlands Estates, Library Place - JE2 3NL

01534 880770 • enquiries@broadlandsjersey.com • www.broadlandsjersey.com/

BROADLANDS

FINDING YOU A HOME SINCE 1972