

Tallis Way, Borehamwood

£475,000 Freehold

Recently refurbished terraced house • Four bedrooms • Open plan living space with large modern kitchen with breakfast bar Island • Off street parking for two cars • Downstairs guest W.C • Private garden • Short walk to local shops, schools and bus routes

L&Hresidential
laminghope.com sales & lettings

L&H Residential are proud to present this stunning property. Step into modern living at this recently refurbished 4-bedroom terraced house. The property boasts a spacious open-plan living area complete with a large modern kitchen featuring a sleek island for culinary creations. With four bedrooms providing ample space for the family, this home offers the ideal blend of style and functionality. Convenience is key with off-street parking for two cars and a downstairs guest W.C for added comfort. Enjoy the outdoors in your private garden, perfect for relaxing or entertaining. Situated just a short walk away from local amenities, including shops, schools, and bus routes, this property encapsulates modern living at its finest.

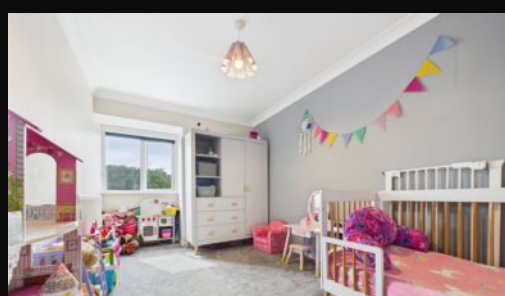
020 3617 1333

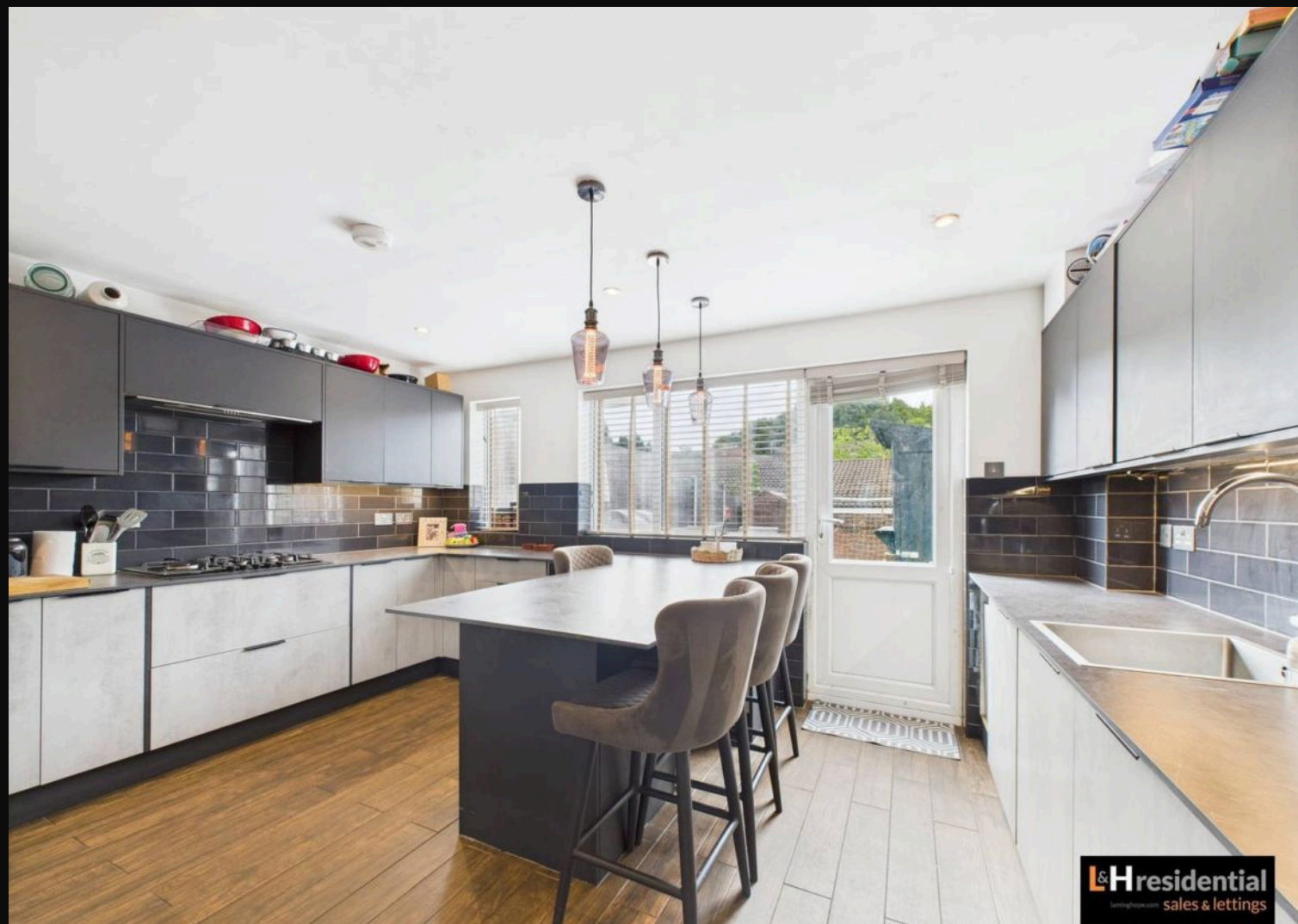
enquiries@laminghope.com

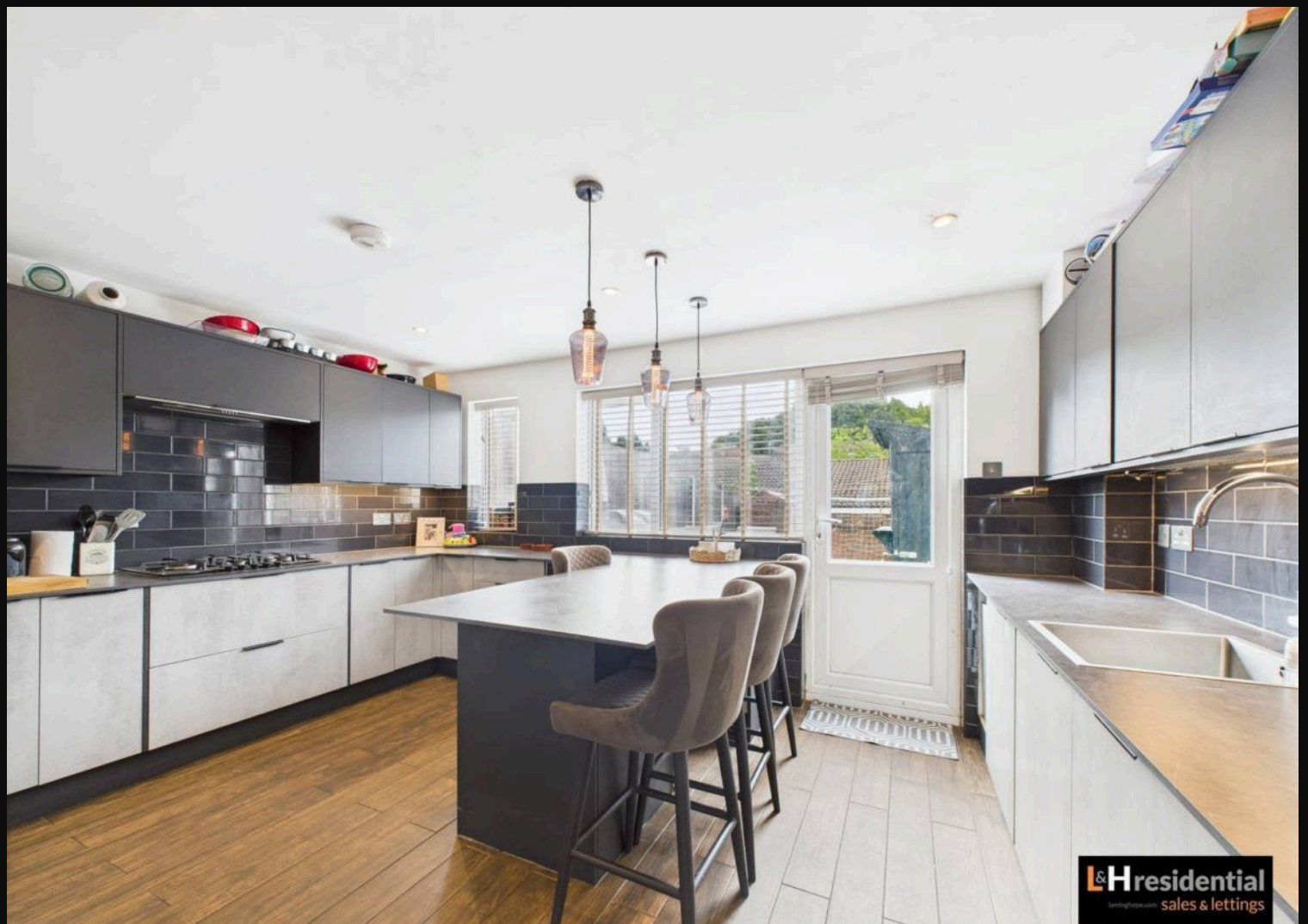
L&Hresidential
sales & lettings

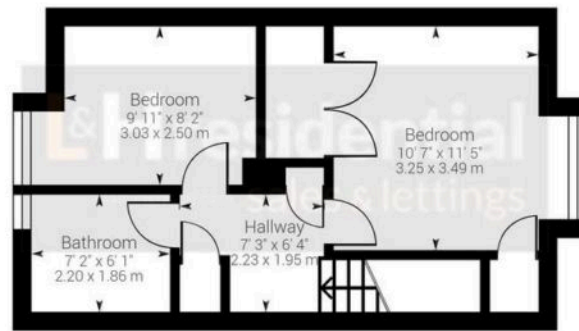


- Recently refurbished terraced house
- Four bedrooms
- Open plan living space with large modern kitchen with breakfast bar Island
- Off street parking for two cars
- Downstairs guest W.C
- Private garden
- Short walk to local shops, schools and bus routes

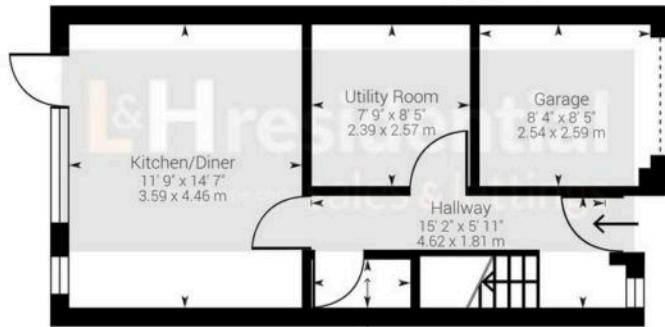




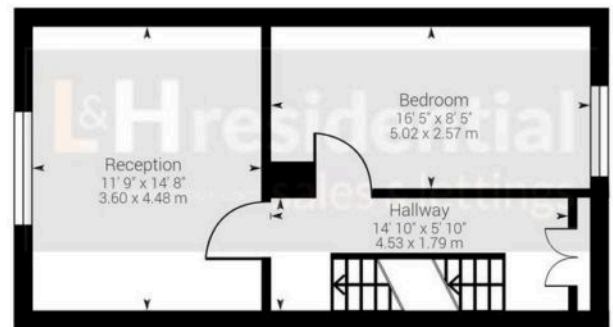




2nd Floor



Ground Floor

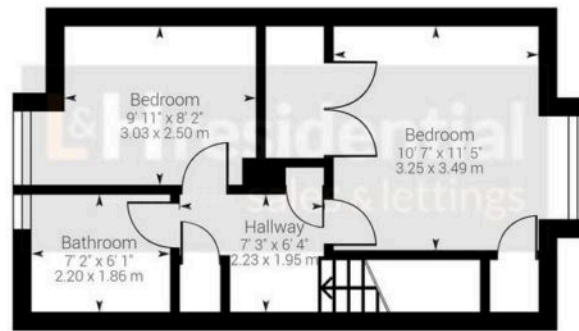


1st Floor

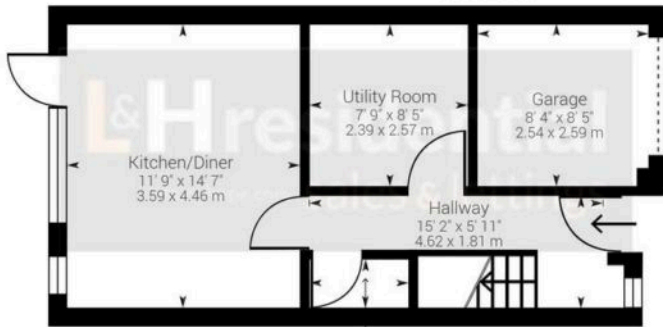
Approximate net internal area: 1098.14 ft² (1173.39 ft²) / 102.02 m² (109.01 m²)

While every attempt has been made to ensure accuracy, all measurements are approximate, not to scale. This floor plan is for illustrative purpose only and should be used as such by any prospective tenant or purchaser.

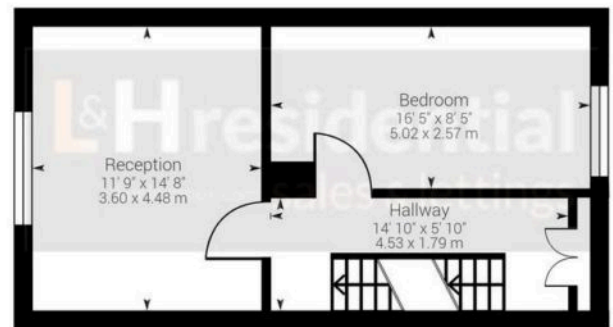
Powered by Giraffe360



2nd Floor



Ground Floor

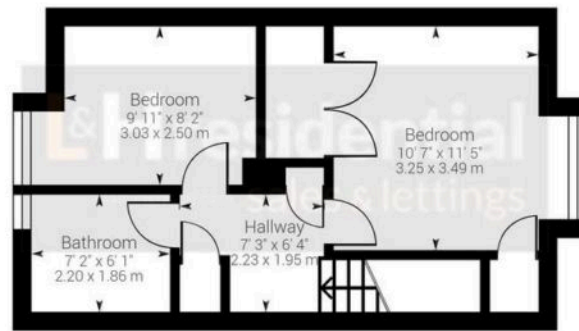


1st Floor

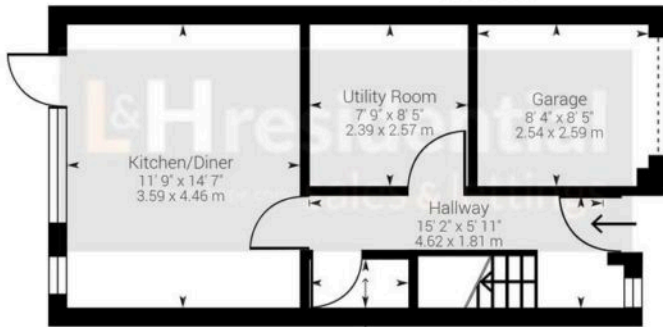
Approximate net internal area: 1098.14 ft² (1173.39 ft²) / 102.02 m² (109.01 m²)

While every attempt has been made to ensure accuracy, all measurements are approximate, not to scale. This floor plan is for illustrative purpose only and should be used as such by any prospective tenant or purchaser.

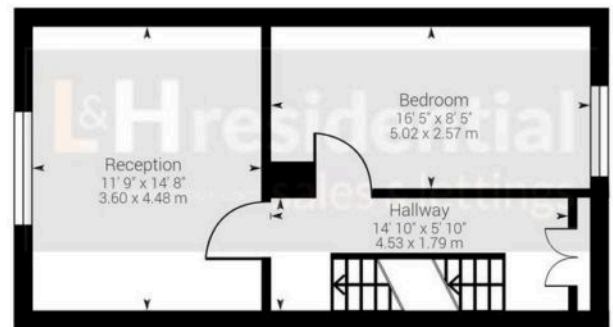
Powered by Giraffe360



2nd Floor



Ground Floor



1st Floor

Approximate net internal area: 1098.14 ft² (1173.39 ft²) / 102.02 m² (109.01 m²)

While every attempt has been made to ensure accuracy, all measurements are approximate, not to scale. This floor plan is for illustrative purpose only and should be used as such by any prospective tenant or purchaser.

Powered by Giraffe360