



13 Roman Road, Steyning BN44 3FN
£2,000 pcm

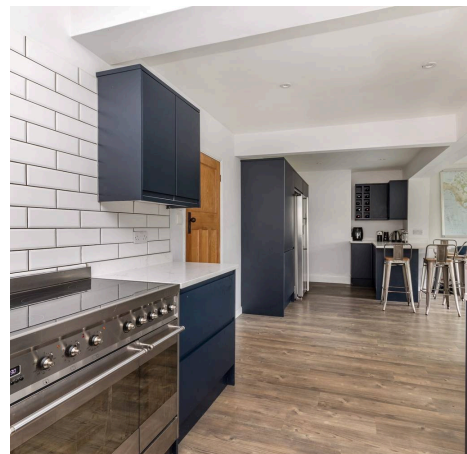
**MANSELL
McTAGGART**
Trusted since 1947

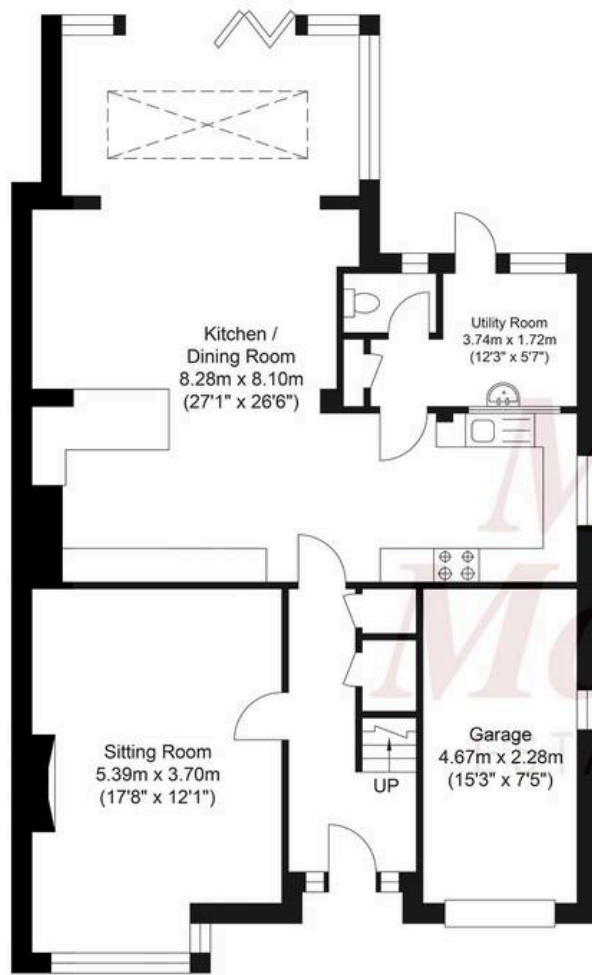
13 Roman Road

Steypning

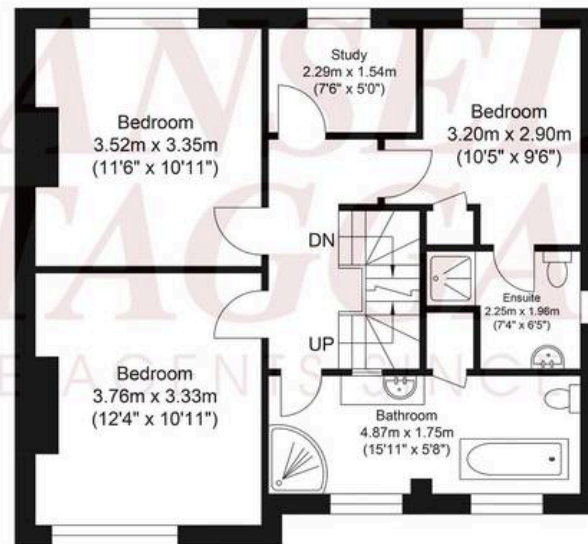
Four bedroom semi detached family home

- Four Double Bedroom Semi-Detached Family Home
- Spacious L-Shaped Open Plan Living/Entertaining Room With Bi-Fold Doors Leading To The Garden
- Modern Fitted Kitchen with appliances
- Separate Formal Living Room
- Utility Room and Downstairs WC
- Large West Facing Rear Garden
- Garage and Driveway
- Council Tax Band - E

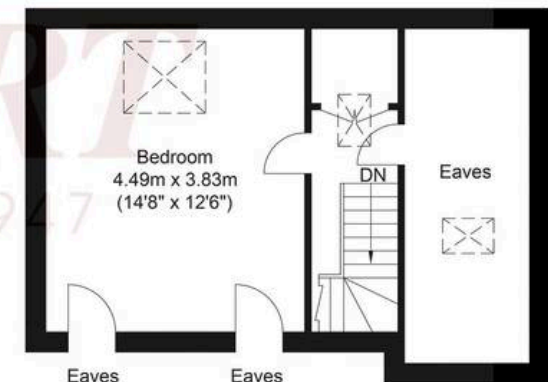




Ground Floor
Approximate Floor Area
990.17 sq ft
(91.99 sq m)



First Floor
Approximate Floor Area
615.37 sq ft
(57.17 sq m)



Second Floor
Approximate Floor Area
355.31 sq ft
(33.01 sq m)



Approximate Gross Internal Area (Including Garage) = 182.17 sq m / 1960.86 sq ft
Illustration for identification purposes only, measurements are approximate, not to scale.



Mansell McTaggart Brighton & Hove

Mansell McTaggart, 138 Old London Road - BN1 8YA

01273 508955

patcham@mansellmctaggart.co.uk

www.mansellmctaggart.co.uk/branch/brighton

