



20 McDonna Street, Bolton

£130,000 Leasehold

Two double bedroom terrace property • Modern kitchen with laminate worktops • Three piece bathroom suite with electric shower over the bath • Low maintenance rear garden • Excellent first time buyer property • Superb investment opportunity • Walking distance to Smithills and Thornleigh School • Walking distance to Moss Bank Park • Close to Barrow Bridge • Walking distance to Asda and Lidl

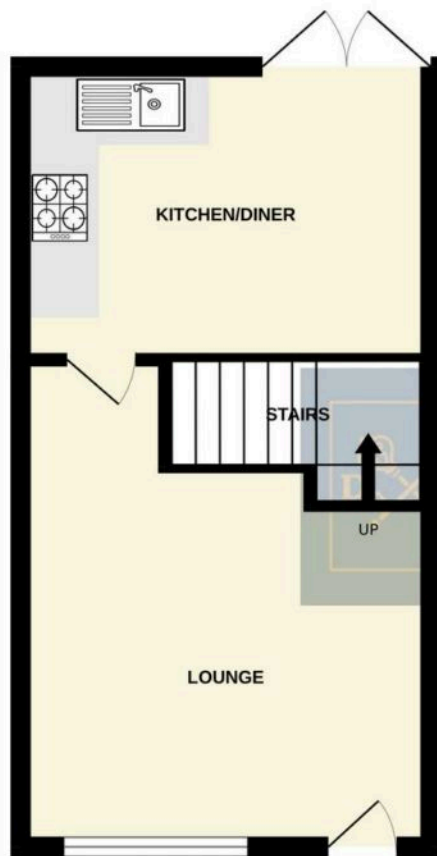




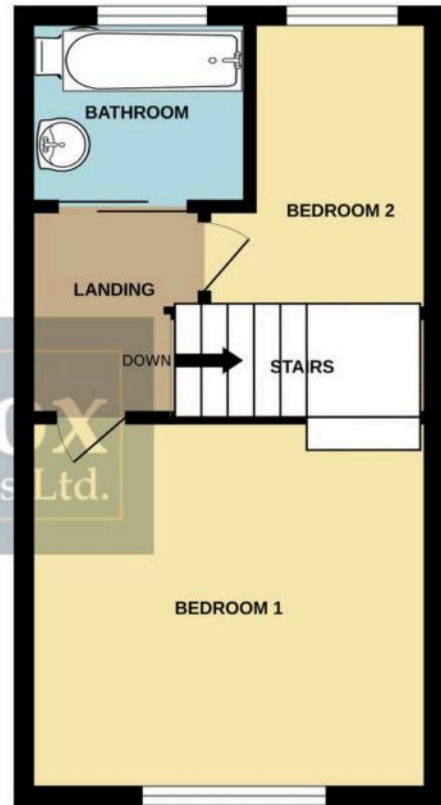
This attractive two double bedroom terraced house presents an excellent opportunity for first time buyers or investors seeking a well-located and low maintenance property. The home features a spacious lounge area, offering ample room for both relaxation and entertaining. The modern kitchen is fitted with laminate worktops and contemporary cabinetry, providing a practical and stylish space for meal preparation. Upstairs, you will find two generously sized double bedrooms, both with plenty of natural light and space for storage.

The three piece bathroom suite includes a bath with an electric shower over, a wash basin, and a WC, all finished to a high standard. The property's layout is both functional and inviting, making it easy to settle in and feel at home. Ideally situated within walking distance to Smithills and Thornleigh schools, as well as Moss Bank Park, this home is perfect for families or professionals. Local amenities such as Asda and Lidl are also just a short stroll away, and the scenic Barrow Bridge area is close by, offering lovely walks and outdoor activities.

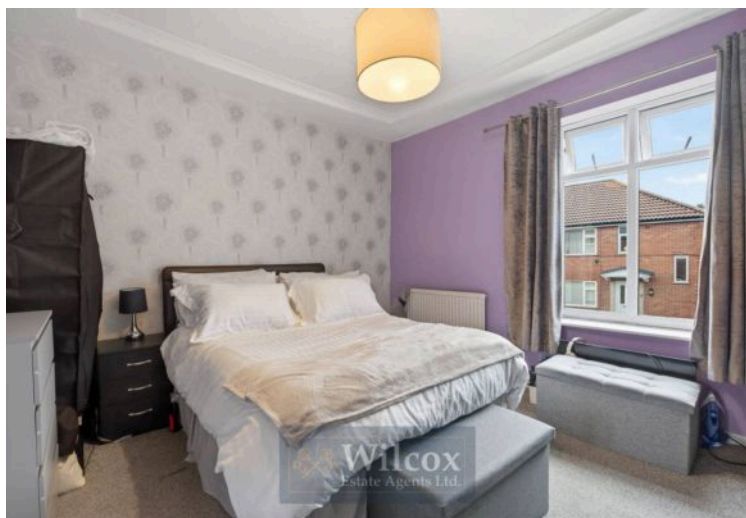
GROUND FLOOR



1ST FLOOR



Whilst every attempt has been made to ensure the accuracy of the floorplan contained here, measurements of doors, windows, rooms and any other items are approximate and no responsibility is taken for any error, omission or mis-statement. This plan is for illustrative purposes only and should be used as such by any prospective purchaser. The services, systems and appliances shown have not been tested and no guarantee as to their operability or efficiency can be given.
Made with Metropix ©2025



This attractive two double bedroom terraced house presents an excellent opportunity for first time buyers or investors seeking a well-located and low maintenance property. The home features a spacious lounge area, offering ample room for both relaxation and entertaining. The modern kitchen is fitted with laminate worktops and contemporary cabinetry, providing a practical and stylish space for meal preparation. Upstairs, you will find two generously sized double bedrooms, both with plenty of natural light and space for storage. The three piece bathroom suite includes a bath with an electric shower over, a wash basin, and a WC, all finished to a high standard. The property's layout is both functional and inviting, making it easy to settle in and feel at home. Ideally situated within walking distance to Smithhills and Thornleigh schools, as well as Moss Bank Park, this home is perfect for families or professionals. Local amenities such as Asda and Lidl are also just a short stroll away, and the scenic Barrow Bridge area is close by, offering lovely walks and outdoor activities.

The outside space has been designed for ease of maintenance and security, making it ideal for busy lifestyles. To the front of the property, a flagged pathway leads to the main entrance, bordered by a neat wrought iron fence and accessed through a matching wrought iron gate. This creates a welcoming approach while also providing a sense of privacy and safety. The rear garden is enclosed by a sturdy brick wall and features concrete flooring, ensuring a tidy and practical area that requires minimal upkeep. A timber rear gate offers convenient access to the back of the property, making it easy to store bikes or bins. This low maintenance outdoor space is perfect for enjoying a morning coffee, setting up a small seating area, or simply relaxing in the fresh air without the worry of extensive gardening. Combined with its excellent location and modern interior, this property is a superb choice for anyone looking to move straight in and enjoy comfortable, convenient living.