



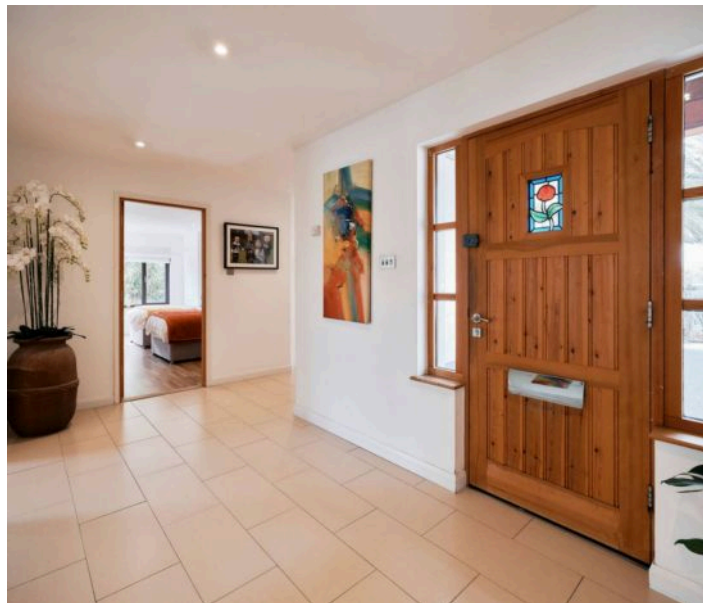
Atlanta, La Route Des Genets, St. Brelade
£1,575,000

BROADLANDS
FINDING YOU A HOME SINCE 1972

Atlanta, La Route Des Genets

St. Brelade, Jersey

- Beautiful detached bungalow in Park Estate
- Walk-in condition
- Swimming pool
- Large kitchen with vaulted ceiling
- Separate office
- Parking for 6 vehicles including 2 carports
- Lateral living in style
- Short walk to St. Brelades Bay and amenities
- Contact Angela on 07829 900010 / angela@broadlandsjersey.com



Atlanta, La Route Des Genets

St. Brelade, Jersey

Presenting a rare opportunity to own a stunning 4-bedroom detached bungalow in the sought-after Park Estate, this beautiful property is luxury living at its finest. Boasting walk-in condition and meticulous attention to detail, the bungalow features a sprawling layout with a swimming pool, a large kitchen with a vaulted ceiling, a separate office, and parking for 6 vehicles including 2 carports. Offering a blend of elegance and functionality, this home provides the perfect sanctuary for those seeking a lifestyle of comfort and convenience. Enjoy the ease of lateral living in style, with the added benefit of a short walk to the picturesque St. Brelades Bay and local amenities. For more information or to schedule a viewing, please contact Angela on 07829 900010 or via email at angela@broadlandsjersey.com.





Living

This residence boasts an exquisite kitchen featuring a vaulted ceiling and ample space for a dining table, complemented by a separate sitting room.

Sleeping

The property offers four well-proportioned bedrooms, all arranged over one level to provide the ease and convenience of lateral living.

Parking

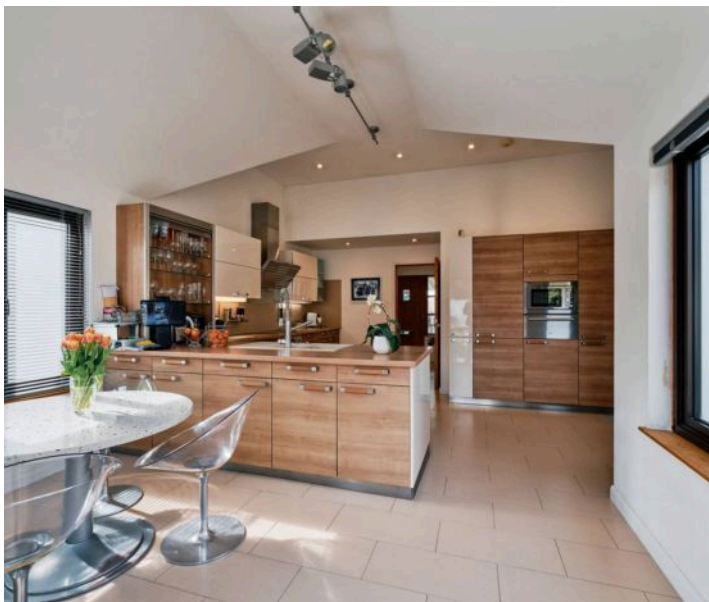
Generous driveway parking for up to six vehicles, including two covered carports, provides excellent convenience and practicality.

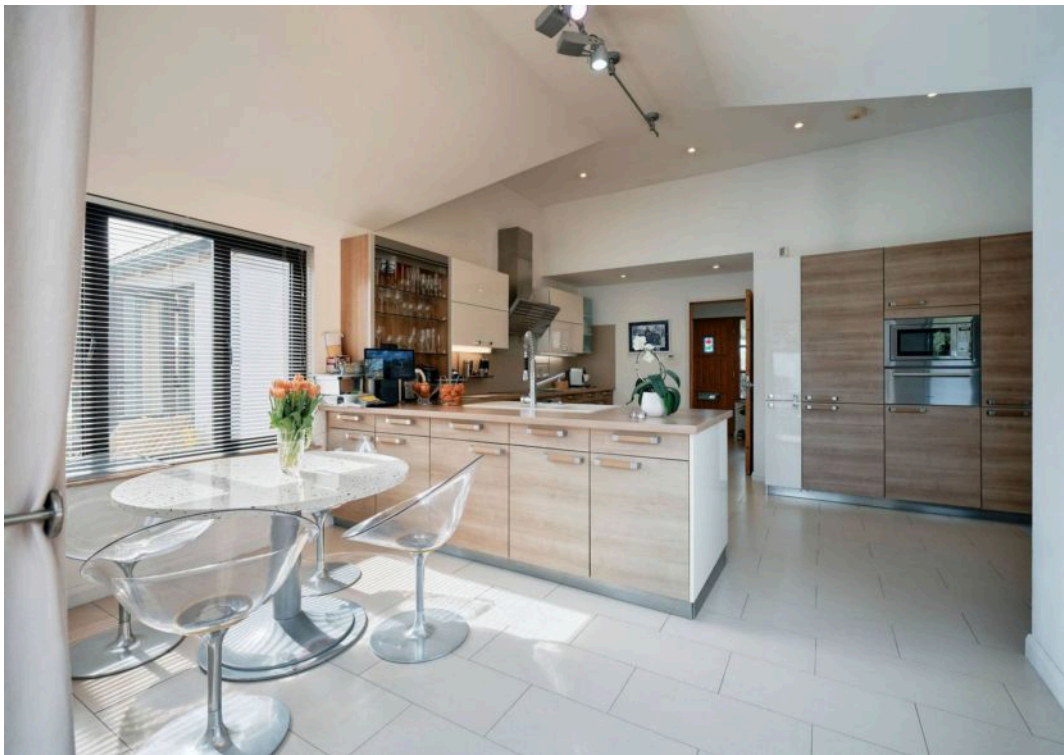
Services

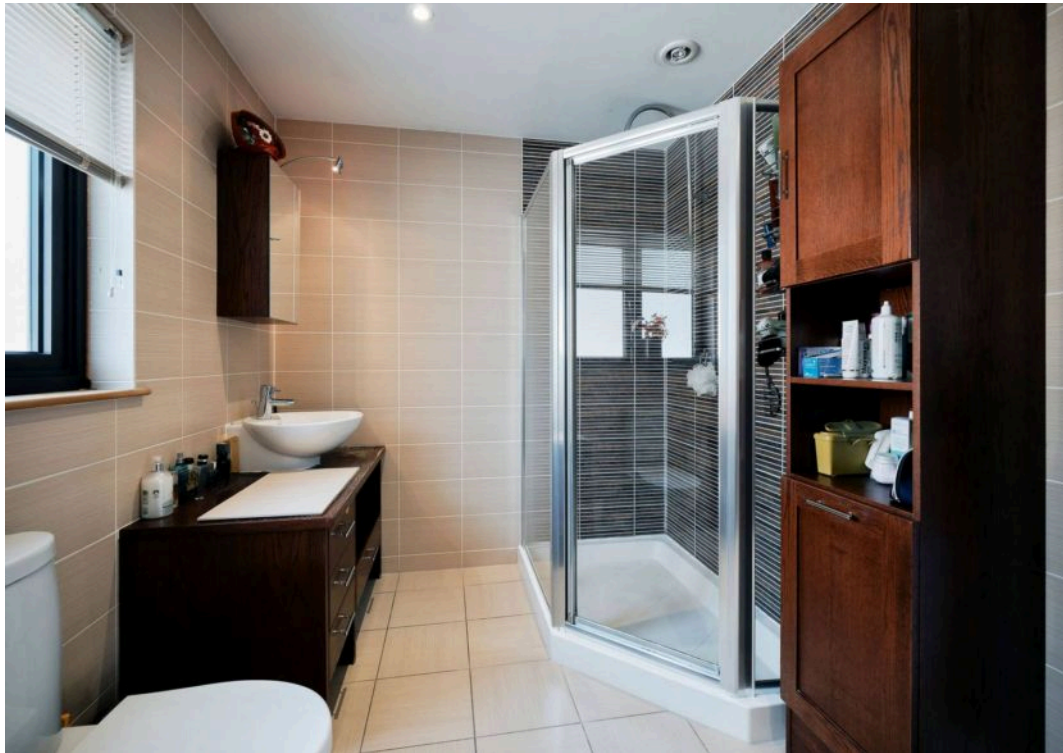
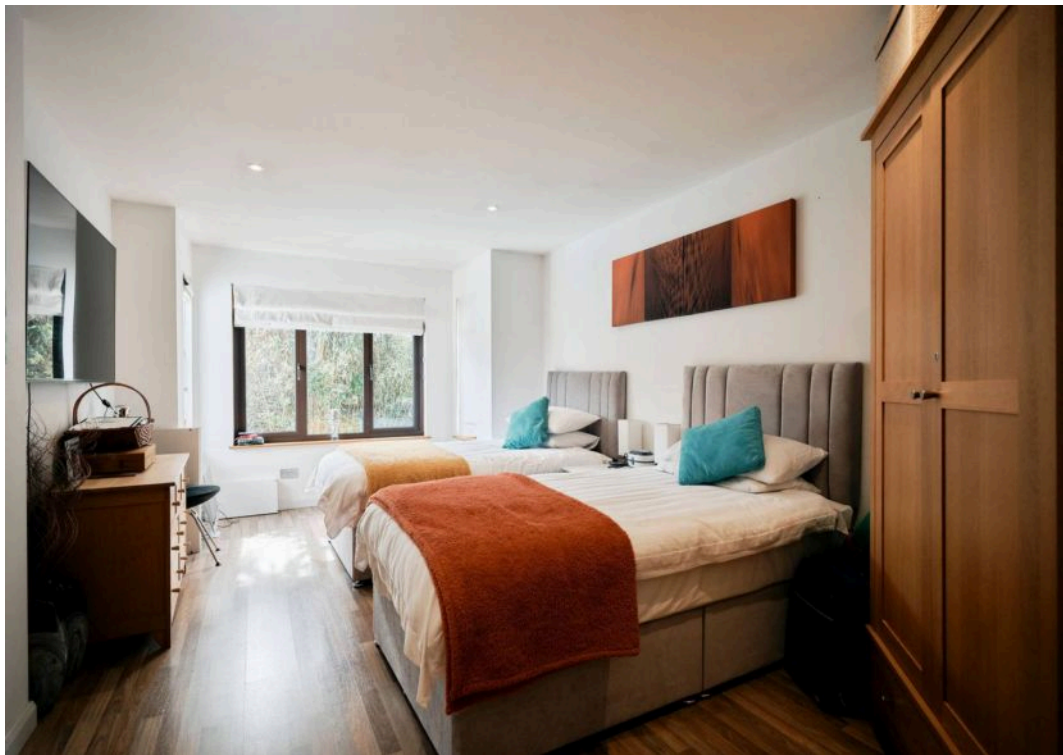
The property is connected to mains water and drainage and benefits from oil-fired central heating.

Additional Information

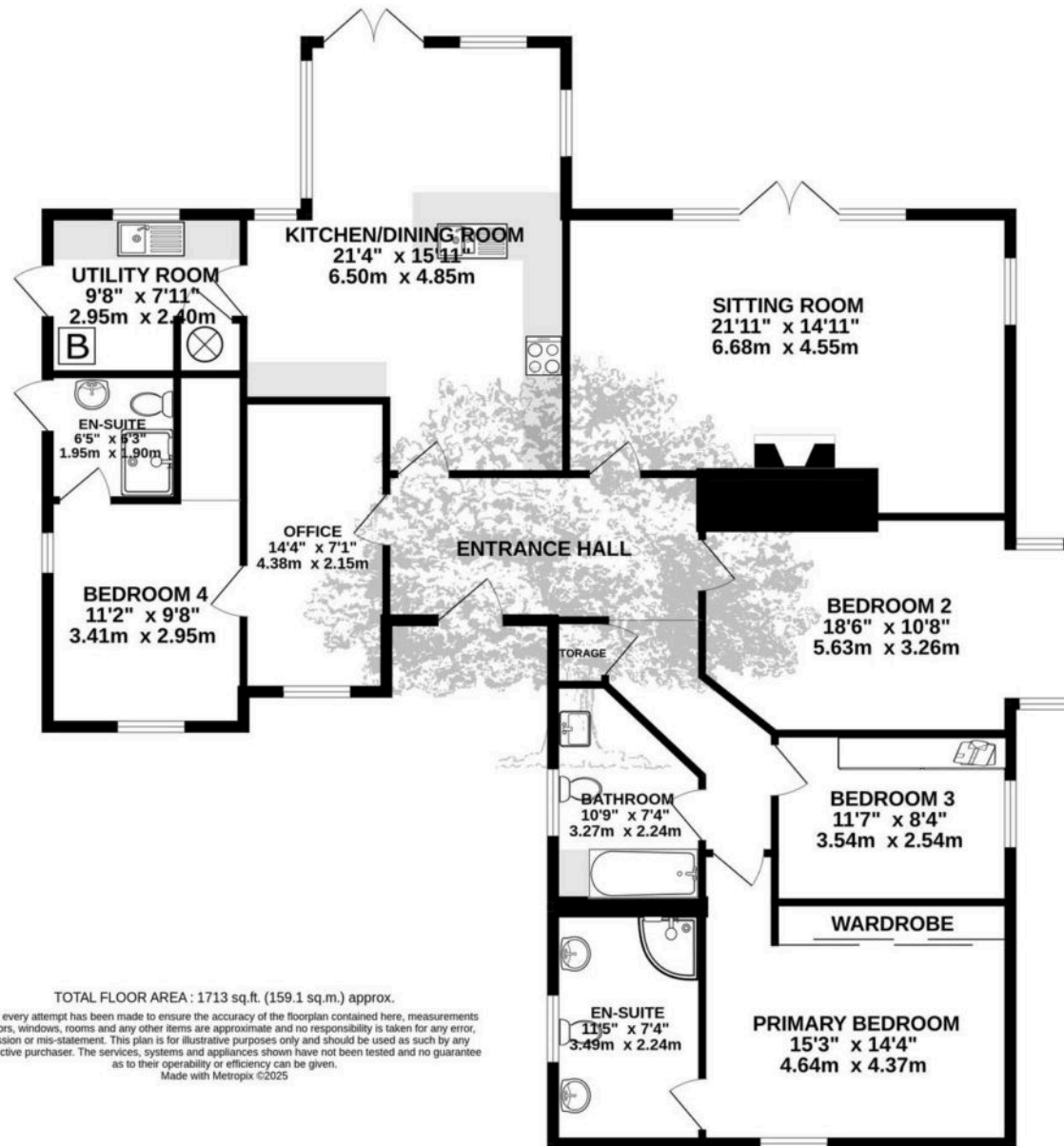
The property is Freehold and located within the sought-after Mont Nicolle and Le Quennevais school catchment area in the parish of St. Brelade.







GROUND FLOOR
1713 sq.ft. (159.1 sq.m.) approx.



TOTAL FLOOR AREA : 1713 sq.ft. (159.1 sq.m.) approx.

Whilst every attempt has been made to ensure the accuracy of the floorplan contained here, measurements of doors, windows, rooms and any other items are approximate and no responsibility is taken for any error, omission or mis-statement. This plan is for illustrative purposes only and should be used as such by any prospective purchaser. The services, systems and appliances shown have not been tested and no guarantee as to their operability or efficiency can be given.
Made with Metropix ©2025



Broadlands

Broadlands Estates, Library Place - JE2 3NL

01534 880770 • enquiries@broadlandsjersey.com • www.broadlandsjersey.com/

BROADLANDS

FINDING YOU A HOME SINCE 1972