



Stretton Way, Borehamwood

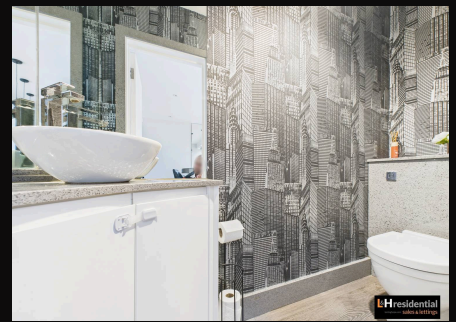
£549,950 Freehold

Extended terraced house • Newly refurbished to a high standard • Three bedrooms • Open plan living • Downstairs guest w.c.
• Off street parking • Private rear garden with side access • Short walk to local schools, shops, parks and bus routes • CHAIN
FREE

L&Hresidential
laminghope.com sales & lettings

L&H Residential are proud to present this beautifully extended mid-terraced house has been newly refurbished to a high standard, offering modern finishes throughout. The property features three well-proportioned bedrooms, providing ample space for family living or those seeking a comfortable work-from-home environment. The heart of the home is a spacious open plan living area, designed to maximise light and flexibility for both relaxing and entertaining. The contemporary kitchen is fitted with quality appliances and stylish cabinetry, creating a practical yet inviting space.

Offered to the market chain free, this property presents an exceptional opportunity for buyers seeking a move-in ready home in a sought-after location. The high standard of refurbishment, combined with thoughtful extensions and a practical layout, make this an attractive option for families and professionals alike. Early viewing is highly recommended to fully appreciate all this home has to offer.

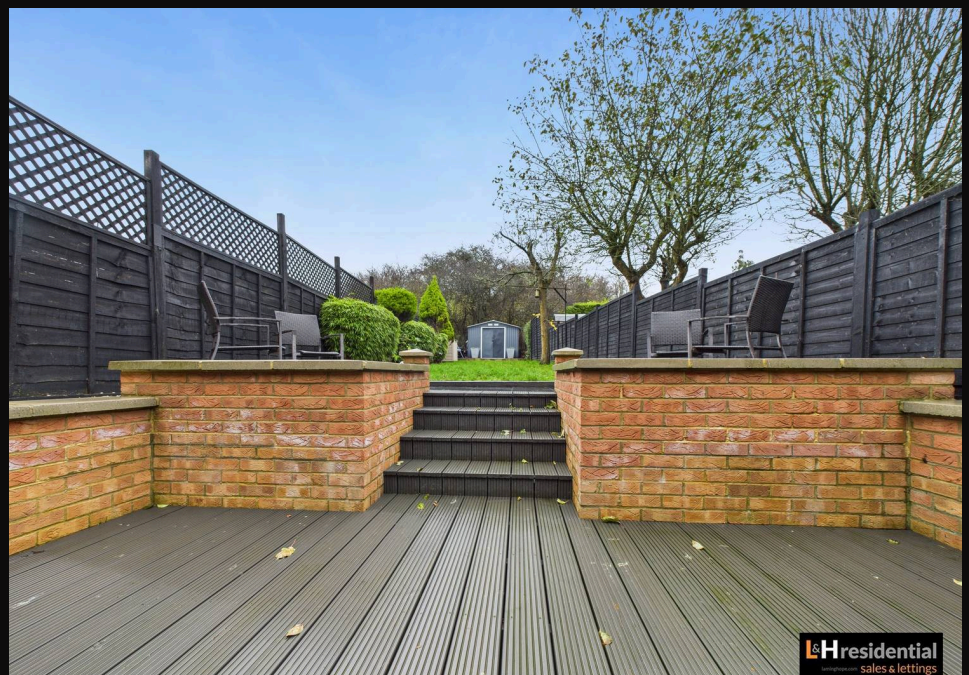
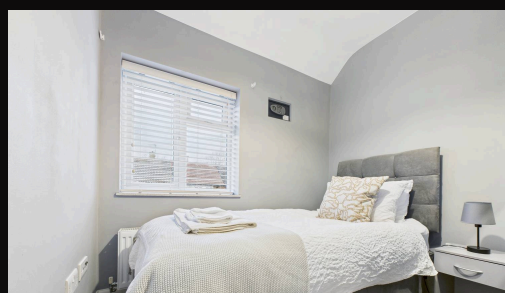
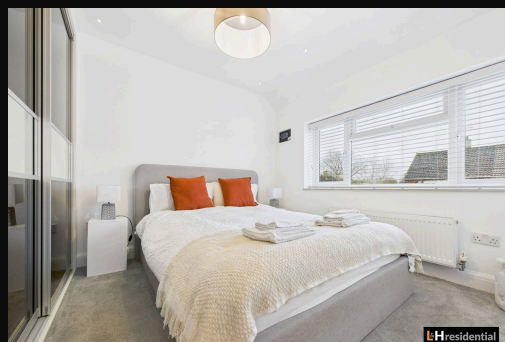


020 3617 1333

enquiries@laminghope.com

L&H residential
sales & lettings

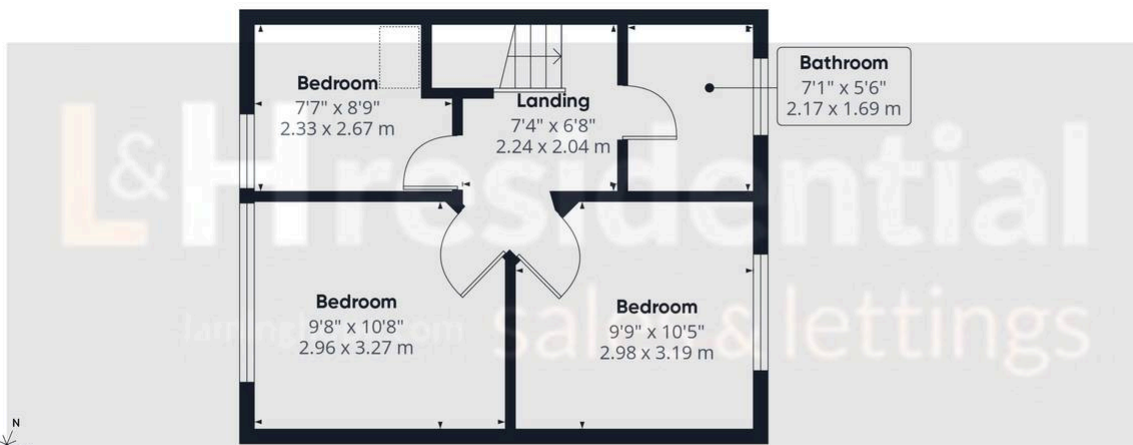
- Extended terraced house
- Newly refurbished to a high standard
- Three bedrooms
- Open plan living
- Downstairs guest w.c.
- Off street parking
- Private rear garden with side access
- Short walk to local schools, shops, parks and bus routes
- CHAIN FREE



L&H residential
sales & lettings



Ground Floor



Floor 1

Approximate total area⁽¹⁾

846 ft²
78.6 m²

Reduced headroom

12 ft²
1.1 m²

(1) Excluding balconies and terraces

Reduced headroom

..... Below 5 ft/1.5 m

Calculations reference the RICS IPMS 3C standard. Measurements are approximate and not to scale. This floor plan is intended for illustration only.

GIRAFFE360