



6 Marina Grove, Lostock Hall

Offers Over £200,000 Freehold



Welcome to this beautifully presented, bright and airy three-bedroom semi-detached home, offering a perfect blend of style, comfort, and practicality. The good-sized lounge provides an ideal space for relaxing or entertaining, while the adjoining conservatory creates a light-filled retreat overlooking the low-maintenance rear garden. The modern kitchen is thoughtfully designed with ample storage and work surfaces, perfect for preparing meals and family dining. Upstairs, there are three well-proportioned bedrooms and a stylish, contemporary bathroom, all finished to a high standard.

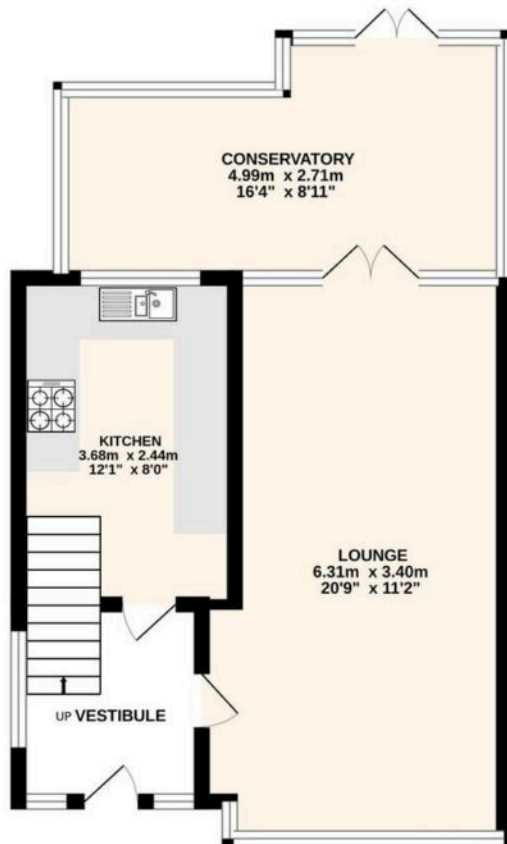
Perfectly suited for families, first-time buyers, or professionals, this charming home is close to local amenities, schools, and transport links. EPC Rating D, Council Tax Band B, Freehold.



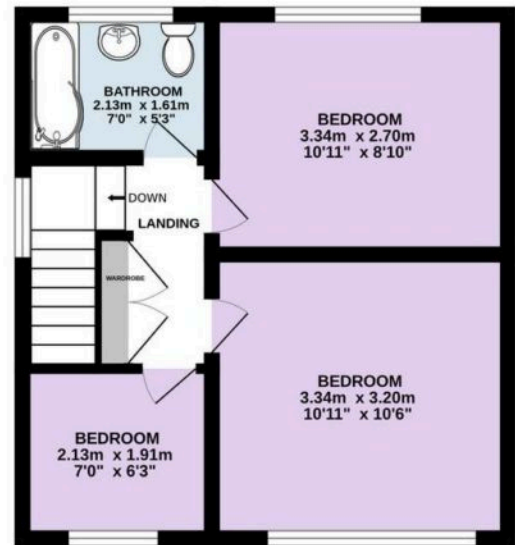




GROUND FLOOR
45.6 sq.m. (491 sq.ft.) approx.



1ST FLOOR
32.3 sq.m. (347 sq.ft.) approx.



TOTAL FLOOR AREA : 77.8 sq.m. (838 sq.ft.) approx.

Every attempt is made to ensure accuracy, however all measurements are approximate. This plan is for illustrative purposes only and is not to scale.
Made with Metropix ©2025

You can include any text here. The text can be modified upon generating your brochure.