



Flat 28, Charlotte Court The Royal Seabathing Canterbury |

Offers Over £220,000



Flat 28

Charlotte Court The Royal Seabathing
Canterbury Road, Margate

Tenure: Leasehold

- Chain Free
- Long Lease
- Second Floor
- Allocated Parking
- Two Double Bedrooms
- Council Tax Band - C
- Modern Development





Entrance

Bedroom One

Dimensions: 3.89m x 3.15m (12'9 x 10'4).

Lounge / Dining Room

Dimensions: 3.61m x 3.48m (11'10 x 11'5).

Bathroom

Dimensions: 2.01m x 1.91m (6'7 x 6'3).

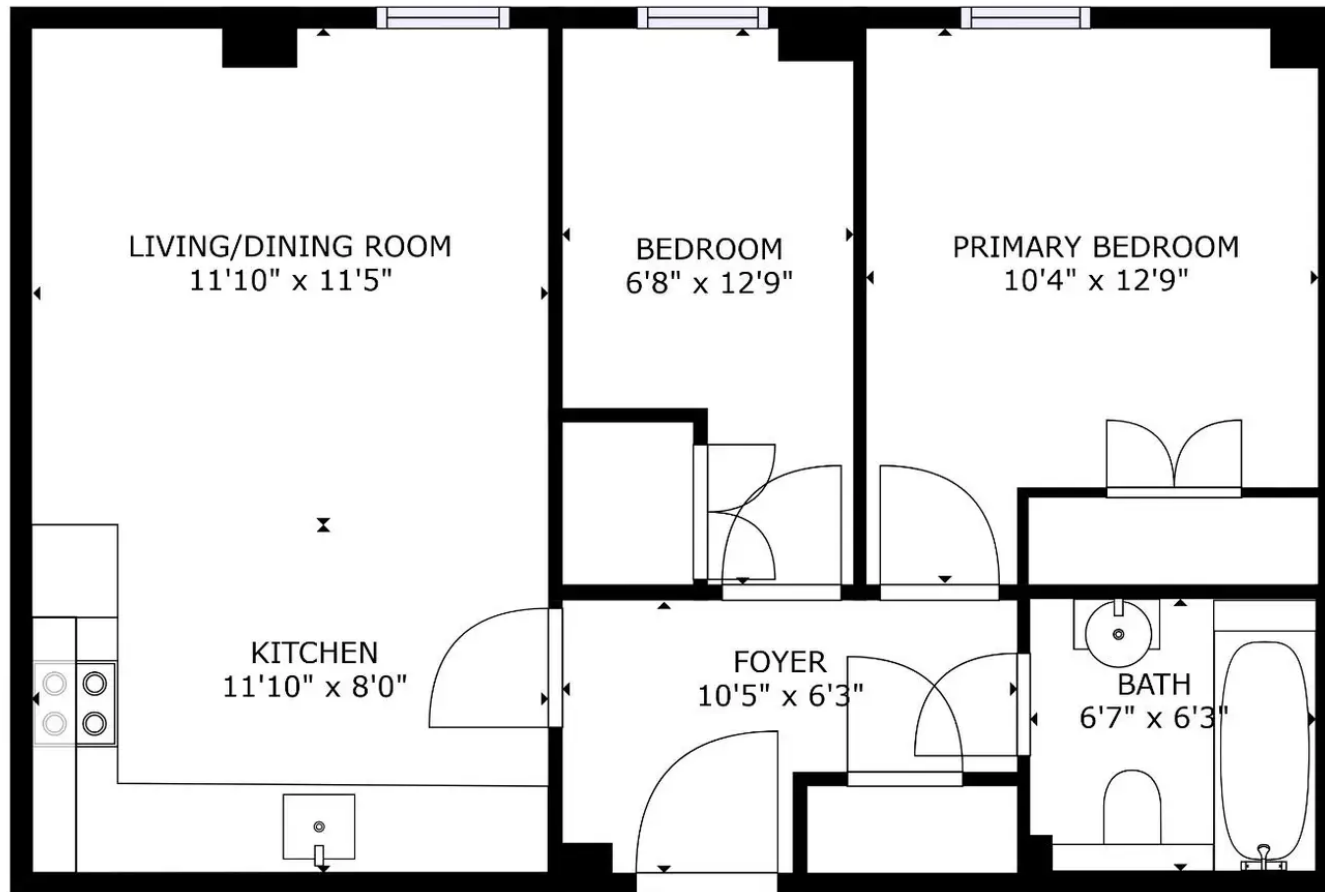
Kitchen

Dimensions: 3.61m x 2.44m (11'10 x 8'0).

Bedroom Two

Dimensions: 3.89m x 2.03m (12'9 x 6'8).





FLOOR 1

GROSS INTERNAL AREA
 FLOOR 1: 570 sq. ft
 TOTAL: 570 sq. ft
 SIZES AND DIMENSIONS ARE APPROXIMATE, ACTUAL MAY VARY.



Miles & Barr

155-157 Northdown Road, Cliftonville - CT9 2QY

01843 231 222

cliftonville@milesandbarr.co.uk

www.milesandbarr.co.uk/

We have not carried out a structural survey, appliances & services are untested, dimensions are approximate, floor plans are not to scale. Legal advice should be taken to verify fixtures/fittings/planning/alterations and/or lease details before proceeding. On acceptance of an offer, purchasers must undertake ID checks; this is a legal requirement in accordance with Anti Money Laundering Regulations. We use a specialist company, Lifetime Legal and the cost is £60 inc VAT per purchase, paid directly to Lifetime Legal, once offer agreed and prior to issuing sales memorandum. This Charge is non-refundable For Referral Fee Disclosure visit: milesandbarr.co.uk/referral-fee-disclosure