



*Symonds
Taylor*

3 Park Avenue, Gosforth

Newcastle Upon Tyne

Guide Price £165,000



3 Park Avenue

Gosforth, Newcastle Upon Tyne

Park Avenue is an ideally situated two bedroom first floor apartment in Gosforth. This spacious apartment is within walking distance to Gosforth High Street, Regent Centre and has easy access into Newcastle City Centre. Additionally, there are local shops on Great North Road.

The accommodation comprises:

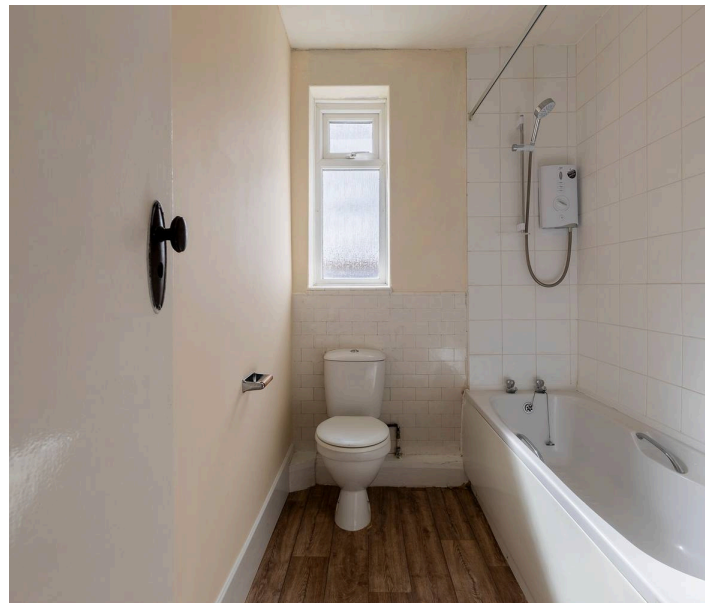
Ground floor: Entrance vestibule.

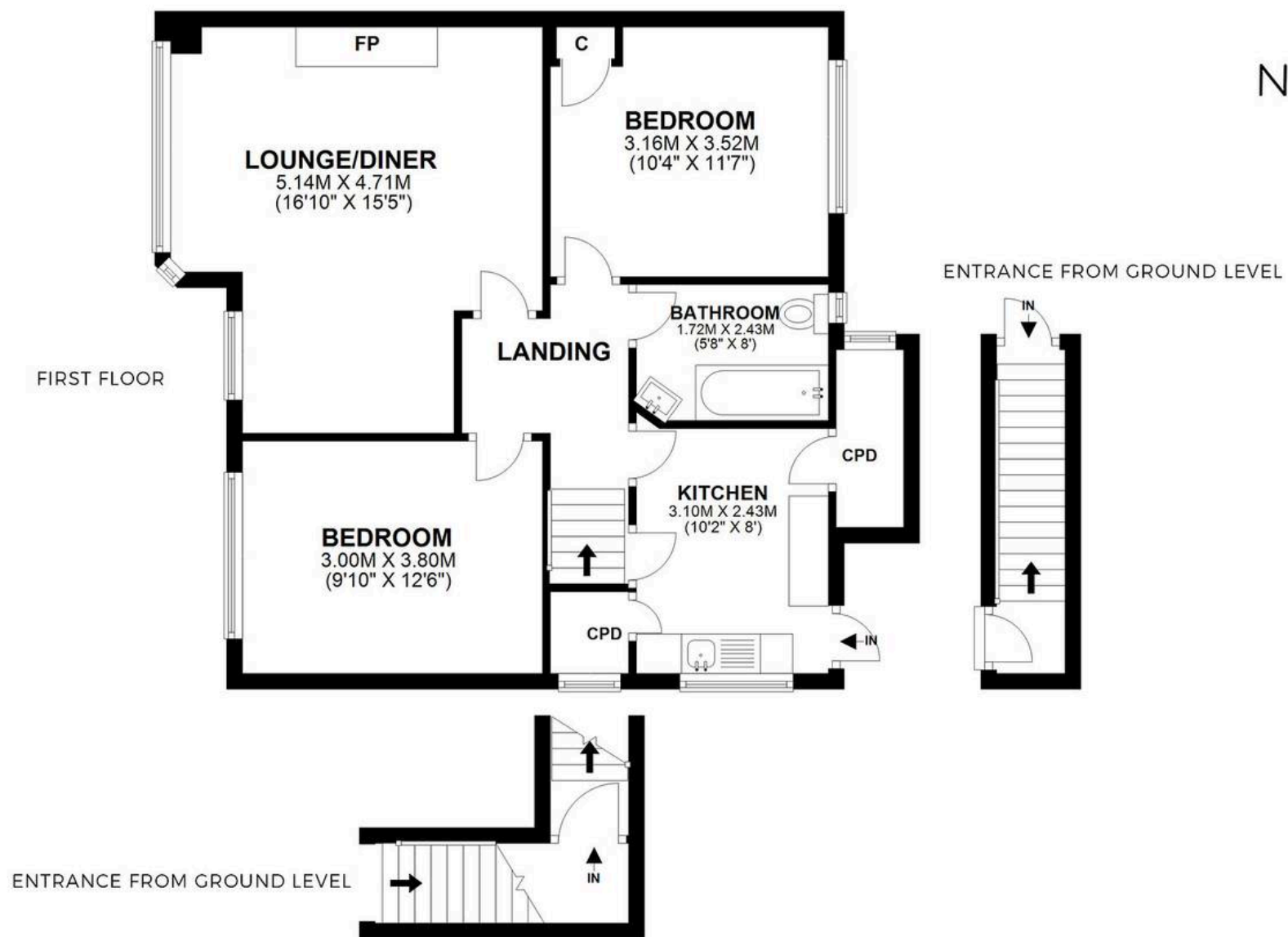
First floor: Landing, sitting room/dining room, kitchen, principal bedroom, bedroom two, bathroom/wc.

Outside: Side garden.

Council Tax band: A

Tenure: Leasehold





3 PARK AVENUE, GOSFORTH, NE3 2HJ

APPROXIMATE GROSS INTERNAL AREA 67 SQ M 723 SQ FT - NOT TO SCALE - FOR ILLUSTRATIVE PURPOSES ONLY
All measurements and fixtures including doors and windows are approximate and should be independently verified.

*Symonds
Taylor*



Symonds Taylor

101 St. Georges Terrace, Jesmond - NE2 2DN

0191 338 9999 • hello@symondstaylor.co.uk • www.symondstaylor.co.uk

All descriptions, plans or references to condition are given in good faith only. Whilst every endeavour is made to ensure accuracy, please check with us on any points of especial importance to you.